

1 SPP1

Homo sapiens secreted phosphoprotein 1 (SPP1). The protein encoded by this gene is involved in the attachment of osteoclasts to the mineralized bone matrix and also in regulation of IFN-gamma and IL-12.

Among human cells this gene is strongly expressed in Marburg virus infected cells only. It is well expressed in bat cells, also with peak expression in Marburg virus infected cells.



Figure 1: IGV Genome Browser screenshot of gene SPP1.

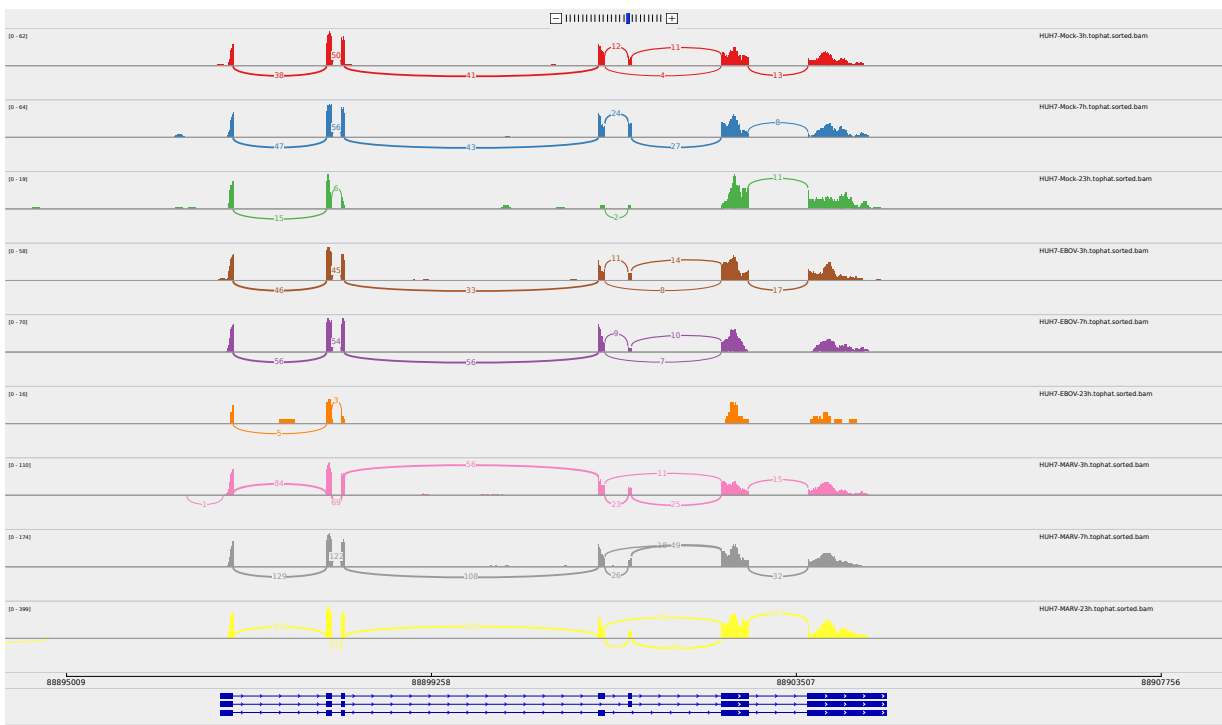


Figure 2: Sashimi plot of gene SPP1.

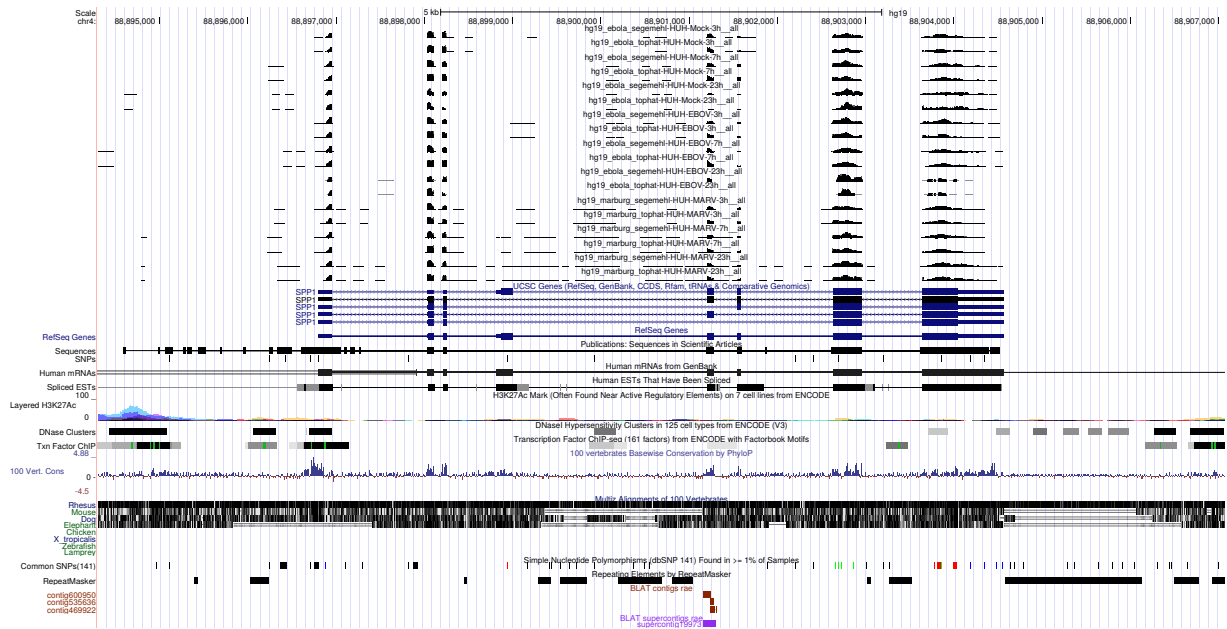


Figure 3: UCSC Genome Browser screenshot of gene SPP1.