

1 TFCP2L1

The transcription factor CP2-like 1 (TFCP2L1) gene is not expressed. Only in the probe of 23 h Marburg infected cells in human, a few reads mapped to the 5' part of the gene.

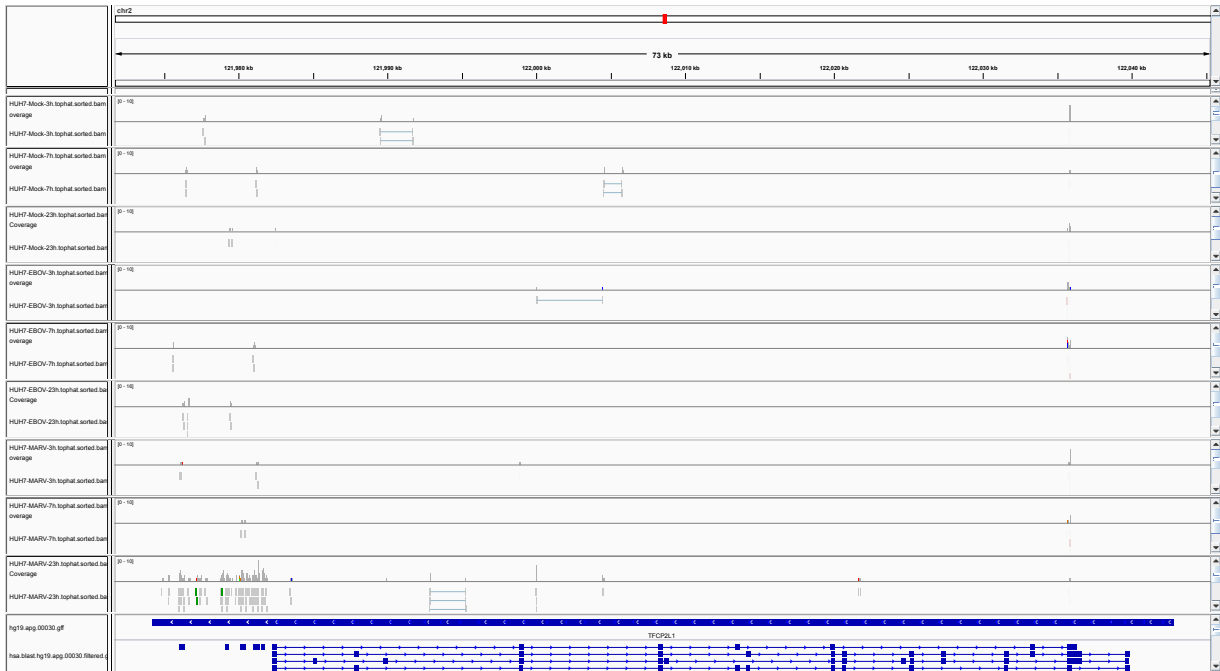


Figure 1: IGV Genome Browser screenshot of gene TFCP2L1.

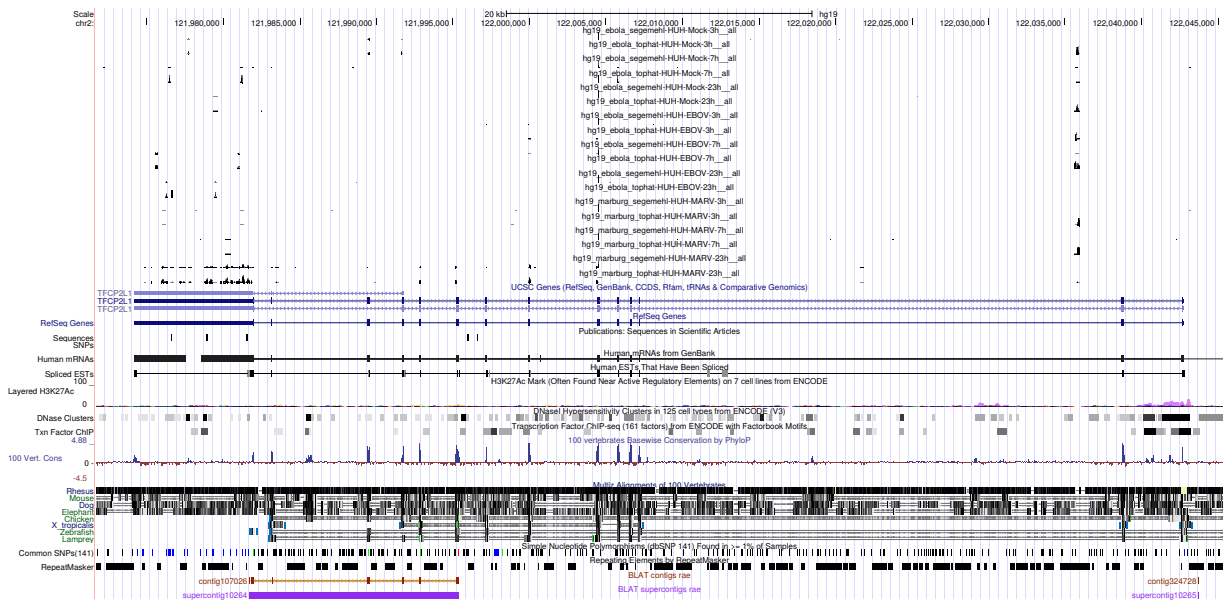


Figure 2: UCSC Genome Browser screenshot of gene TFCP2L1.