

1 RRAD

RRAD (Ras-related associated with diabetes) is a protein-coding gene. Diseases associated with RRAD include insulin resistance. GO annotations related to this gene include calmodulin binding and GTP binding. An important paralog of this gene is REM1.

The overall expression of this gene is low.

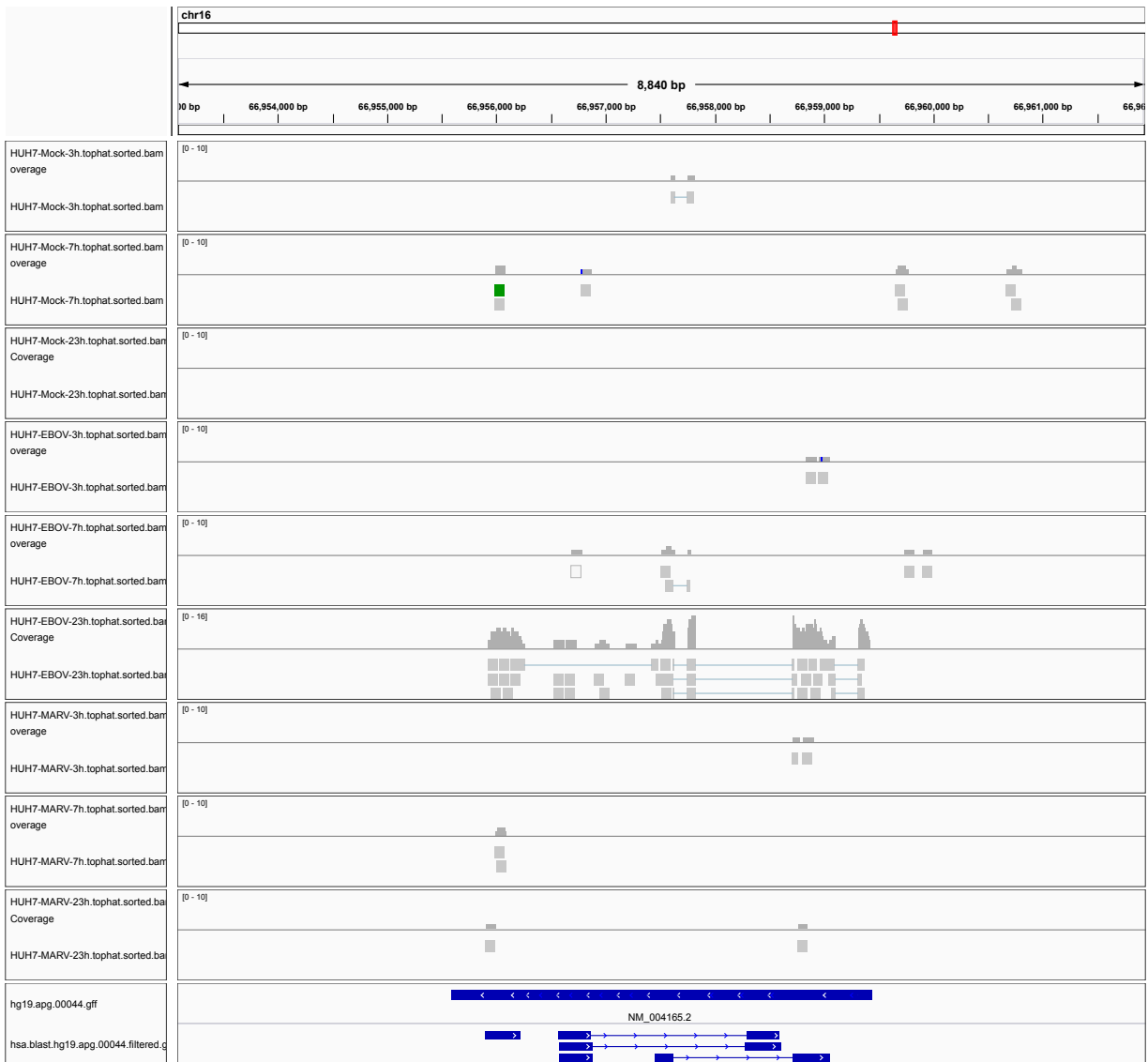


Figure 1: IGV Genome Browser screenshot of gene RRAD.

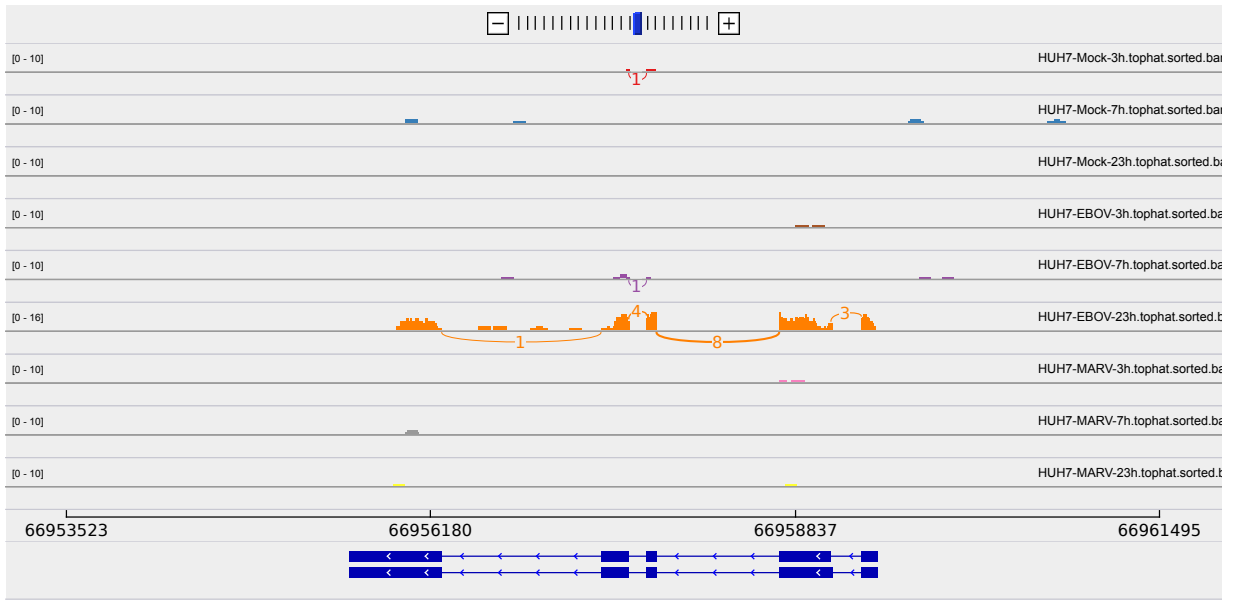


Figure 2: Sashimi plot of gene RRAD.

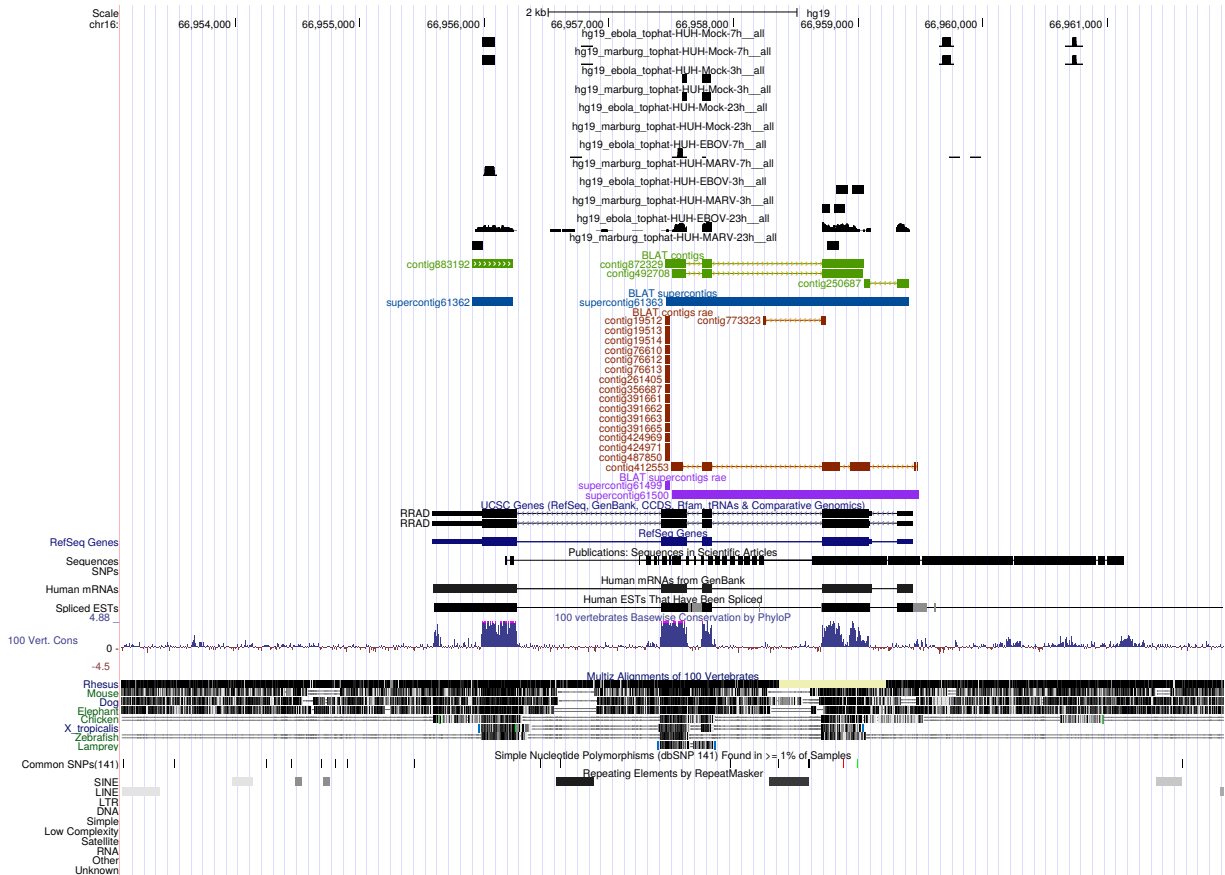


Figure 3: UCSC Genome Browser screenshot of gene RRAD.