

1 LOC441728

The LOC441728 is only slightly expressed in Ebola infected human cells after 23 h. In bat cells we find a slightly expression in all probes.

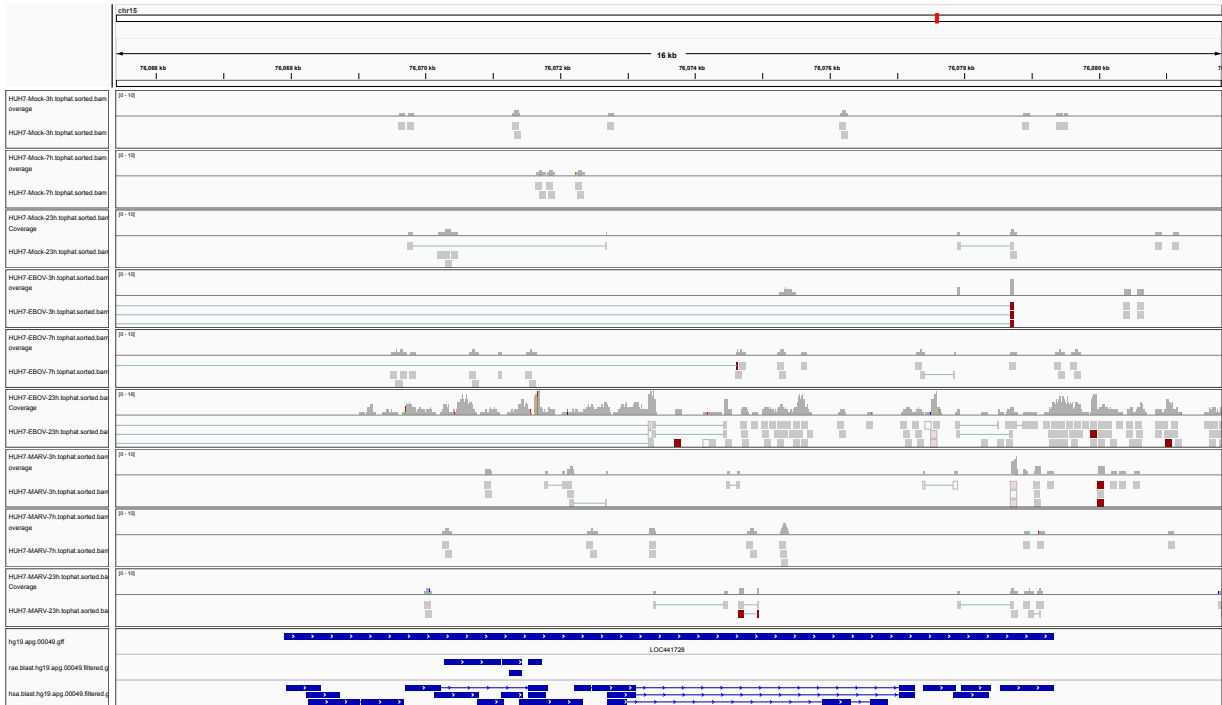


Figure 1: IGV Genome Browser screenshot of gene LOC441728.

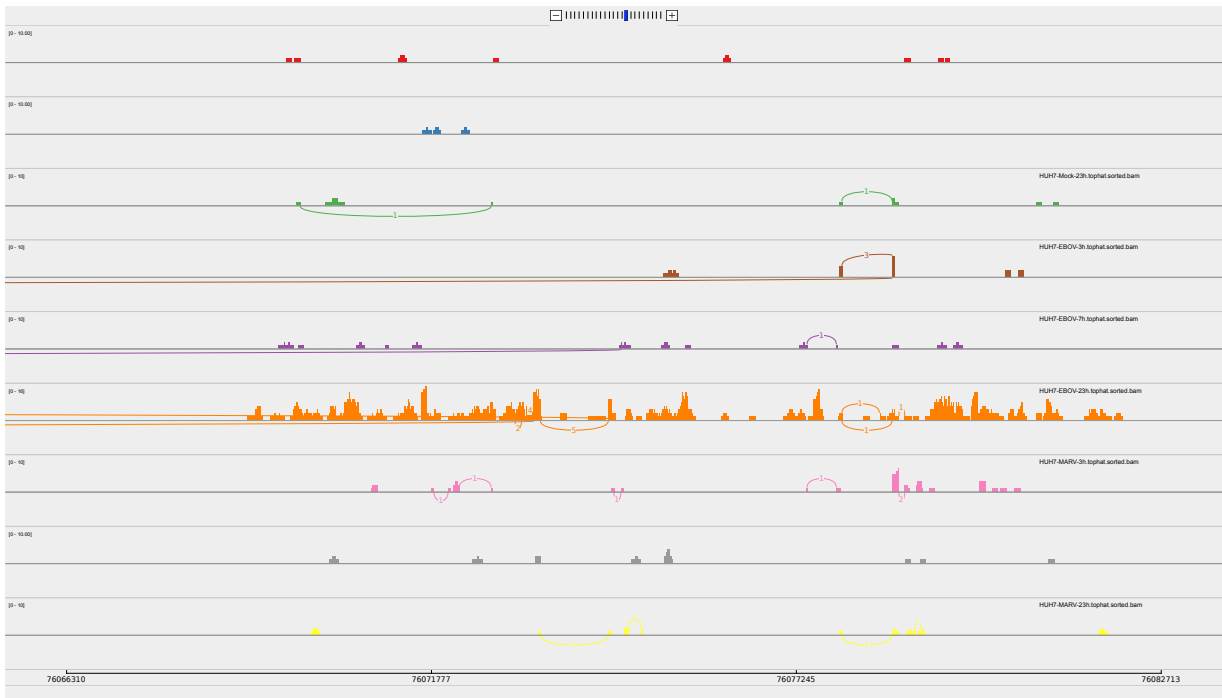


Figure 2: Sashimi plot of gene LOC441728.

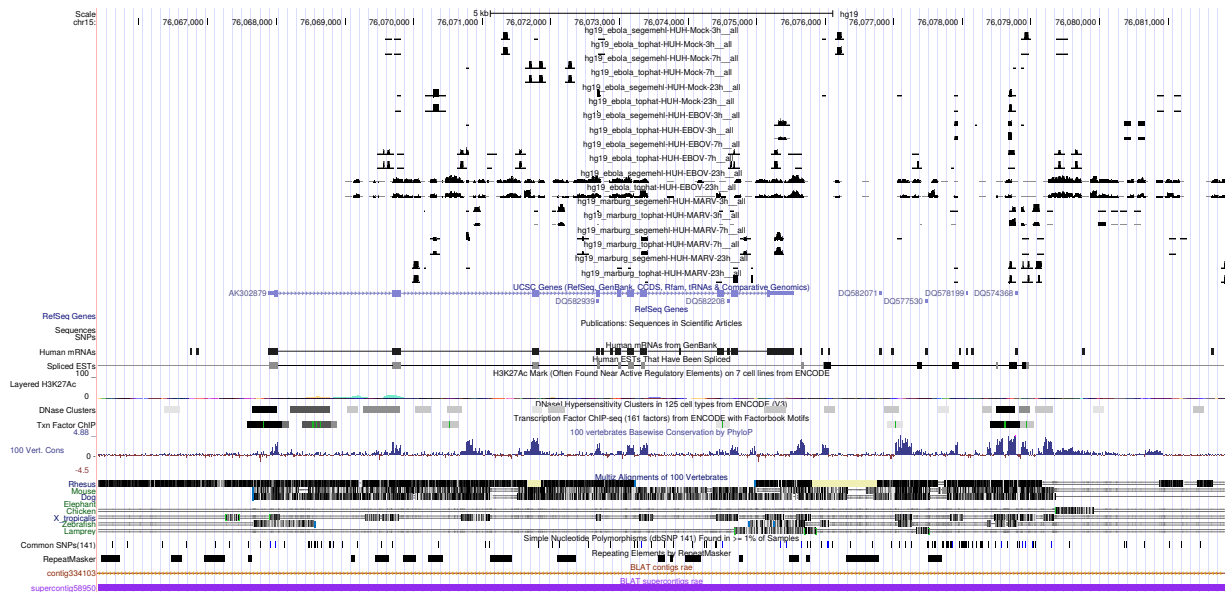


Figure 3: UCSC Genome Browser screenshot of gene LOC441728.