

1 LZTS1

This gene encodes a tumor suppressor protein that is ubiquitously expressed in normal tissues. In uveal melanomas, expression of this protein is silenced in rapidly metastasizing and metastatic tumor cells but has normal expression in slowly metastasizing or nonmetastasizing tumor cells. This protein may have a role in cell-cycle control by interacting with the Cdk1/cyclinB1 complex.

Expression level is rapidly decreased in Ebola infected human after 23 h.



Figure 1: IGV Genome Browser screenshot of gene LZTS1.

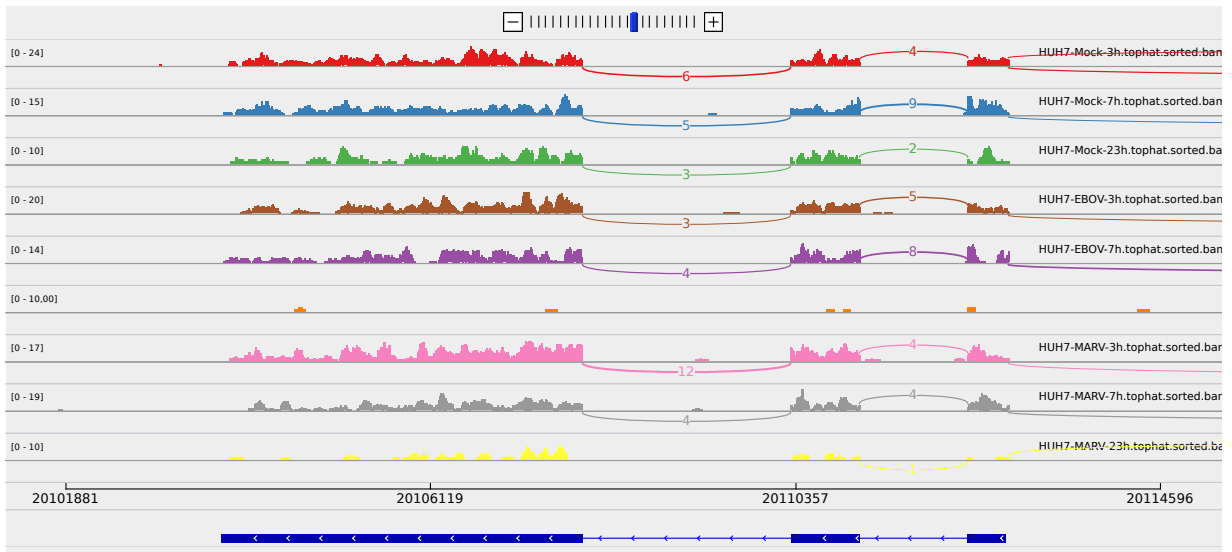


Figure 2: Sashimi plot of gene LZTS1.

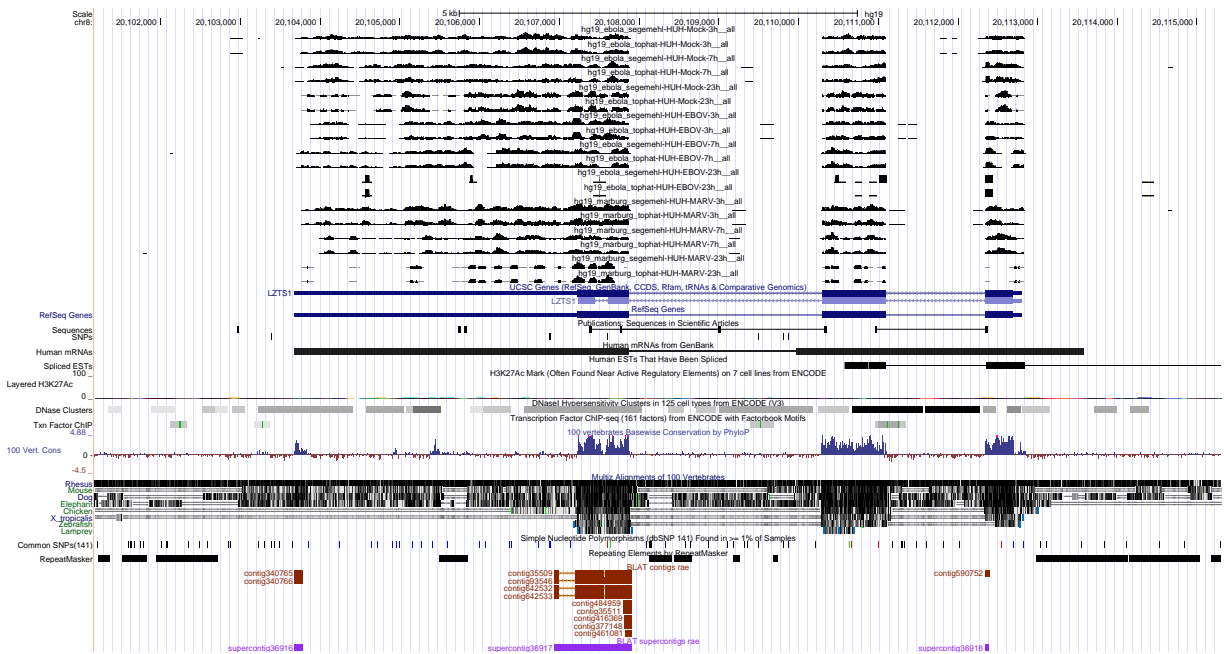


Figure 3: UCSC Genome Browser screenshot of gene LZTS1.