

# 1 CXCL6

CXCL6 encodes for chemokine (C-X-C motif) ligand 6, which is a small cytokine belonging to the CXC chemokine family that is also known as granulocyte chemotactic protein 2 (GCP-2). It is a chemoattractant for neutrophilic granulocytes and it elicits its chemotactic effects by interacting with the chemokine receptors CXCR1 and CXCR2. It is located in a cluster with other CXC chemokine genes.

It is constantly but low expressed in all investigated human probes and no homolog was found in bat.



Figure 1: IGV Genome Browser screenshot of gene CXCL6.

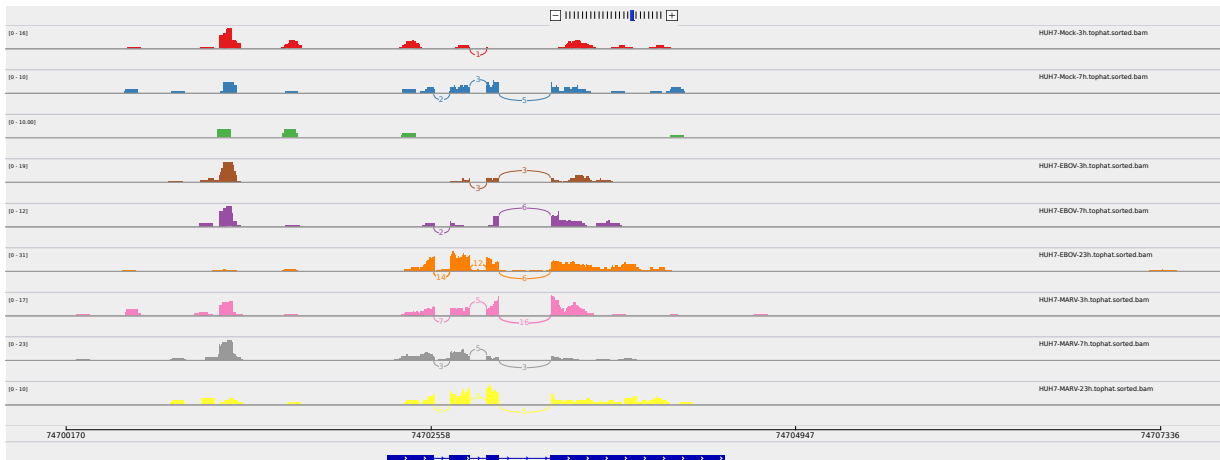


Figure 2: Sashimi plot of gene CXCL6.

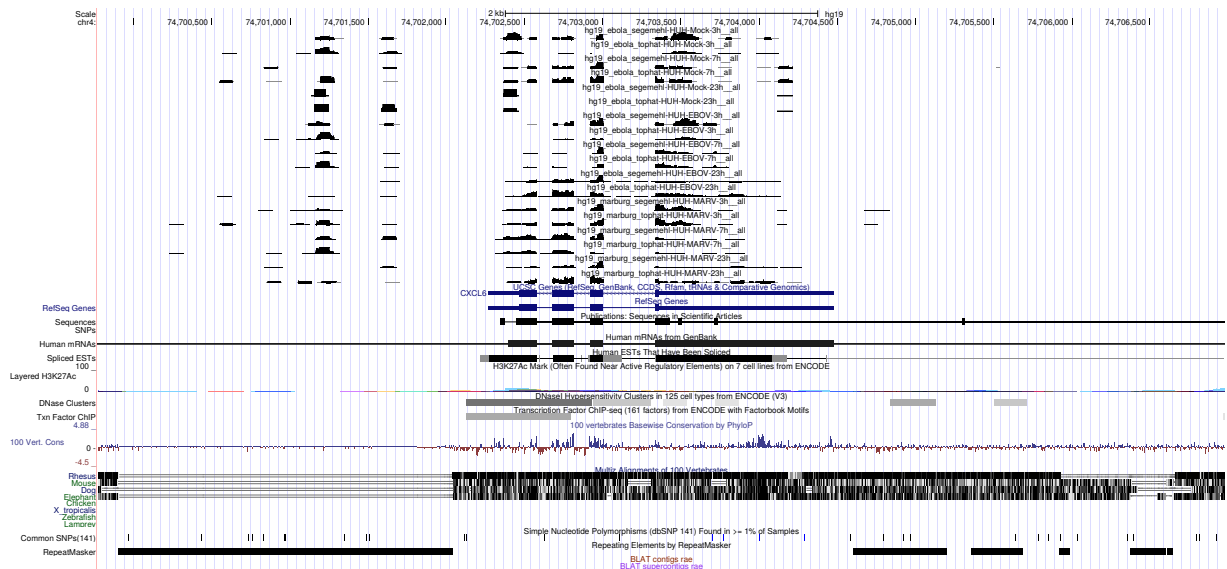


Figure 3: UCSC Genome Browser screenshot of gene CXCL6.



Figure 4: IGV Genome Browser screenshot of transcription upstream of gene CXCL6.