

1 BHLHE41

This gene encodes a basic helix-loop-helix protein expressed in various tissues. The encoded protein can interact with ARNTL or compete for E-box binding sites in the promoter of PER1 and repress CLOCK/ARNTL's transactivation of PER1. This gene is believed to be involved in the control of circadian rhythm and cell differentiation. Defects in this gene are associated with the short sleep phenotype.

This gene is slightly expressed in Ebola and Marburg infected cells in human after 23 h. The other probes show no expression. In bat all probes are slightly expressed.



Figure 1: IGV Genome Browser screenshot of gene BHLHE41.

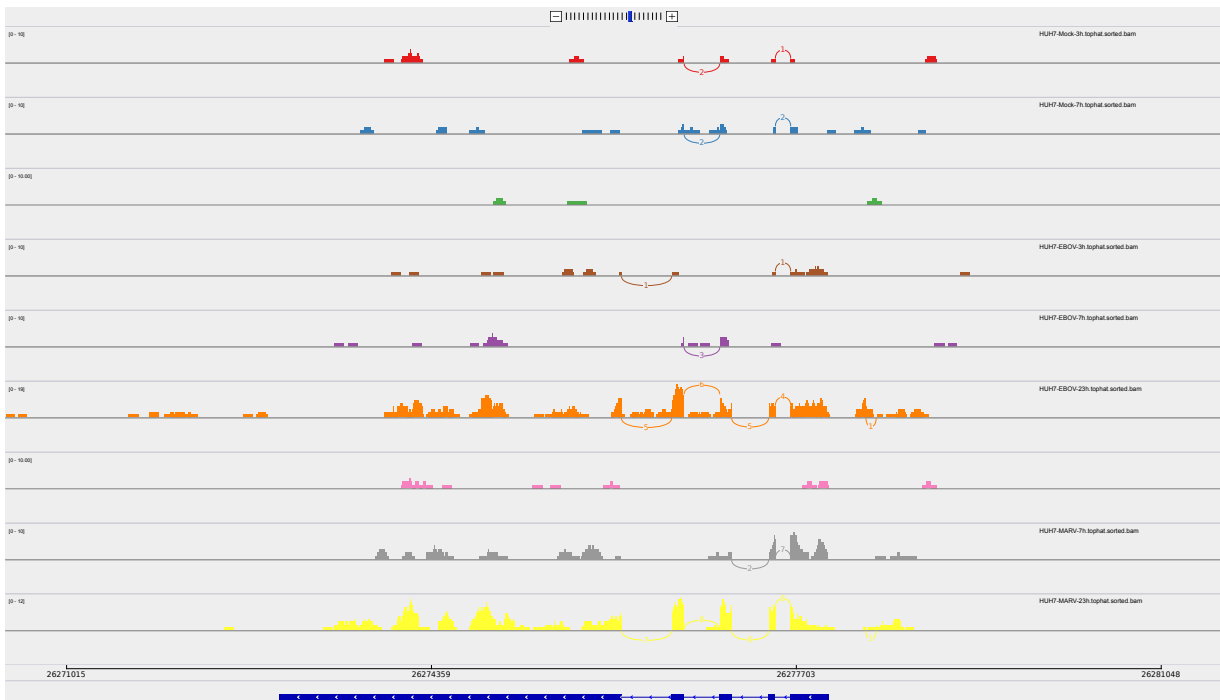


Figure 2: Sashimi plot of gene BHLHE41.

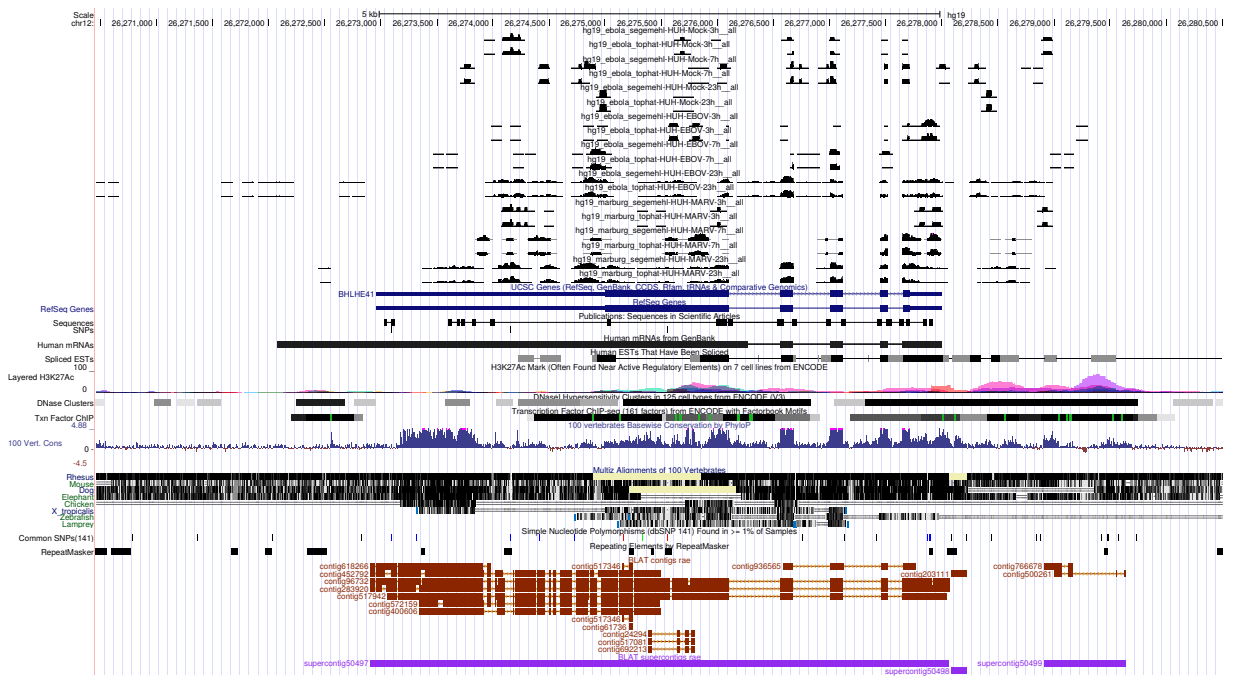


Figure 3: UCSC Genome Browser screenshot of gene BHLHE41.