

# 1 CIDEC

This gene encodes a member of the cell death-inducing DNA fragmentation factor-like effector family. Members of this family play important roles in apoptosis. The encoded protein promotes lipid droplet formation in adipocytes and may mediate adipocyte apoptosis. This gene is regulated by insulin and its expression is positively correlated with insulin sensitivity. Mutations in this gene may contribute to insulin resistant diabetes. A pseudogene of this gene is located on the short arm of chromosome 3. Alternatively spliced transcript variants that encode different isoforms have been observed for this gene.

It is expressed very weak in human under all investigated conditions and shows a slight upregulation after 23 h of Marburg virus infection.



Figure 1: IGV Genome Browser screenshot of gene CIDEC.

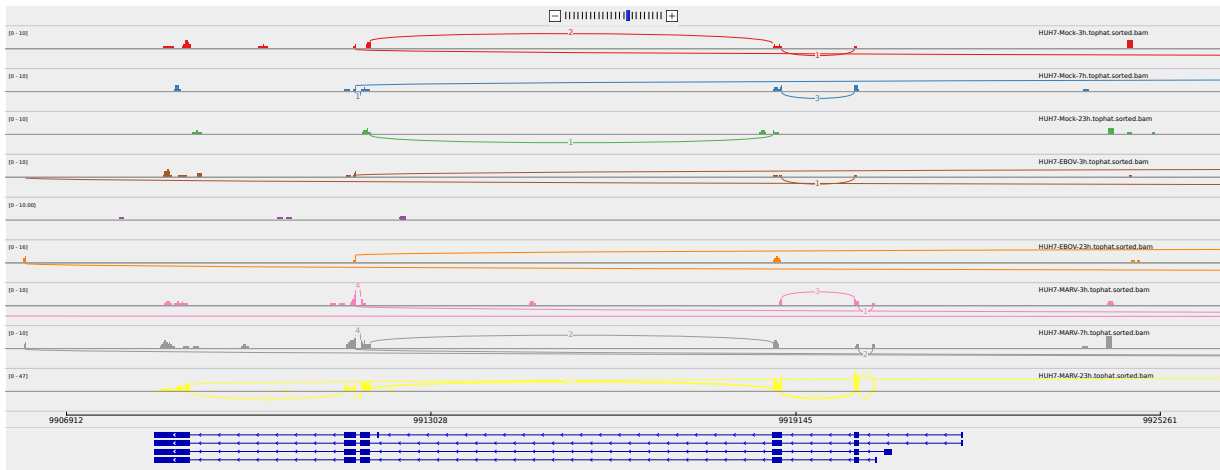


Figure 2: Sashimi plot of gene CIDEC.

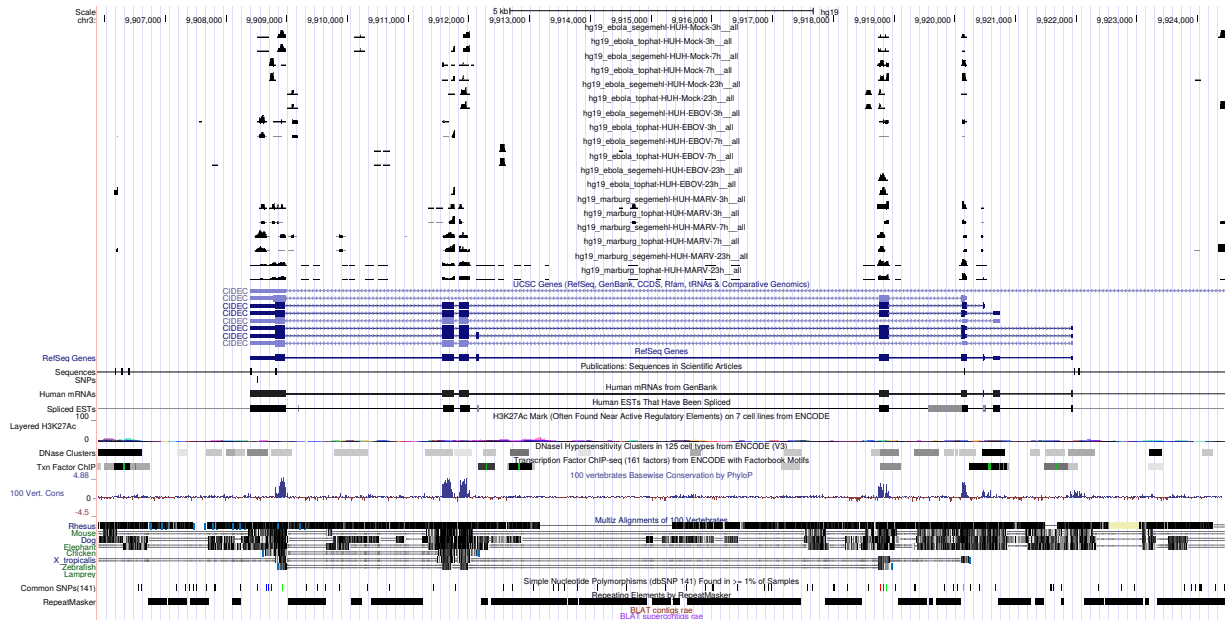


Figure 3: UCSC Genome Browser screenshot of gene CIDEA.