

# 1 EDN1

The protein encoded by this gene is proteolytically processed to release a secreted peptide termed endothelin 1. This peptide is a potent vasoconstrictor and is produced by vascular endothelial cells. Endothelin 1 also can affect the central nervous system. Two transcript variants encoding different isoforms have been found for this gene.

Eyeballing the expression data does not confirm any remarkable change in expression pattern due to Ebola or Marburg virus infection.



Figure 1: IGV Genome Browser screenshot of gene EDN1.

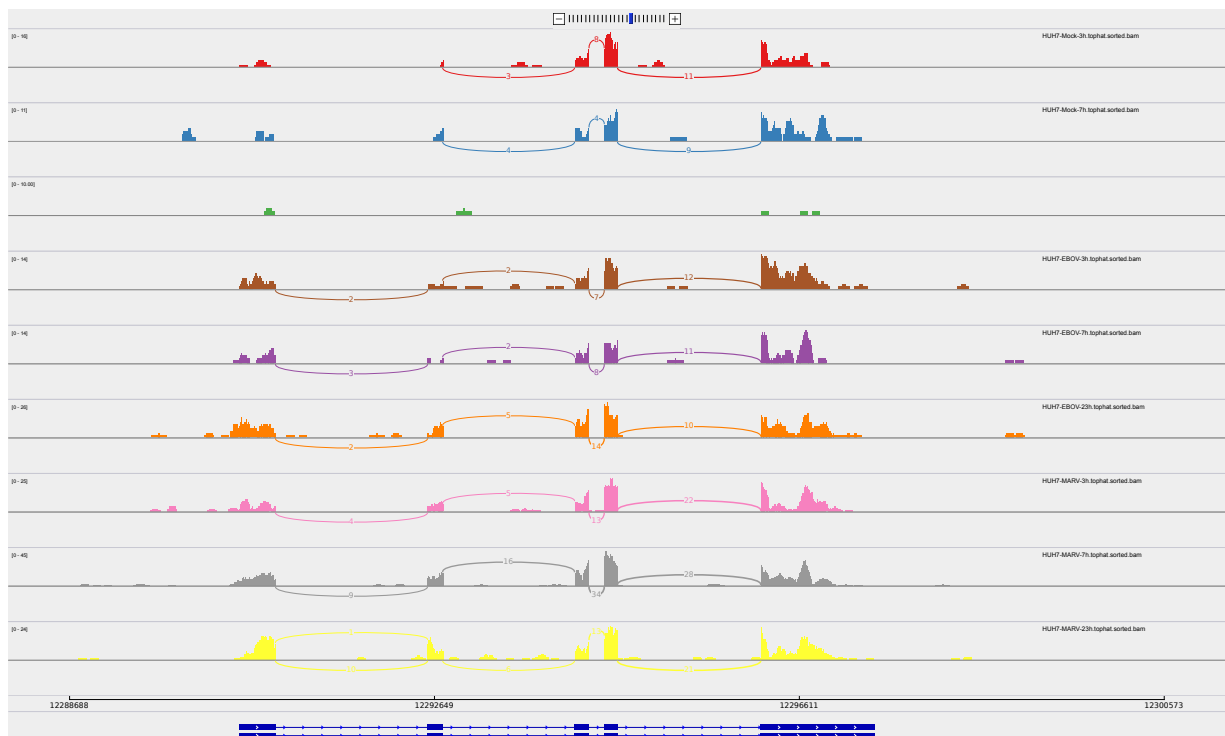


Figure 2: Sashimi plot of gene EDN1.

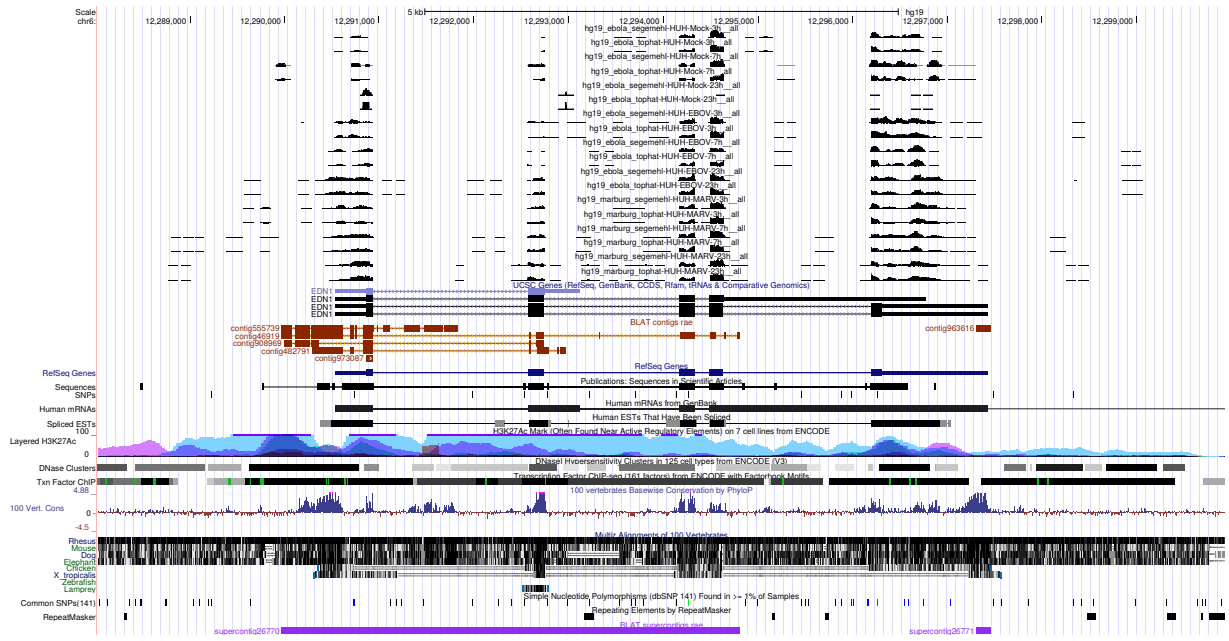


Figure 3: UCSC Genome Browser screenshot of gene EDN1.