

1 EGR1

The protein encoded by this gene belongs to the EGR family of C2H2-type zinc-finger proteins. It is a nuclear protein and functions as a transcriptional regulator. The products of target genes it activates are required for differentiation and mitogenesis. Studies suggest this is a cancer suppressor gene.

This gene is expressed in all probes. In the bat probes the expression is 10 fold higher. The gene overlaps with LOC100652898.



Figure 1: IGV Genome Browser screenshot of gene EGR1.

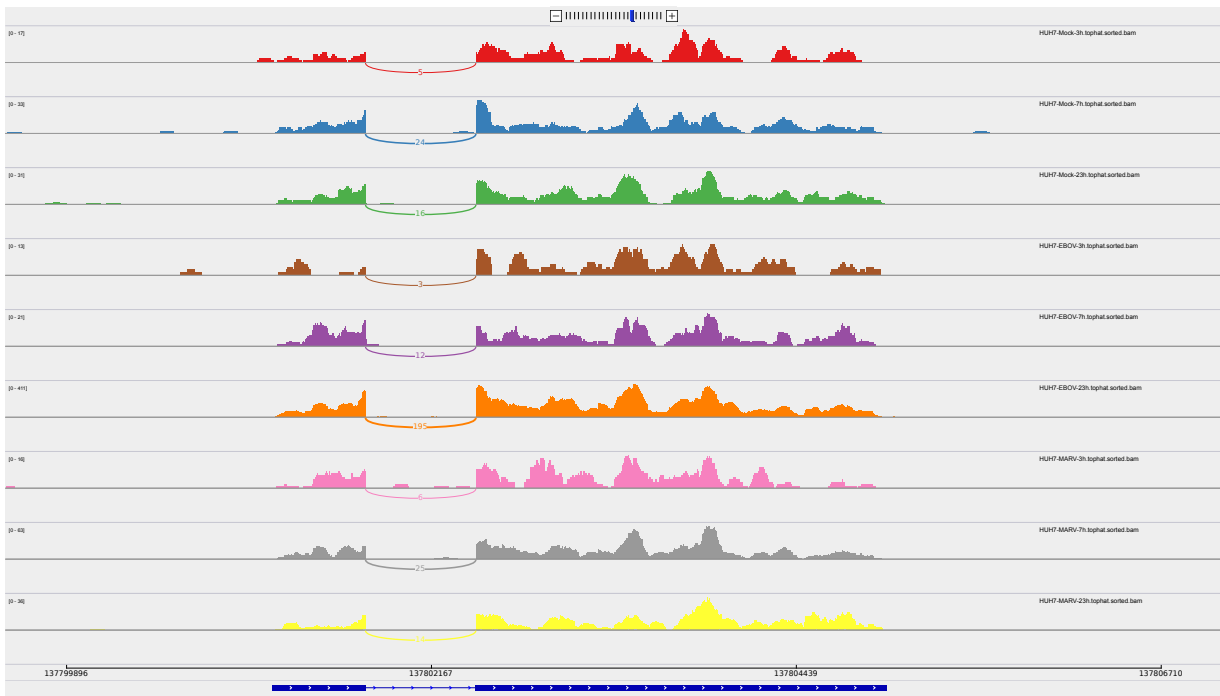


Figure 2: Sashimi plot of gene EGR1.

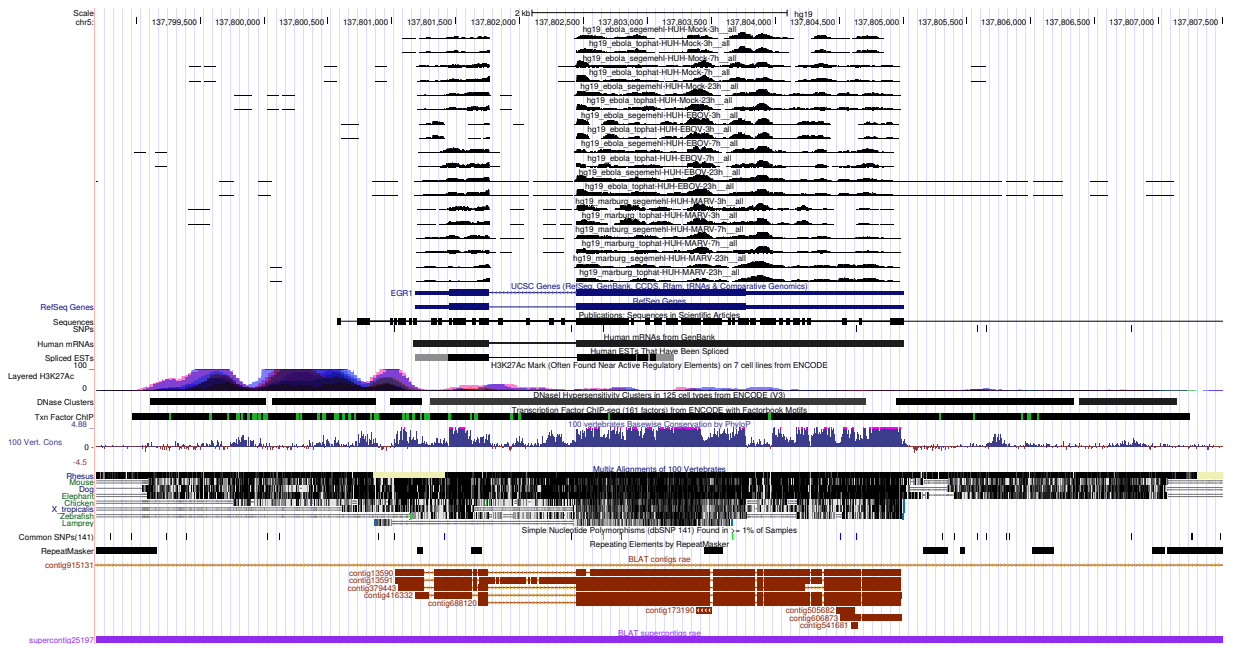


Figure 3: UCSC Genome Browser screenshot of gene EGR1.

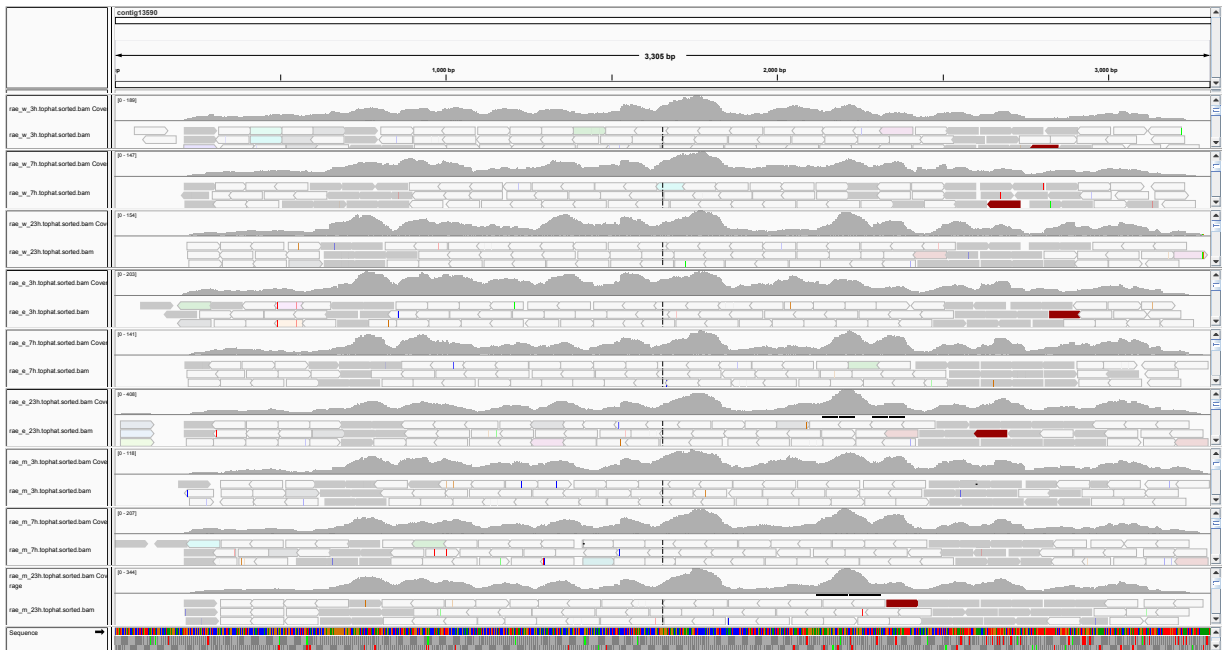


Figure 4: Blast hit of EGR1 in bat