

1 HMGCS2

The protein encoded by this gene belongs to the HMG-CoA synthase family. It is a mitochondrial enzyme that catalyzes the first reaction of ketogenesis, a metabolic pathway that provides lipid-derived energy for various organs during times of carbohydrate deprivation, such as fasting. Mutations in this gene are associated with HMG-CoA synthase deficiency.

The gene is equally expressed in all human probes. We found no homolog in bat.

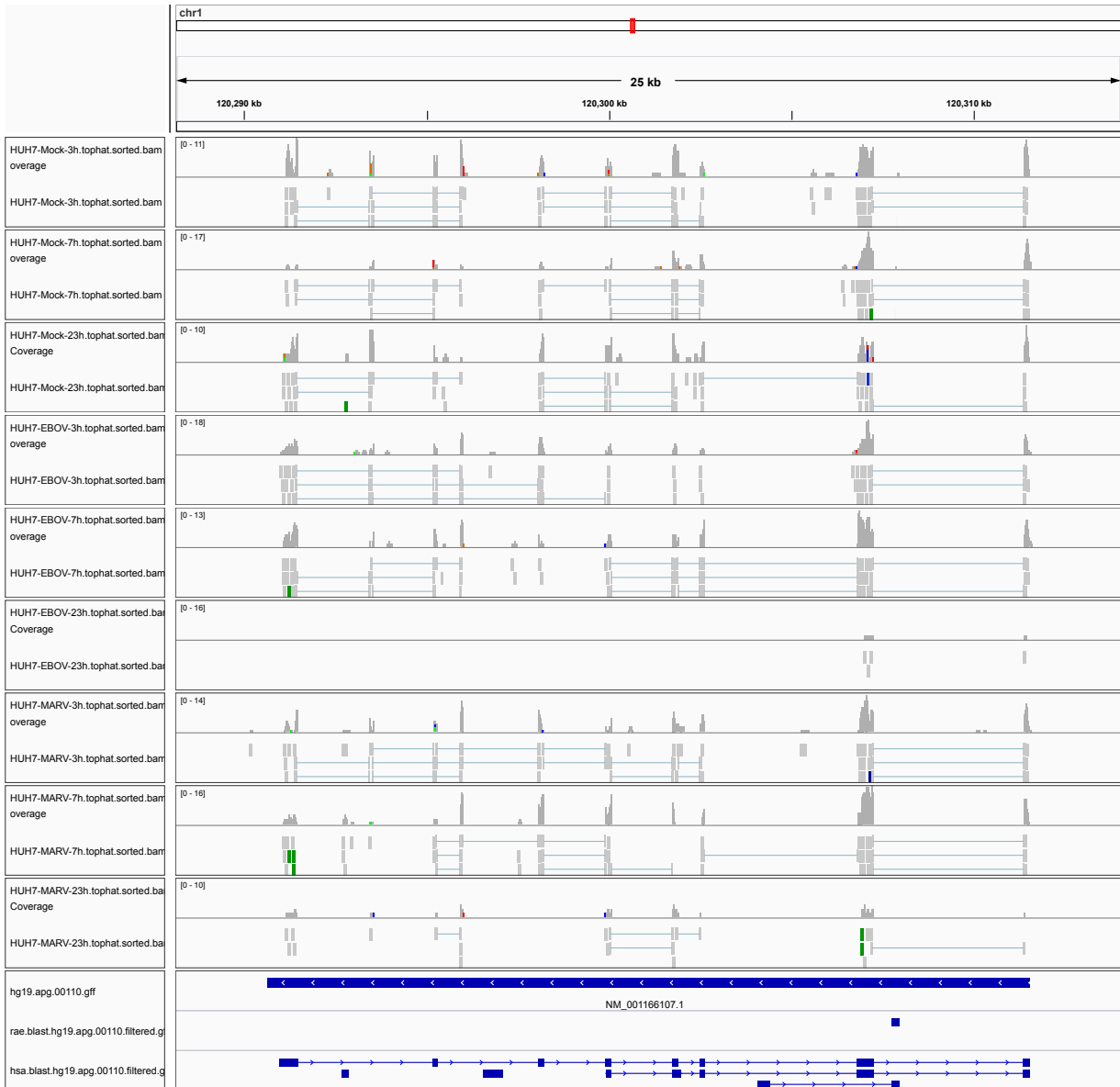


Figure 1: IGV Genome Browser screenshot of gene HMGCS2.

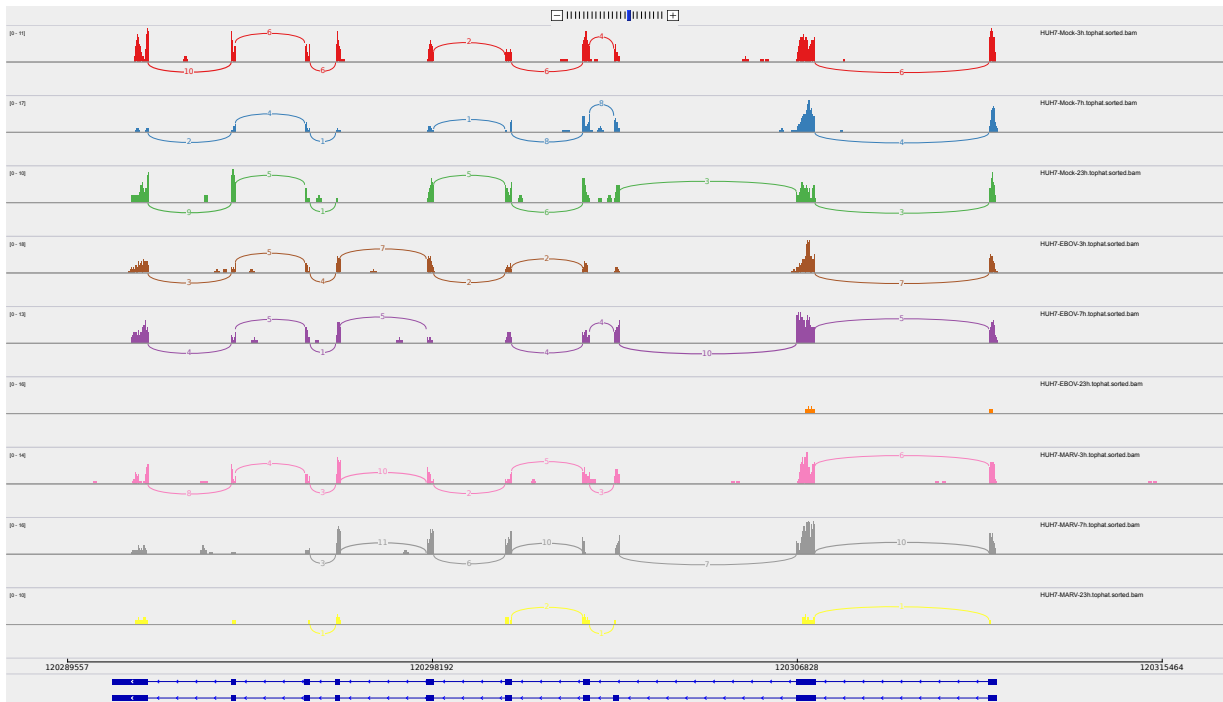


Figure 2: Sashimi plot of gene HMGCS2.

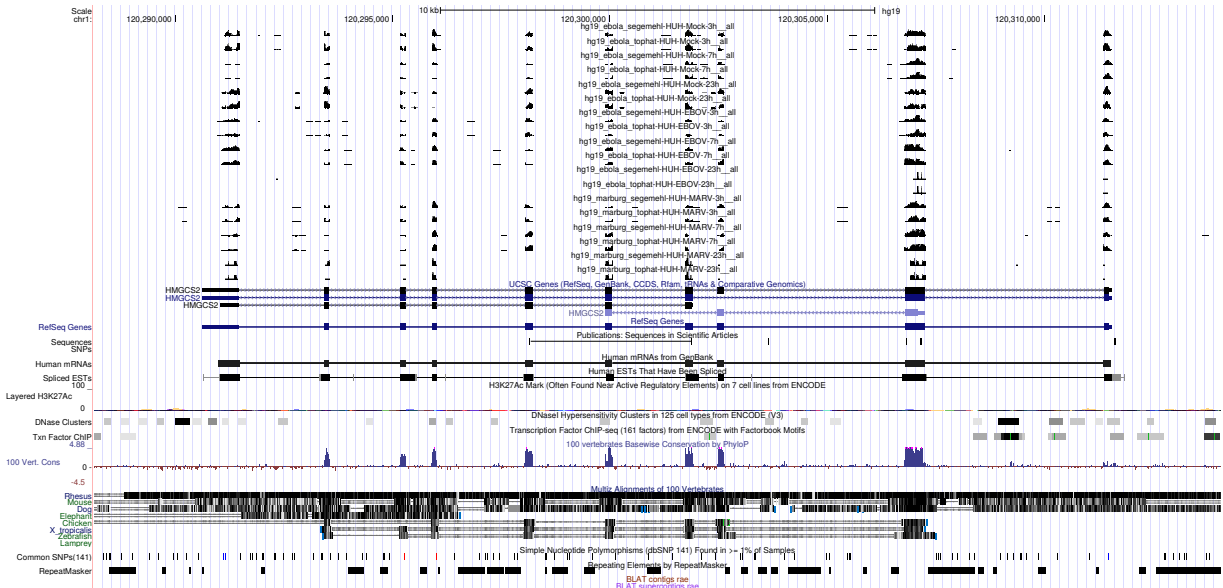


Figure 3: UCSC Genome Browser screenshot of gene HMGCS2.