

1 GEM

Gem was reported to be a potential regulatory protein, possibly participating in receptor-mediated signal transduction at the plasma membrane.

Nothing special for this gene both in human and bat. With very low expression.

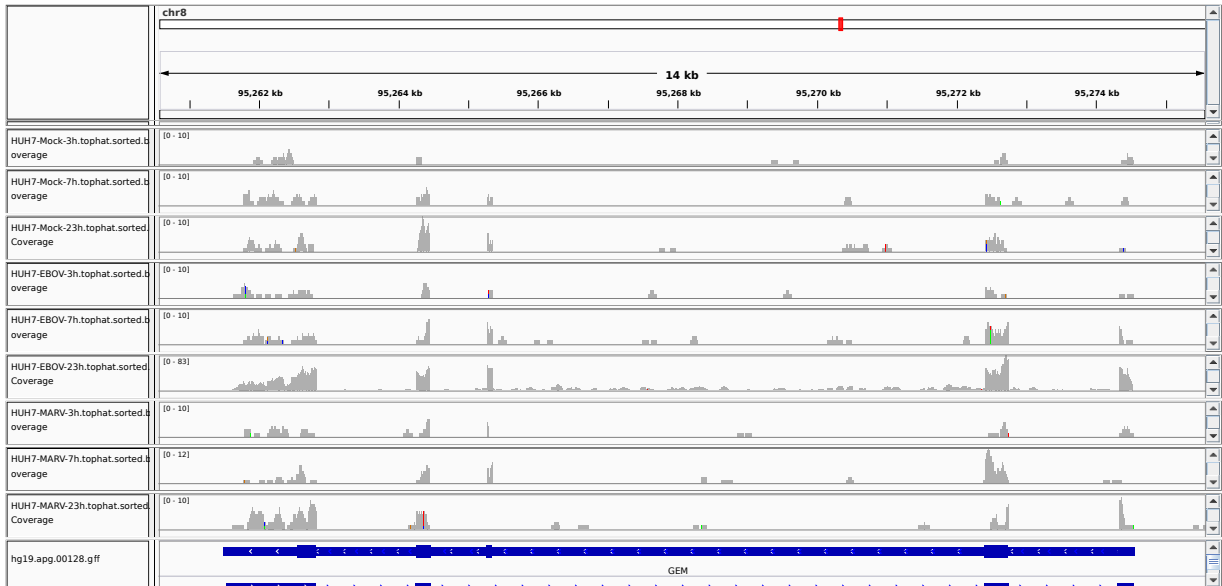


Figure 1: IGV Genome Browser screenshot of gene GEM.

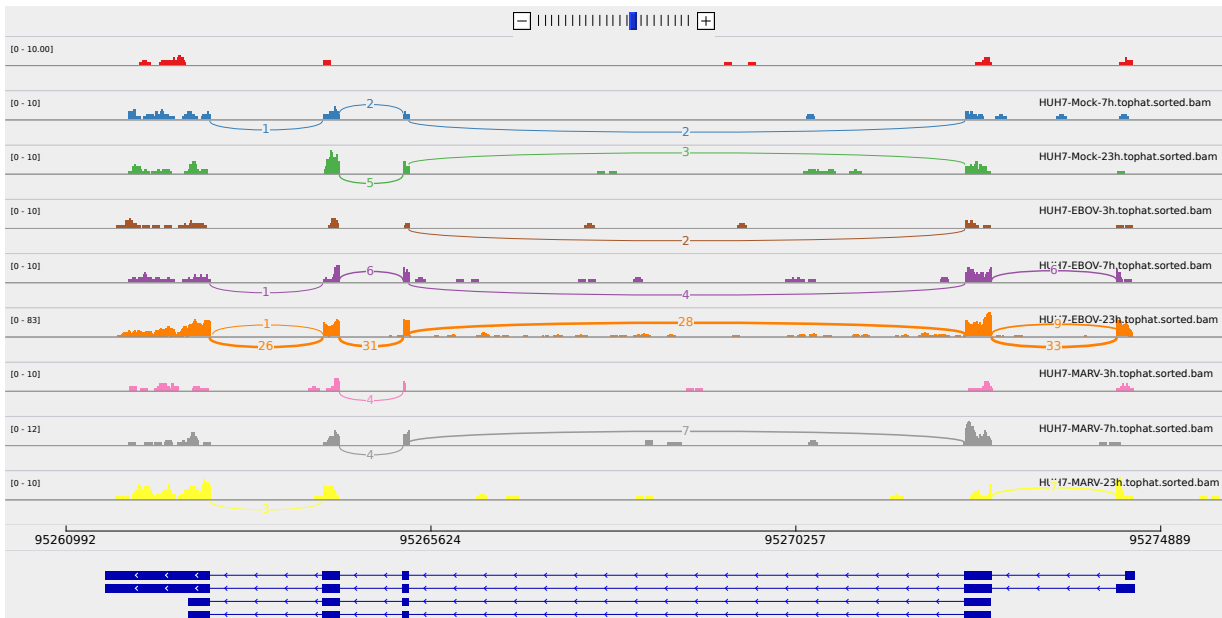


Figure 2: Sashimi plot of gene GEM.

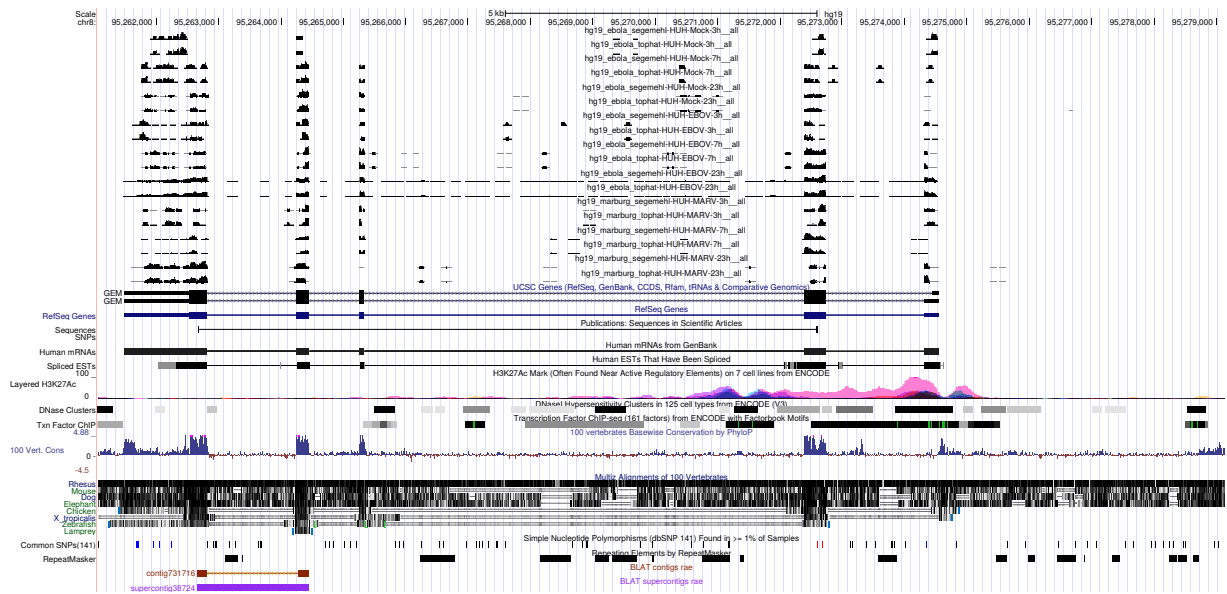


Figure 3: UCSC Genome Browser screenshot of gene GEM.