

# 1 MAFK

The developmentally regulated expression of the globin genes depends on upstream regulatory elements termed locus control regions (LCRs). LCRs are associated with powerful enhancer activity that is mediated by the transcription factor NFE2 (nuclear factor erythroid-2). NFE2 recognition sites are also present in the gene promoters of 2 heme biosynthetic enzymes, porphobilinogen deaminase.

MAFK is very strongly and exclusively induced in the human EBOV infected cells 23 hours after infection. Beside, the alternative first exon in the human annotation, seems to be missing in the bat assembly data.

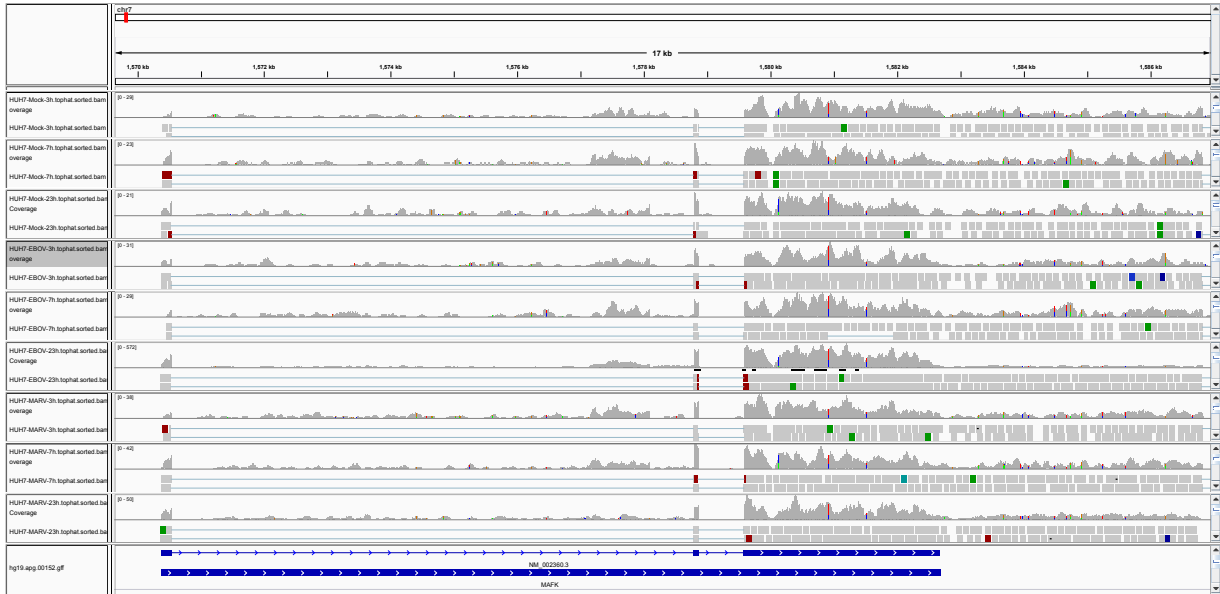


Figure 1: IGV Genome Browser screenshot of gene MAFK.

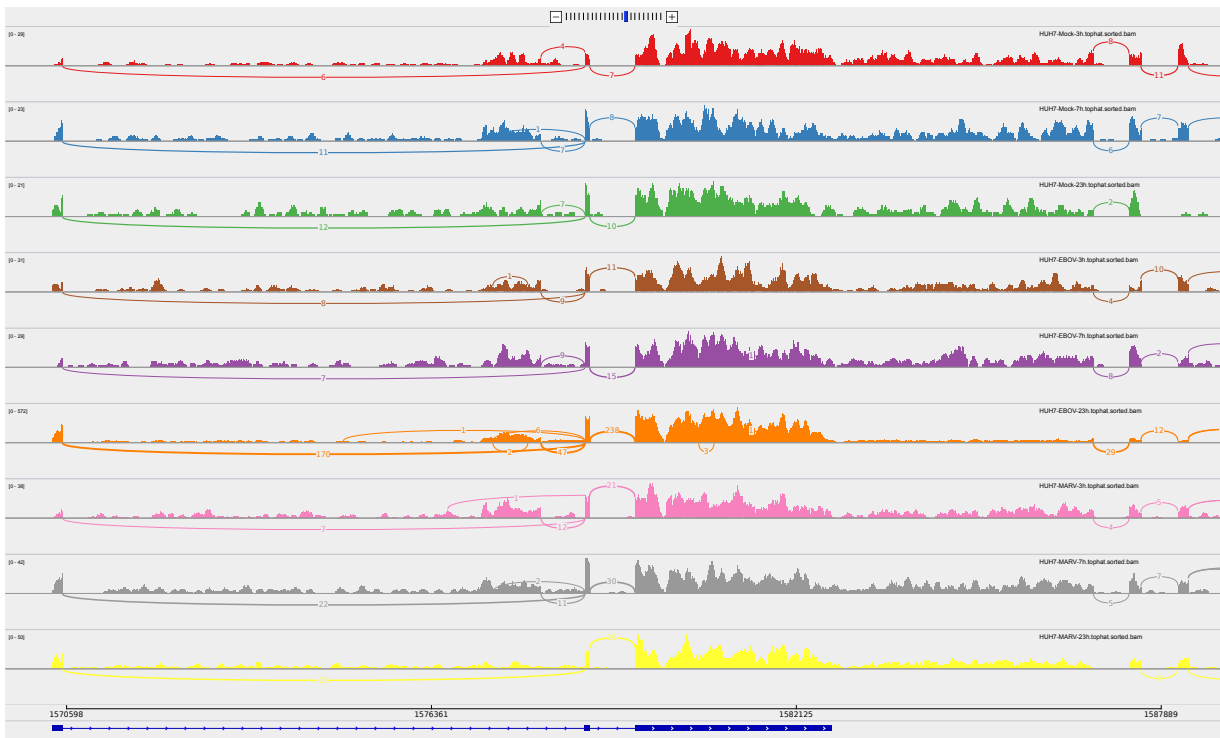


Figure 2: Sashimi plot of gene MAFK.

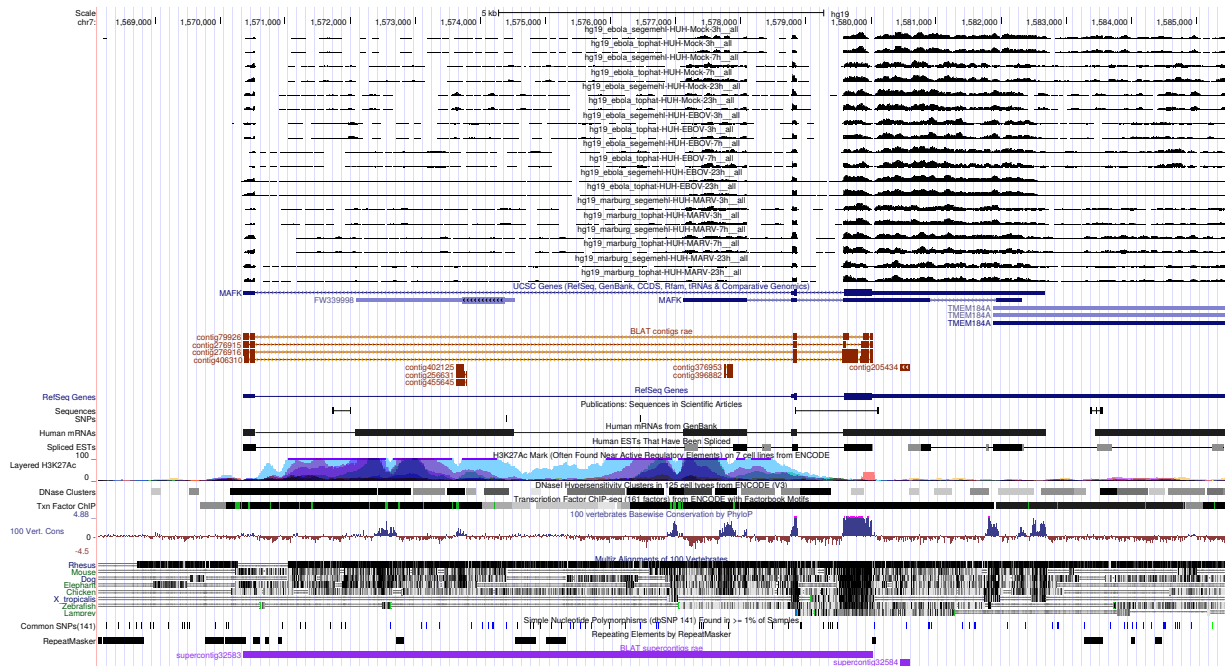


Figure 3: UCSC Genome Browser screenshot of gene MAFK.