

# 1 DKK1

This gene encodes a protein that is a member of the dickkopf family. It is a secreted protein with two cysteine rich regions and is involved in embryonic development through its inhibition of the WNT signaling pathway. Elevated levels of DKK1 in bone marrow plasma and peripheral blood is associated with the presence of osteolytic bone lesions in patients with multiple myeloma.

This gene is more than 25 fold downregulated in human 23 h after Ebola infection, while for Marburg it is only 2 fold downregulated.



Figure 1: IGV Genome Browser screenshot of gene DKK1.

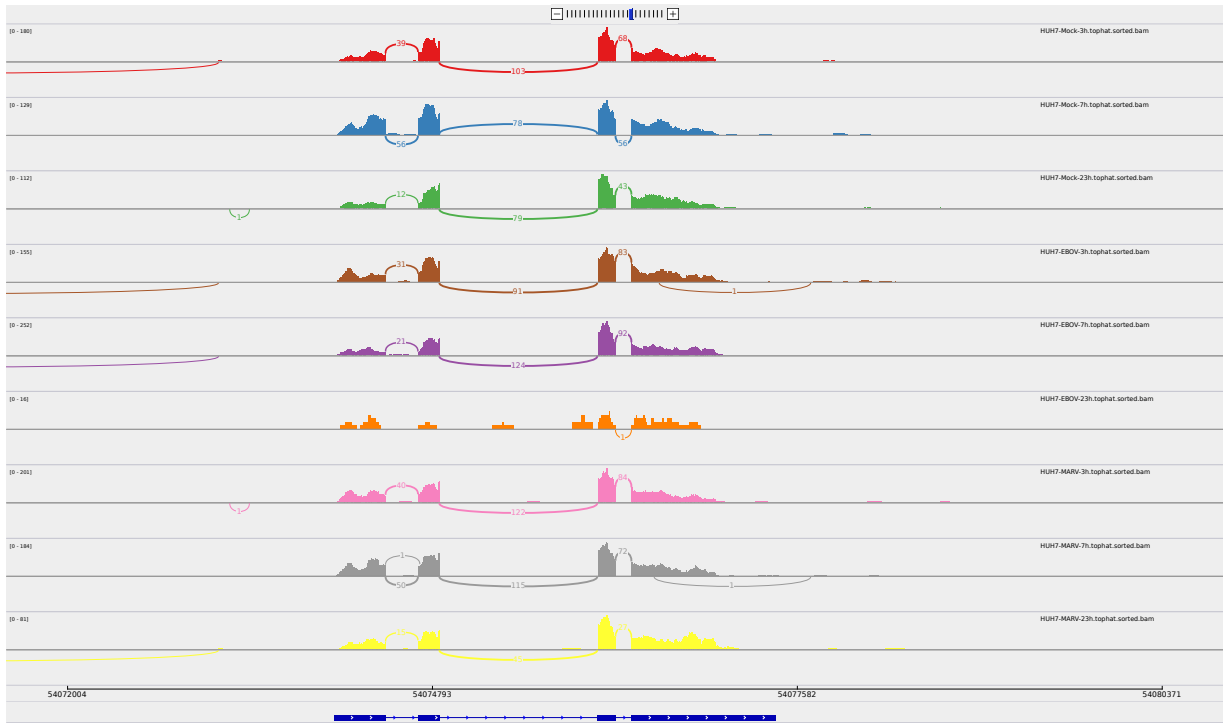


Figure 2: Sashimi plot of gene DKK1.

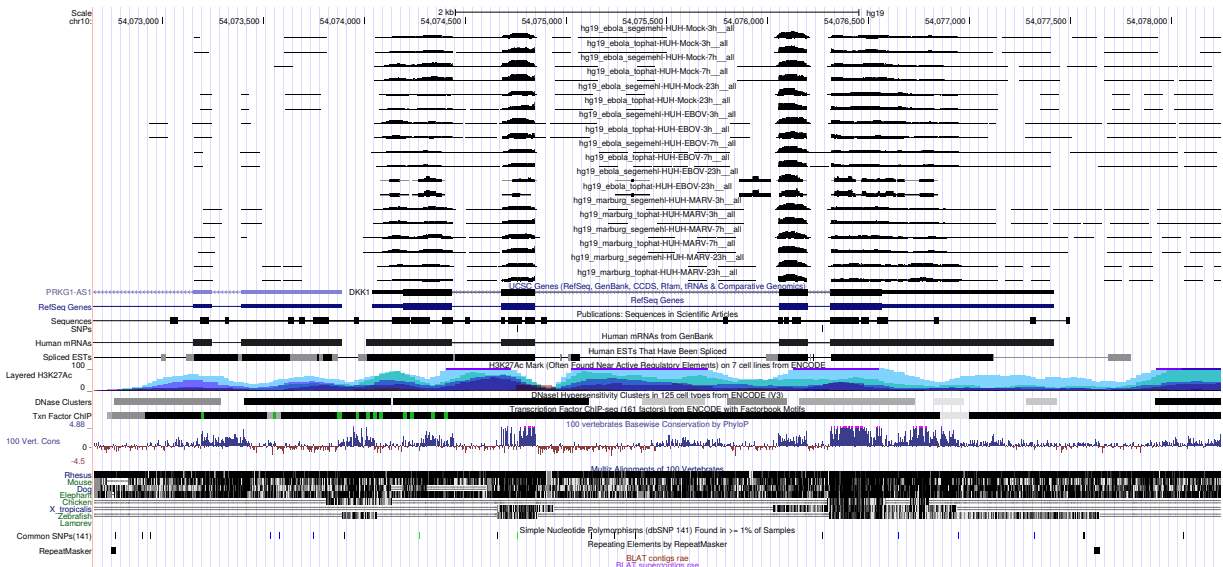


Figure 3: UCSC Genome Browser screenshot of gene DKK1.