

# 1 PLK2

Homo sapiens polo-like kinase 2 (PLK2)

This gene is weakly expressed in bat cells. It is very weakly expressed in human cells with most expression in 23h Ebola infected cells.

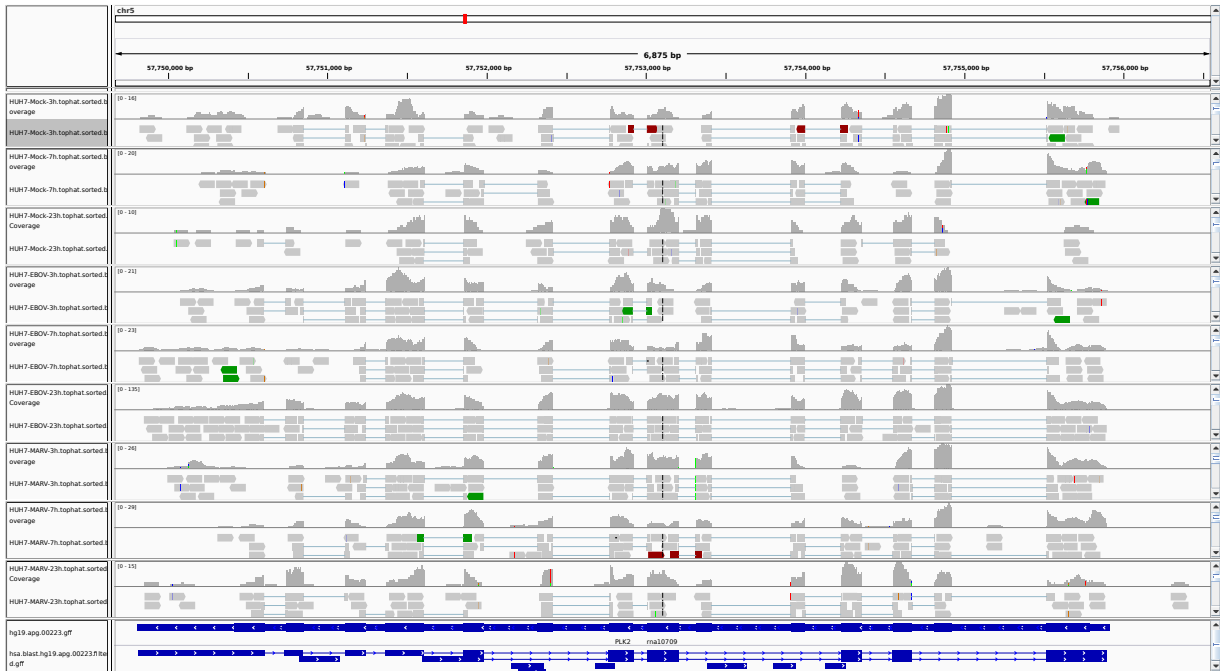


Figure 1: IGV Genome Browser screenshot of gene PLK2.

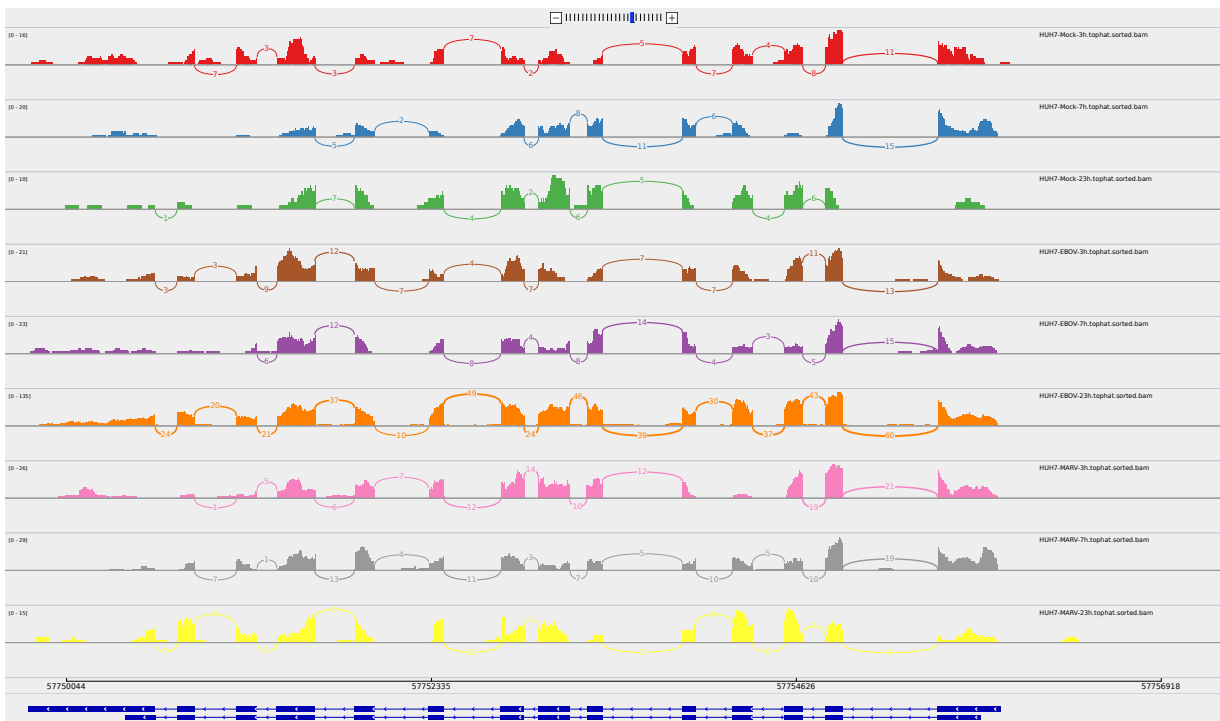


Figure 2: Sashimi plot of gene PLK2.

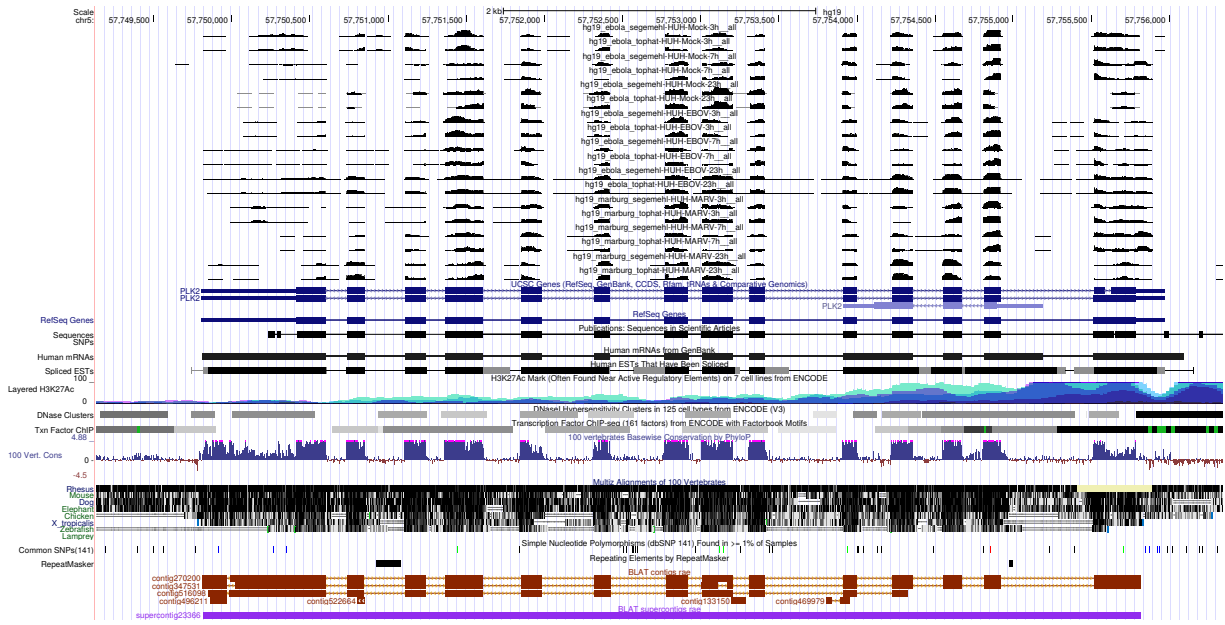


Figure 3: UCSC Genome Browser screenshot of gene PLK2.