

1 SLC40A1

The protein encoded by this gene is a cell membrane protein that may be involved in iron export from duodenal epithelial cells. Defects in this gene are a cause of hemochromatosis type 4 (HFE4).

It is strongly downregulated in human 23h after Ebola virus infection and slightly upregulated after Marburg infection. In bat it is constantly expressed but at a distinct lower level.

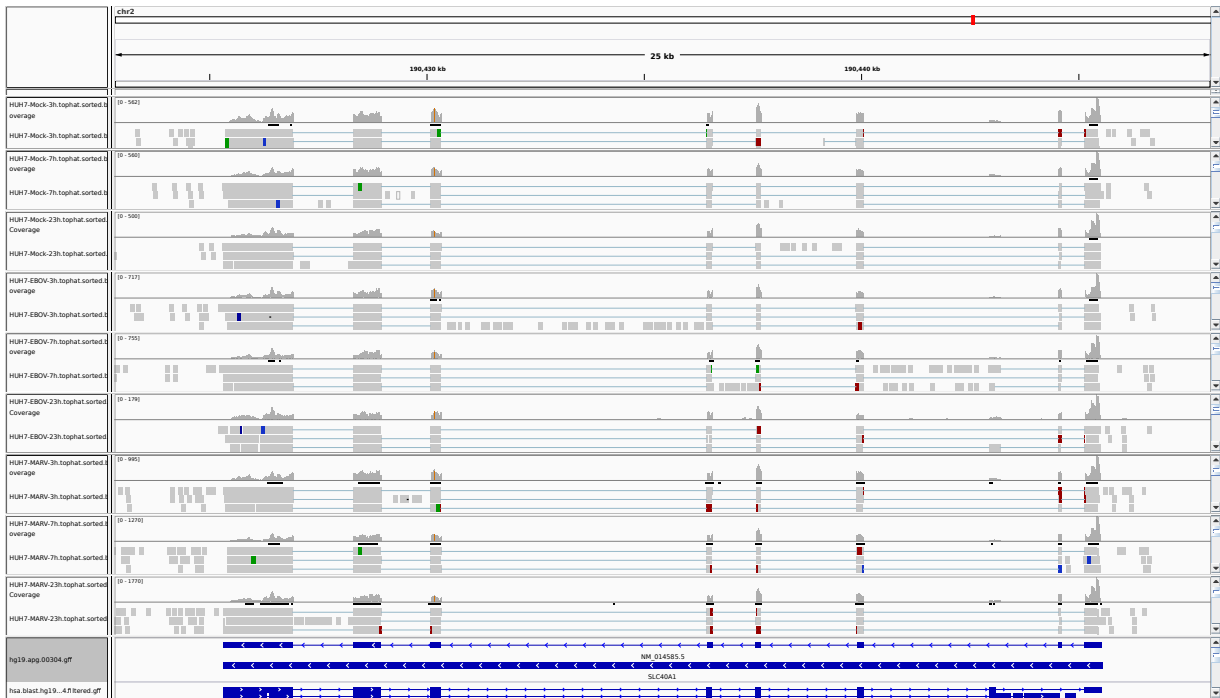


Figure 1: IGV Genome Browser screenshot of gene SLC40A1.

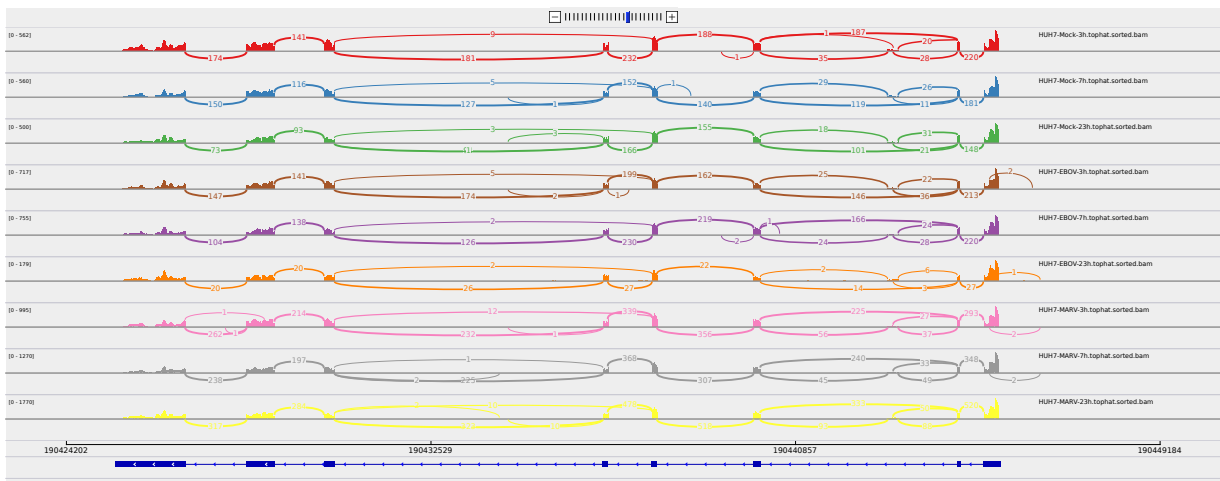


Figure 2: Sashimi plot of gene SLC40A1.

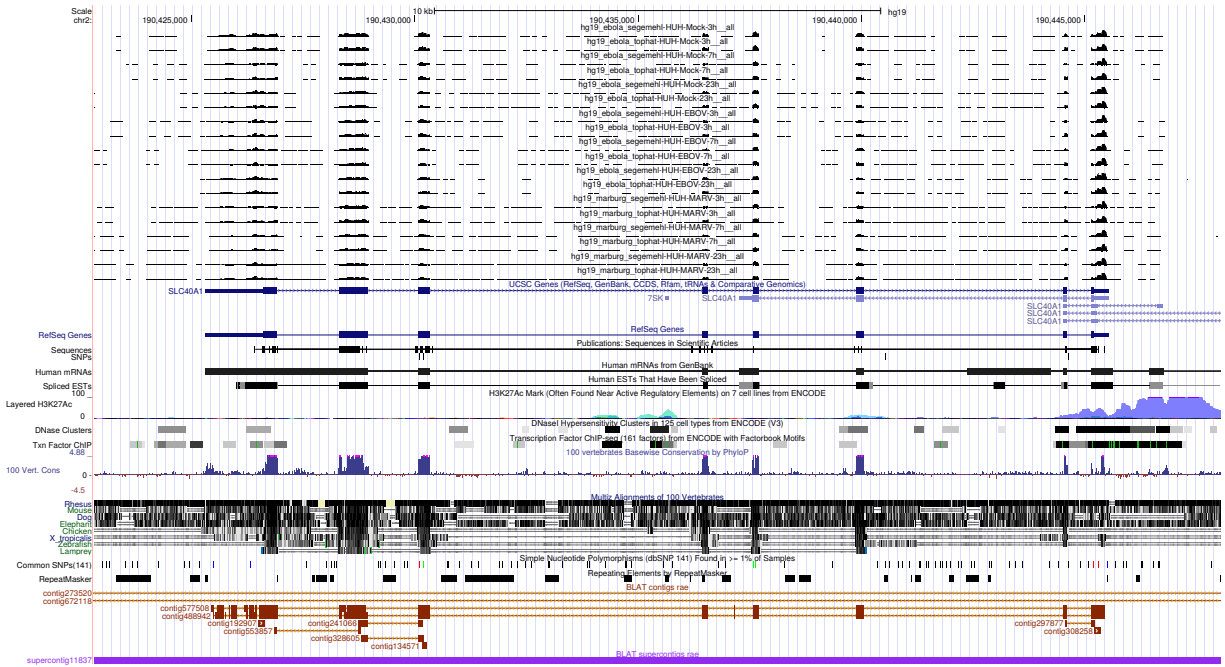


Figure 3: UCSC Genome Browser screenshot of gene SLC40A1.