

1 CSRNP1

This gene encodes a protein that localizes to the nucleus and expression of this gene is induced in response to elevated levels of axin. The Wnt signalling pathway, which is negatively regulated by axin, is important in axis formation in early development and impaired regulation of this signalling pathway is often involved in tumors.

This gene is found to be up-regulated in human by Ebola (23h) but not in bat.

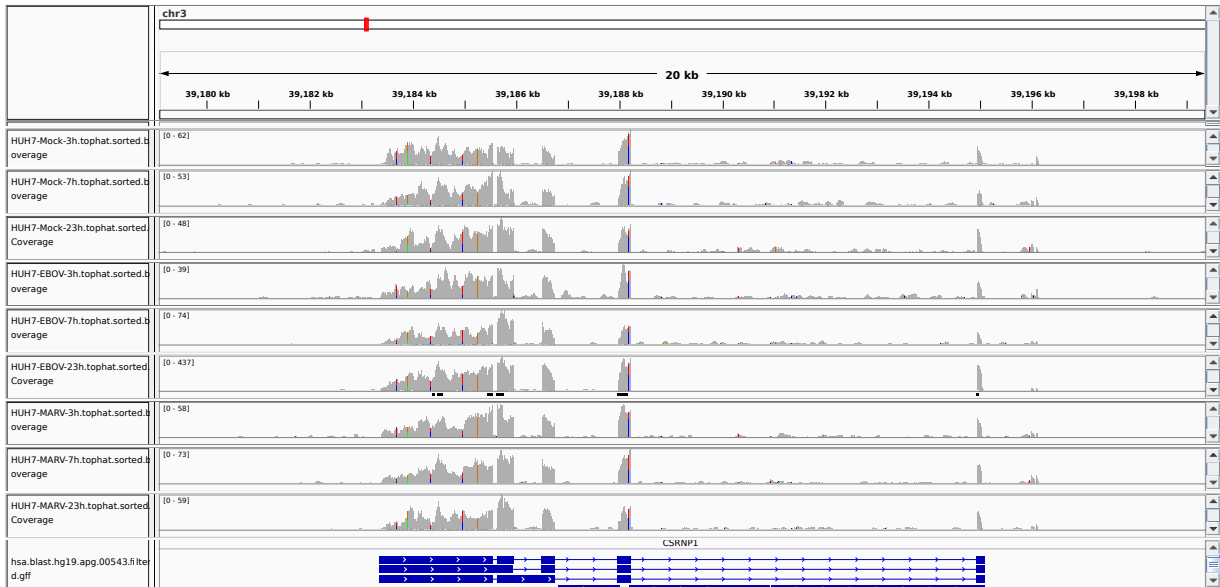


Figure 1: IGV Genome Browser screenshot of gene CSRNP1.

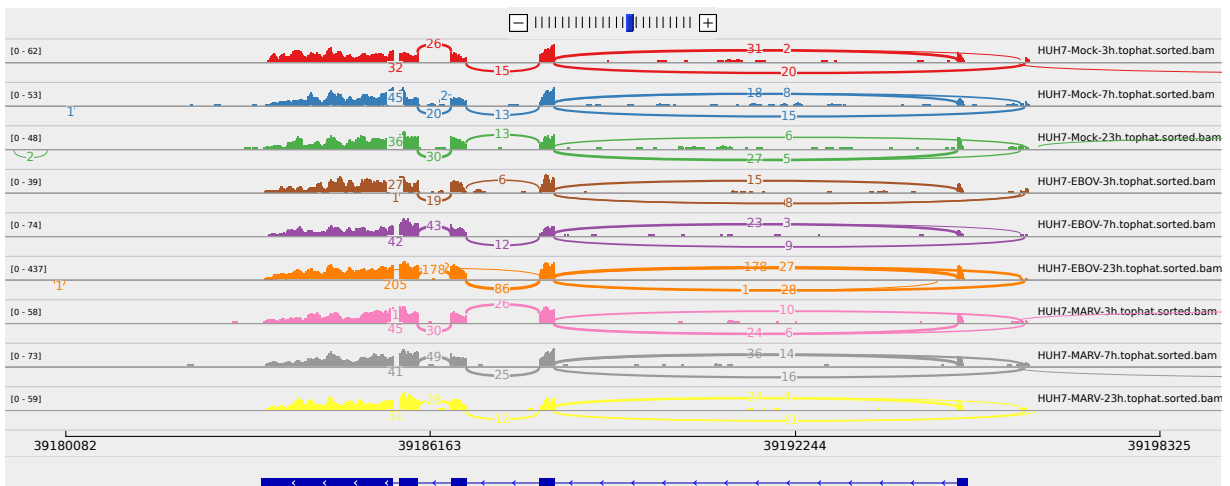


Figure 2: Sashimi plot of gene CSRNP1.

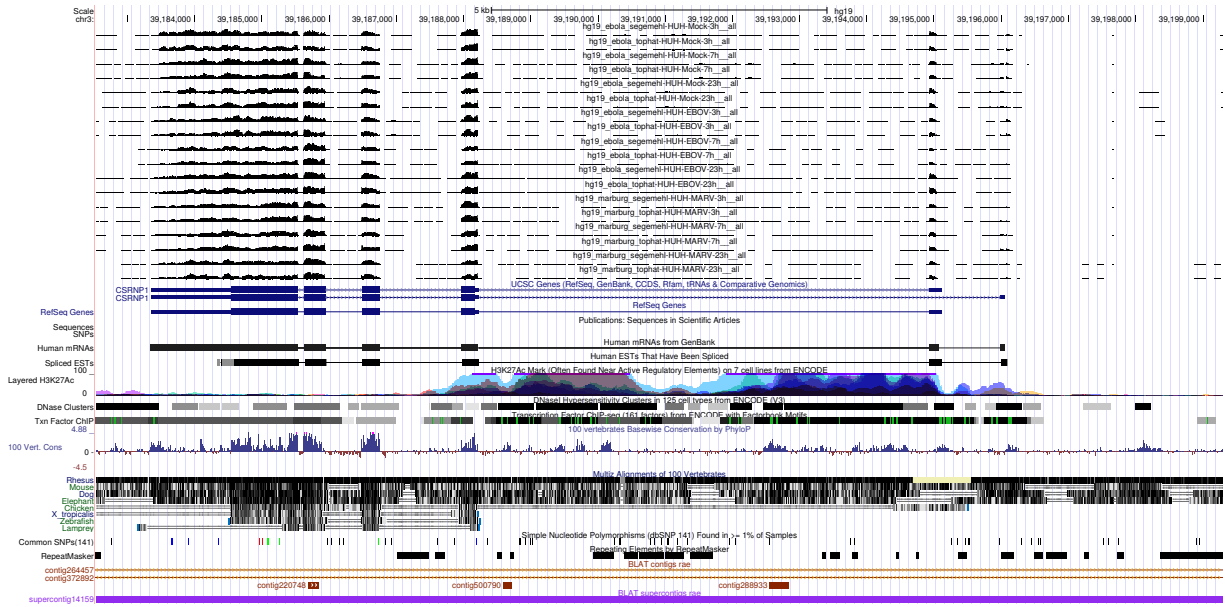


Figure 3: UCSC Genome Browser screenshot of gene CSRNP1.