

1 RHOB

Homo sapiens ras homolog family member B (RHOB), mRNA. The gene is highly expressed in bat and human.

*It is upregulated upon infection of Marburg in bat, but slightly downregulated in Ebola infected bat. In human it is stably expressed, with the exception of a three times increase expression due to Ebola infection. *



Figure 1: IGV Genome Browser screenshot of gene RHOB.

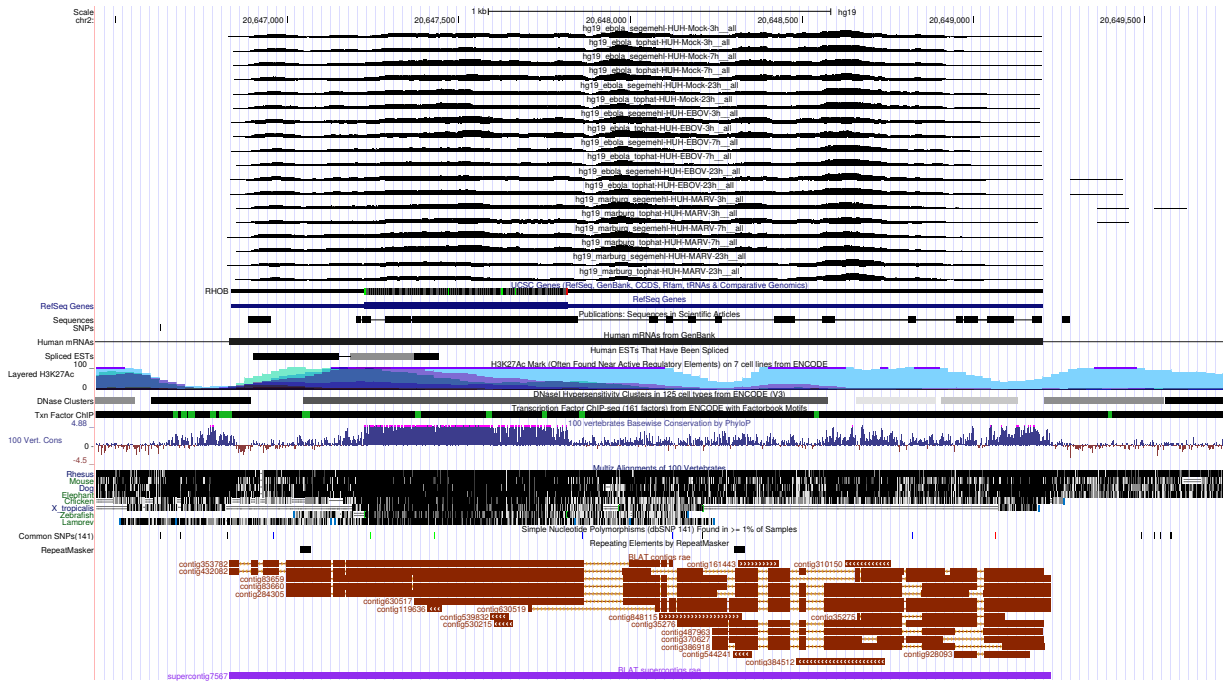


Figure 2: UCSC Genome Browser screenshot of gene RHOB.