

1 SQSTM1

This gene encodes a multifunctional protein that binds ubiquitin and regulates activation of the nuclear factor kappa-B (NF- κ B) signaling pathway. The protein functions as a scaffolding/adaptor protein in concert with TNF receptor-associated factor 6 to mediate activation of NF- κ B in response to upstream signals. Alternatively spliced transcript variants encoding either the same or different isoforms have been identified for this gene. Mutations in this gene result in sporadic and familial Paget disease of bone. Highly expressed in human, upregulated in EBOV and MARV, more strongly in 23h in 7h. In rae the shape changes in 23h EBOV and MARV.



Figure 1: IGV Genome Browser screenshot of gene SQSTM1.

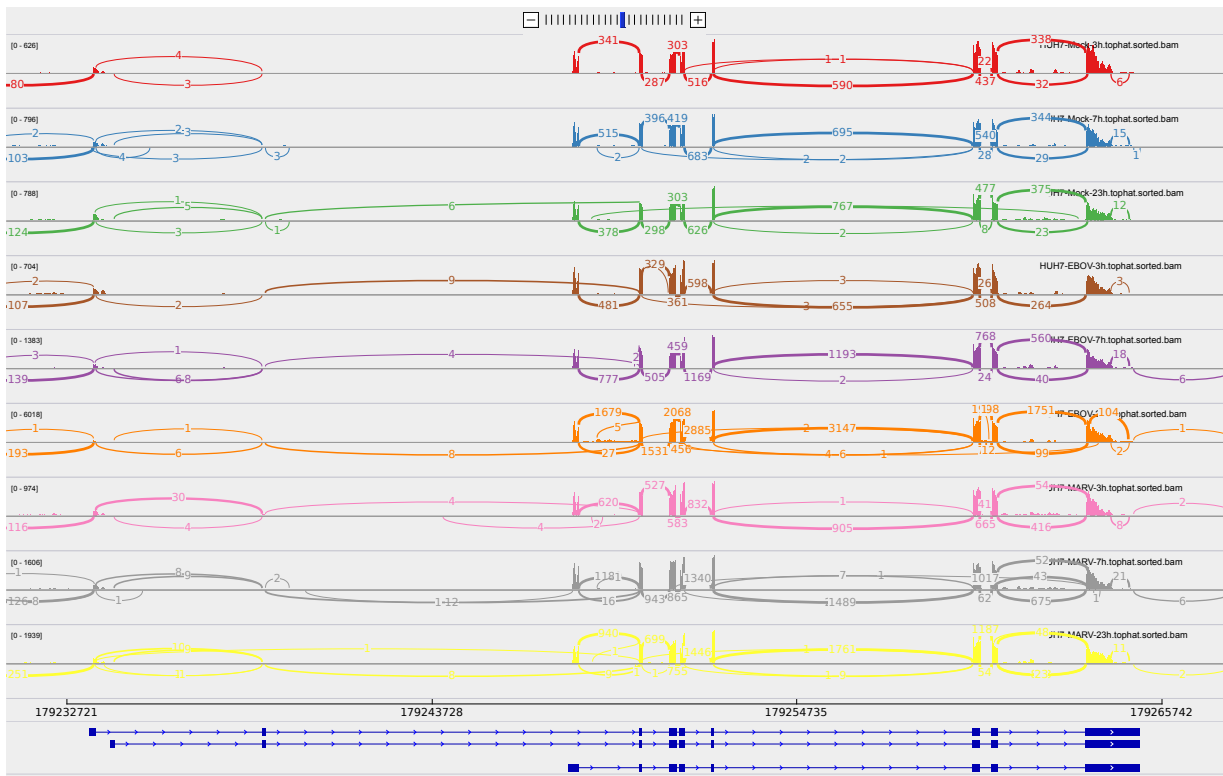


Figure 2: Sashimi plot of gene SQSTM1.

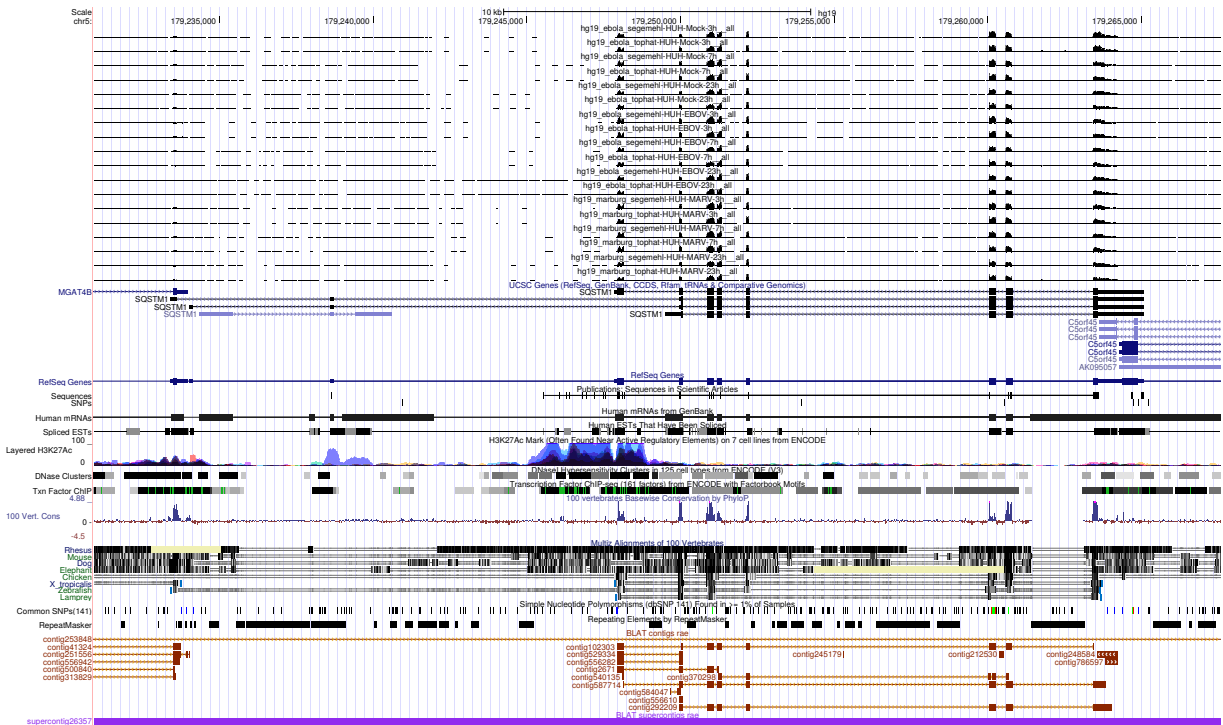


Figure 3: UCSC Genome Browser screenshot of gene SQSTM1.