

1 SLC9A1

Homo sapiens solute carrier family 9, subfamily A (NHE1, cation proton antiporter 1), member 1 (SLC9A1), transcript variant 2 gene encodes a Na⁺/H⁺ antiporter that is a member of the solute carrier family 9. The encoded protein is a plasma membrane transporter that is expressed in the kidney and intestine. This protein plays a central role in regulating pH homeostasis, cell migration and cell volume. This protein may also be involved in tumor growth.

In HG19 MOCK this gene is downregulated, but upregulated during ebola infection, while marburg infection doesn't affect the expression level. In the RAE samples the amount of transcripts increase for ebola and marburg infection.

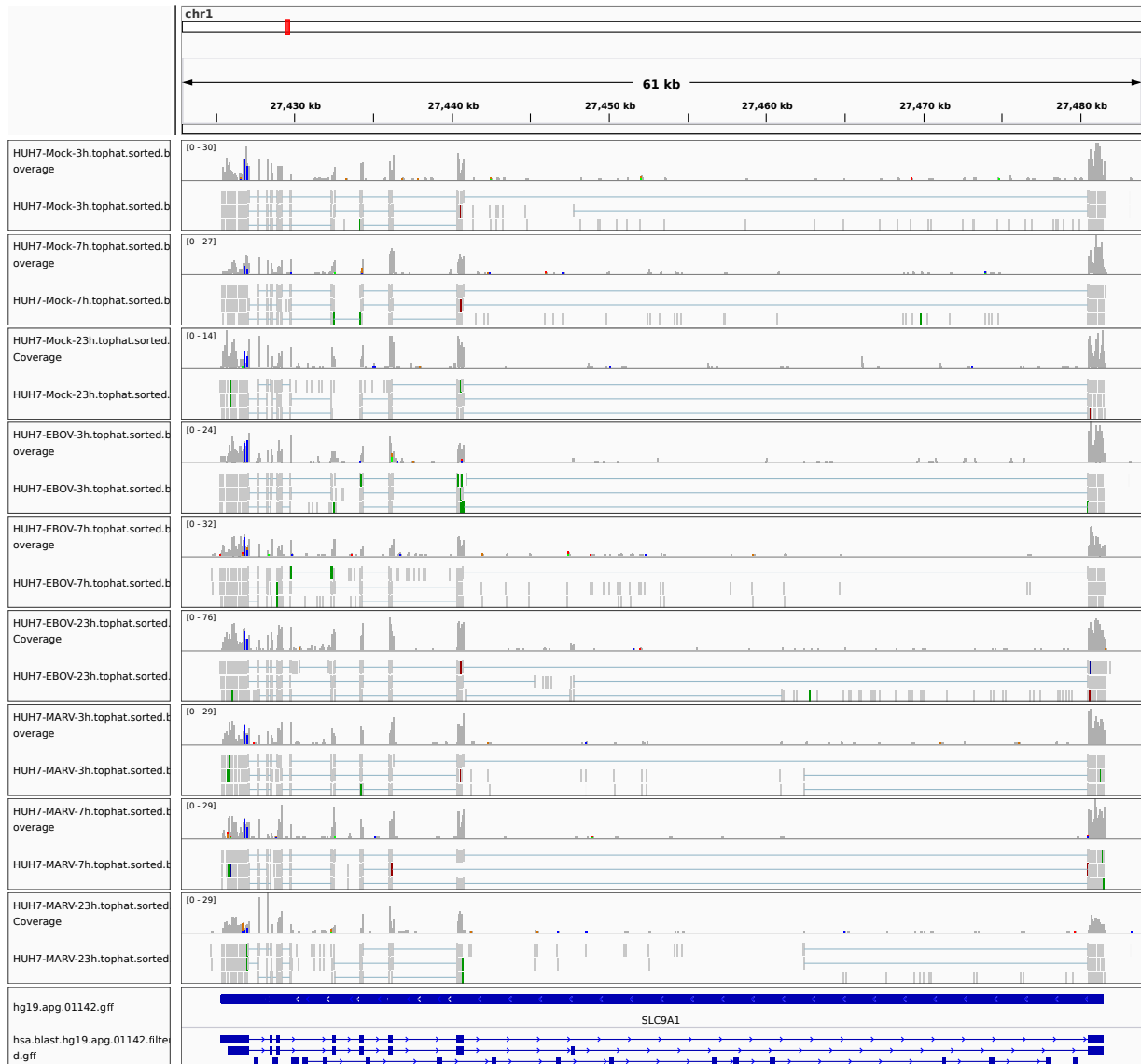


Figure 1: IGV Genome Browser screenshot of gene SLC9A1.

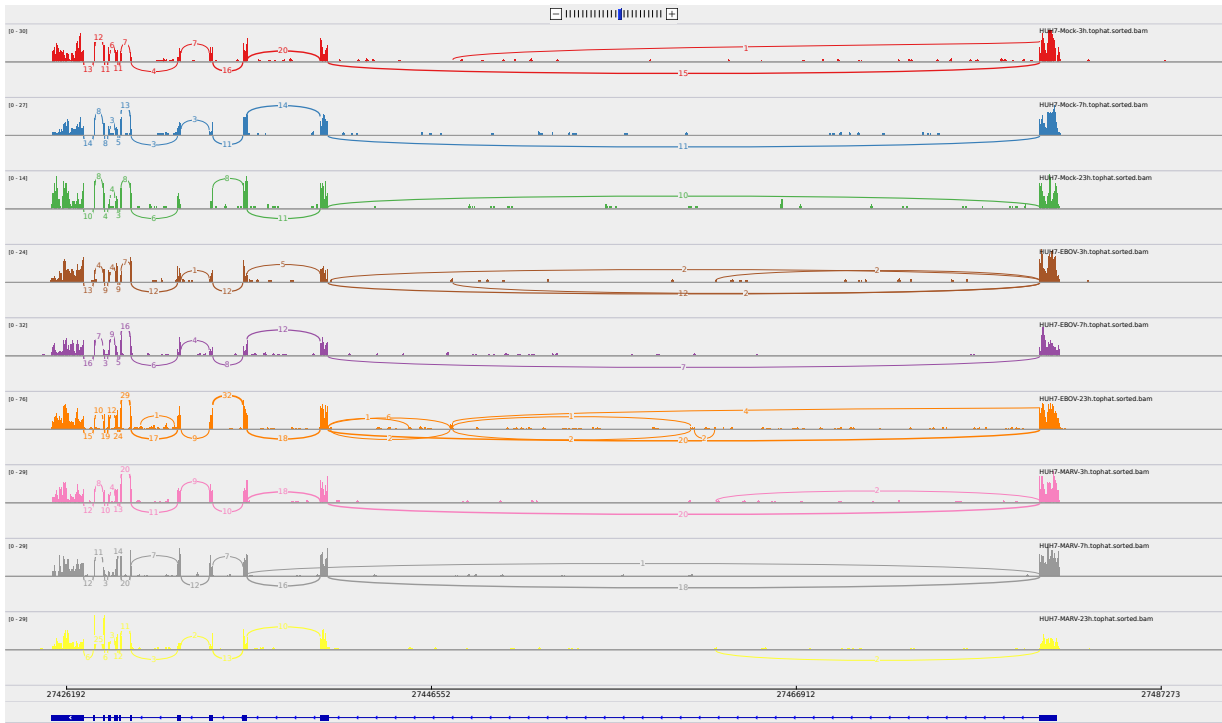


Figure 2: Sashimi plot of gene SLC9A1.

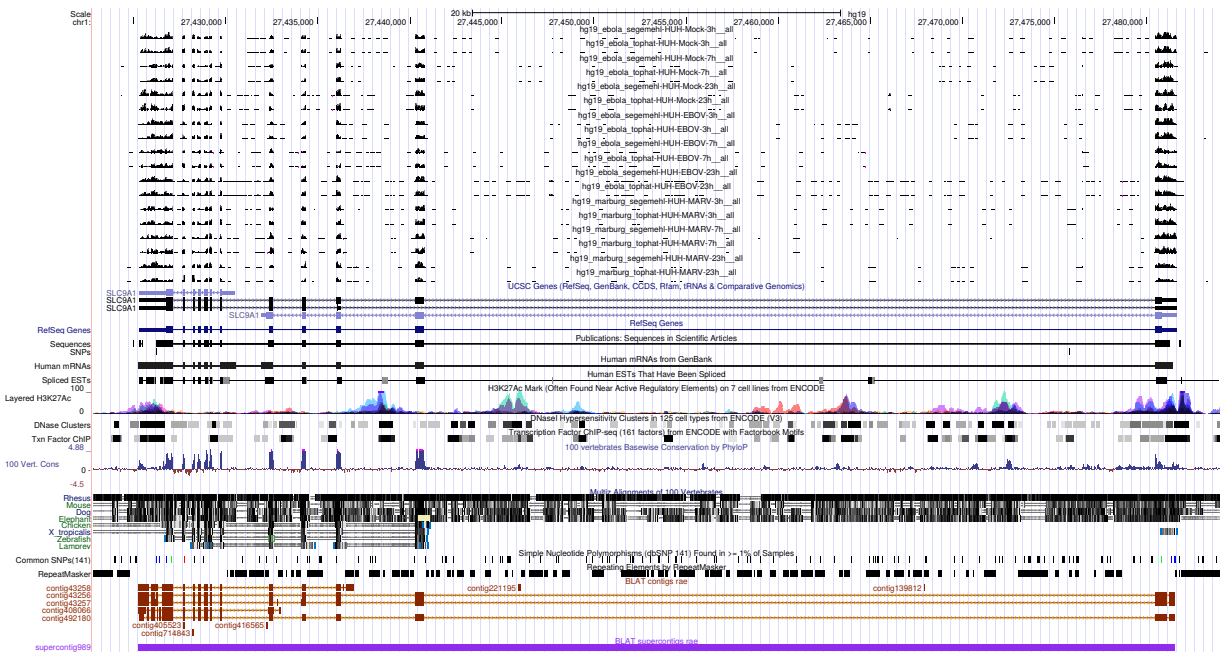


Figure 3: UCSC Genome Browser screenshot of gene SLC9A1.