

1 TRIM38

This gene encodes a member of the tripartite motif (TRIM) family. The encoded protein contains a RING-type zinc finger, B box-type zinc finger and SPRY domain. The function of this protein has not been identified. A pseudogene of this gene is located on the long arm of chromosome 4. The locus of the gene was covered only with very few reads.

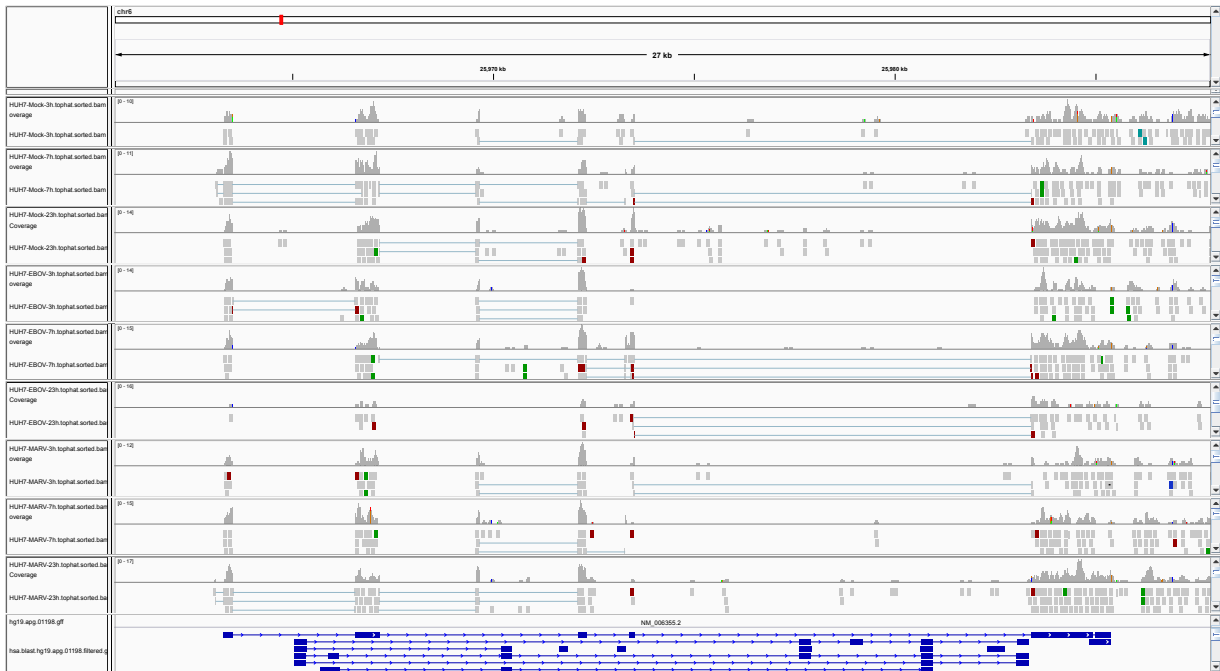


Figure 1: IGV Genome Browser screenshot of gene TRIM38.

Figure 2: Sashimi plot of gene TRIM38.

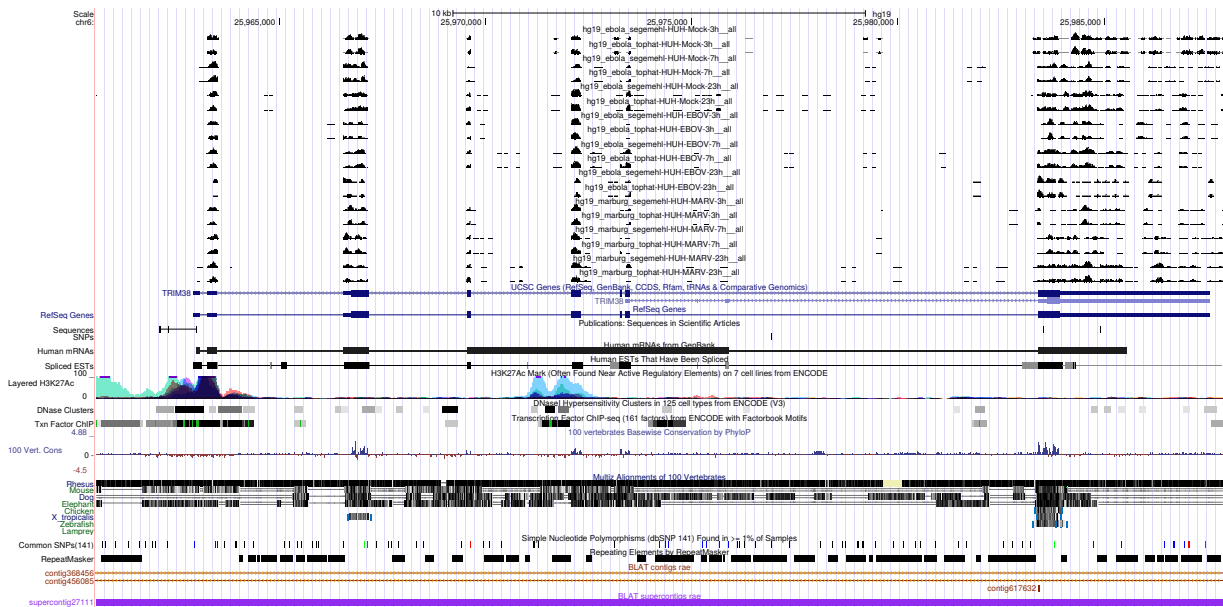


Figure 3: UCSC Genome Browser screenshot of gene TRIM38.