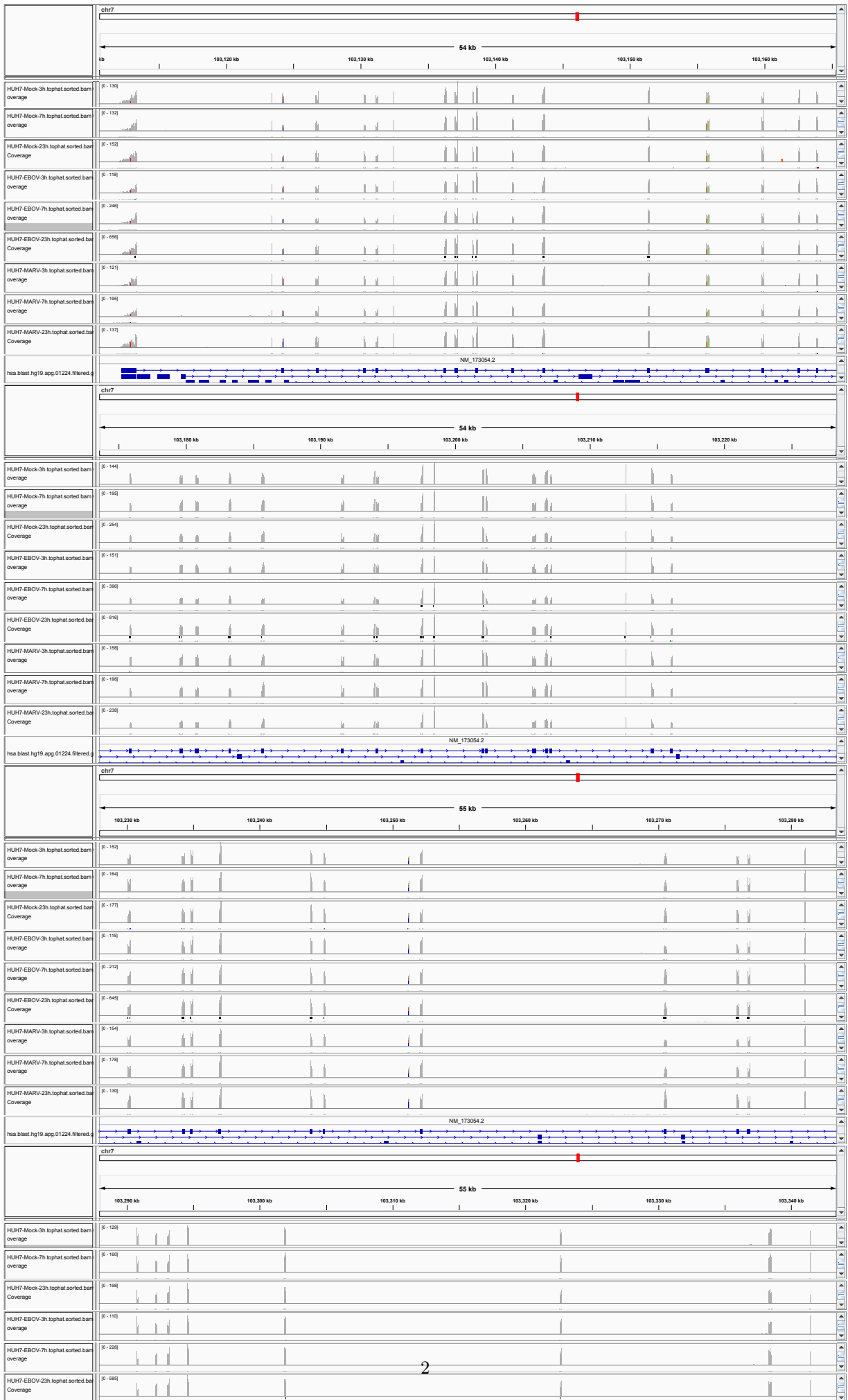
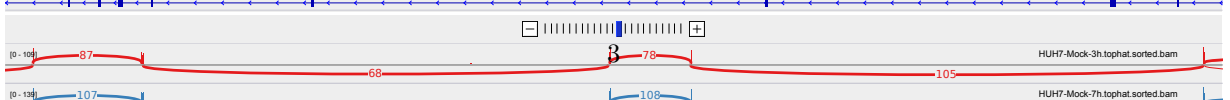
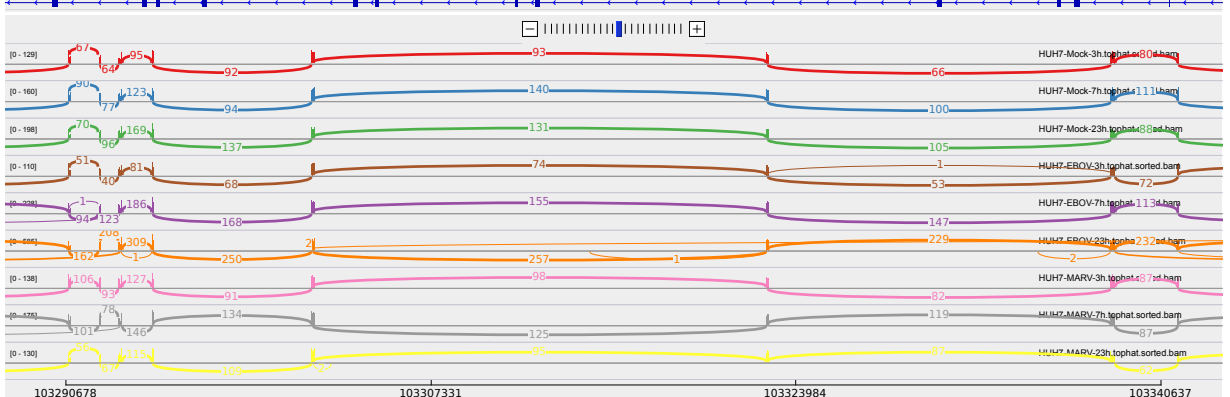
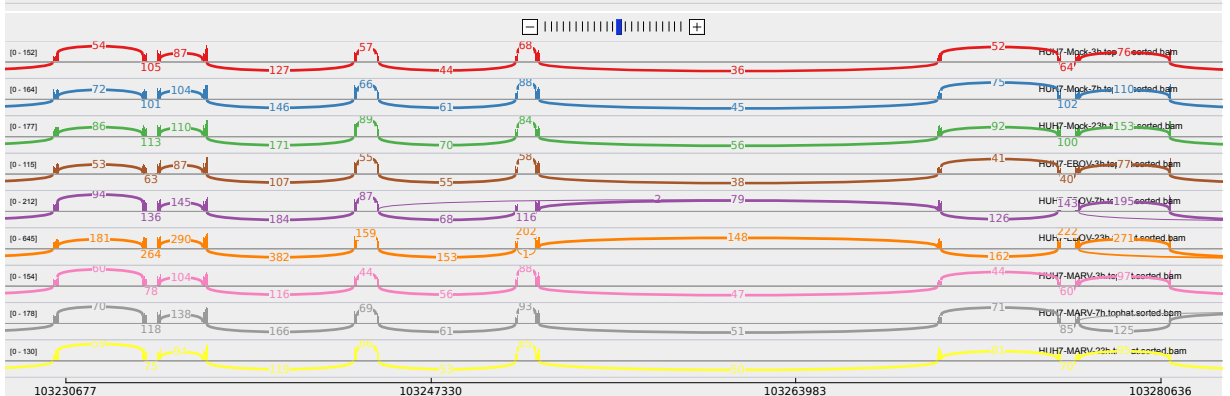
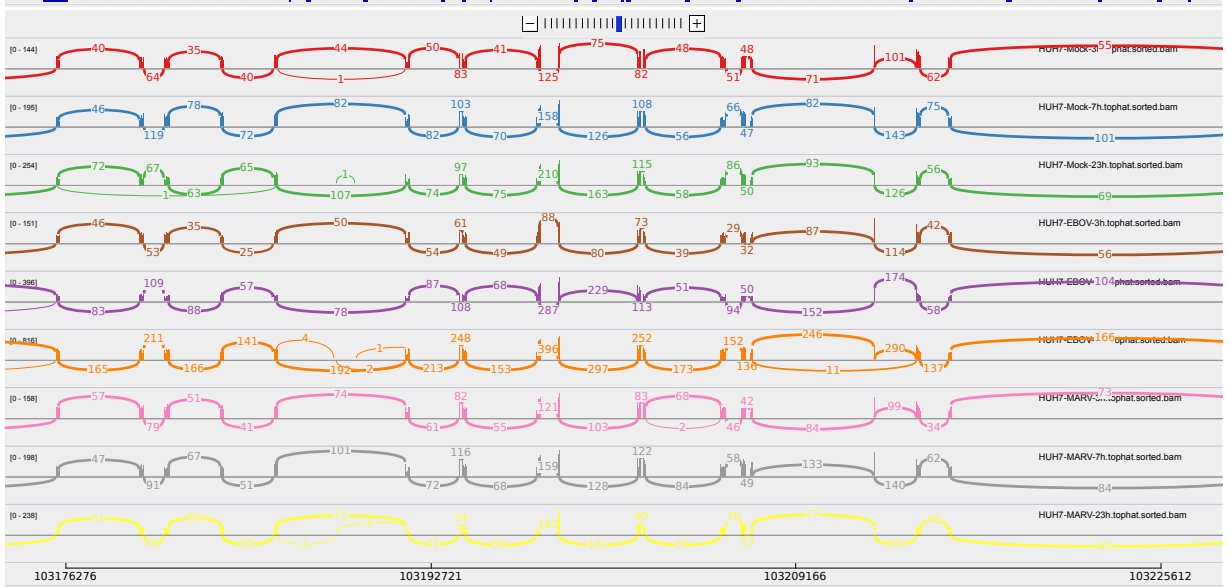
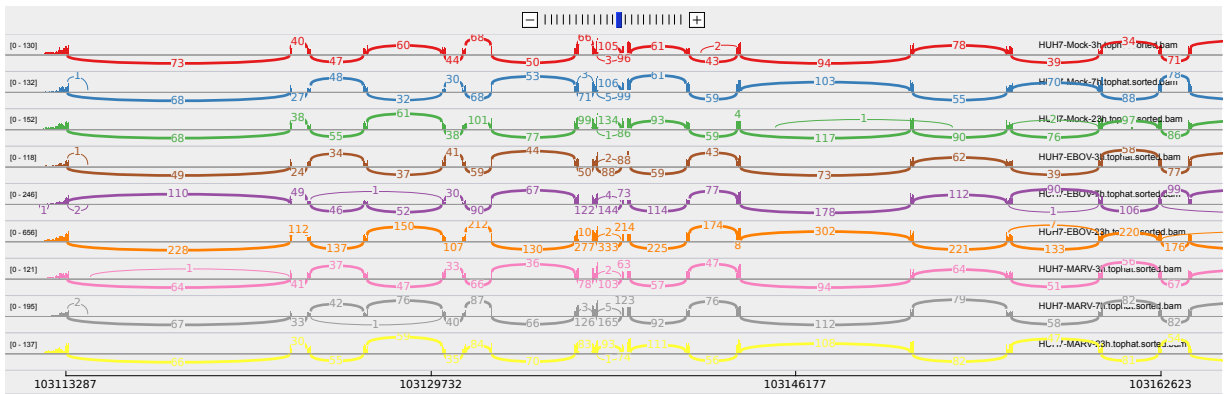


1 RELN

This gene encodes a large secreted extracellular matrix protein thought to control cell-cell interactions critical for cell positioning and neuronal migration during brain development. This protein may be involved in schizophrenia, autism, bipolar disorder, major depression and in migration defects associated with temporal lobe epilepsy. Mutations of this gene are associated with autosomal recessive lissencephaly with cerebellar hypoplasia.

This gene is upregulated in Ebola infected cells in human. No homolog in bat was found.





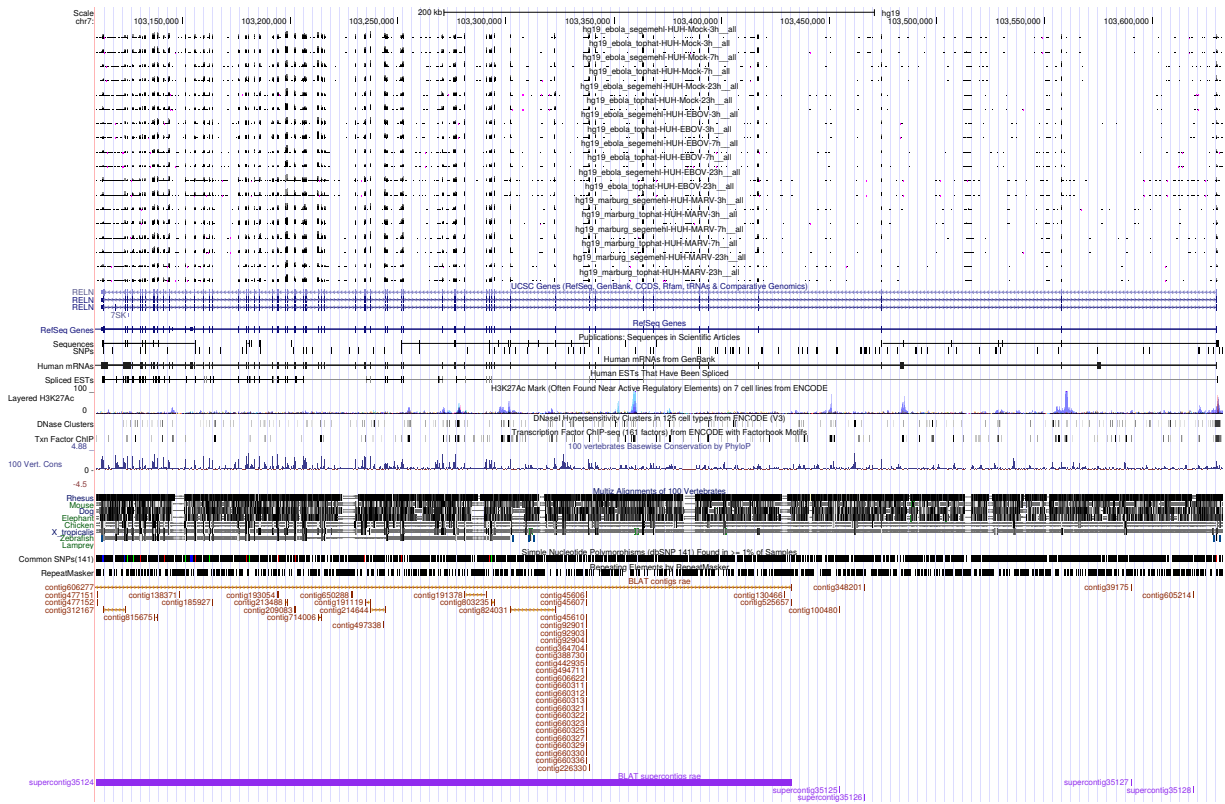


Figure 3: UCSC Genome Browser screenshot of gene RELN.