

1 TRIM8

The protein encoded by this gene is a member of the tripartite motif (TRIM) family. The TRIM motif includes three zinc-binding domains, a RING, a B-box type 1 and a B-box type 2, and a coiled-coil region. This protein localizes to nuclear bodies. Its structure is similar to some tumor suppressor proteins and its gene maps to a locus thought to contain tumor suppressor genes.

While this gene does not show any differential expression for MOCK and MARV samples, there is a strong upregulation for EBOV-infected cells between 7 h and 23 h p.i.

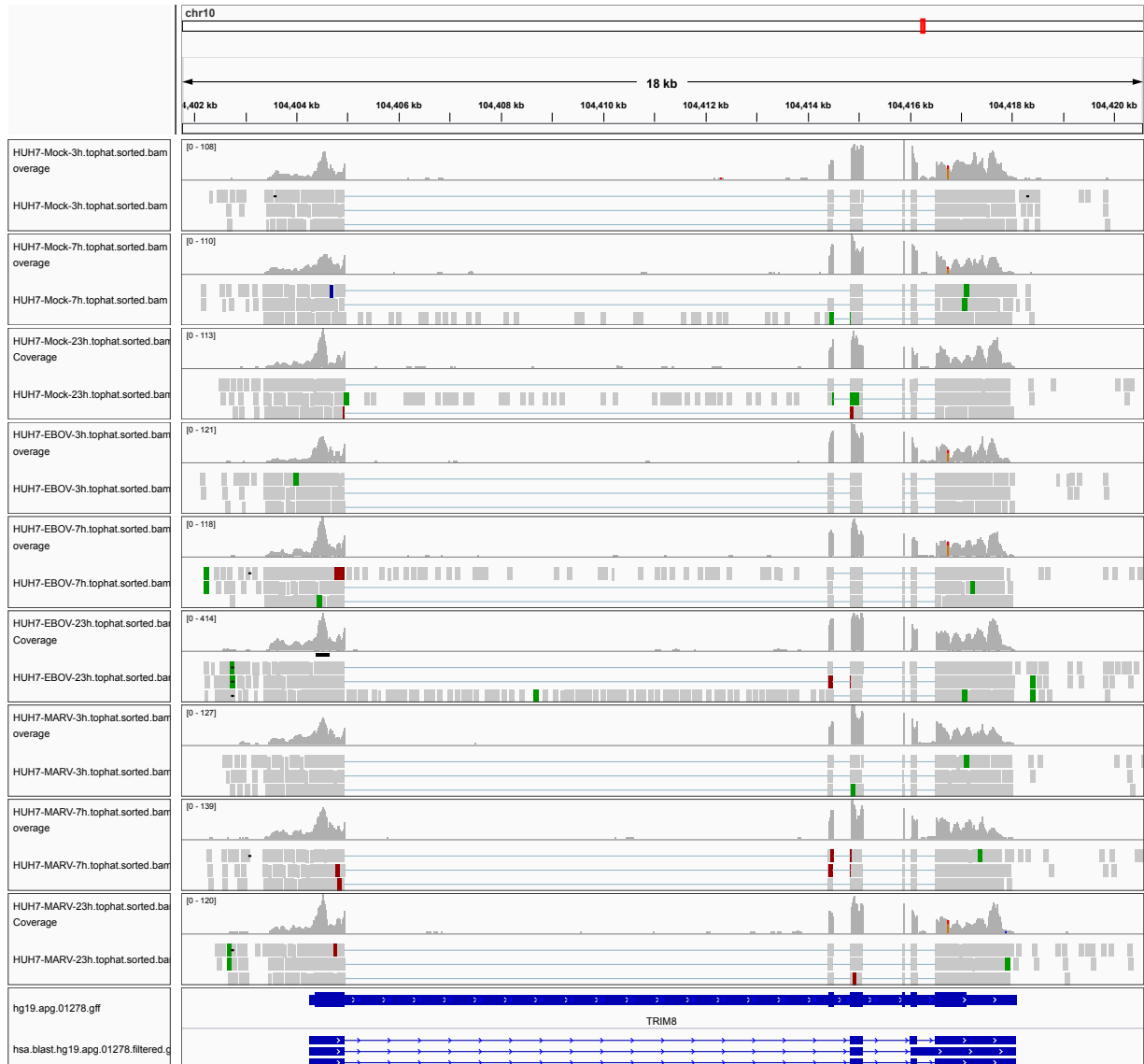


Figure 1: IGV Genome Browser screenshot of gene TRIM8.

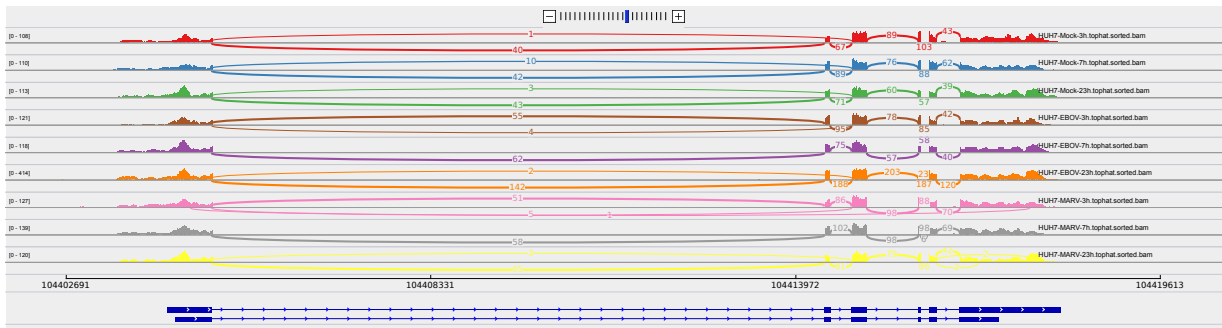


Figure 2: Sashimi plot of gene TRIM8.

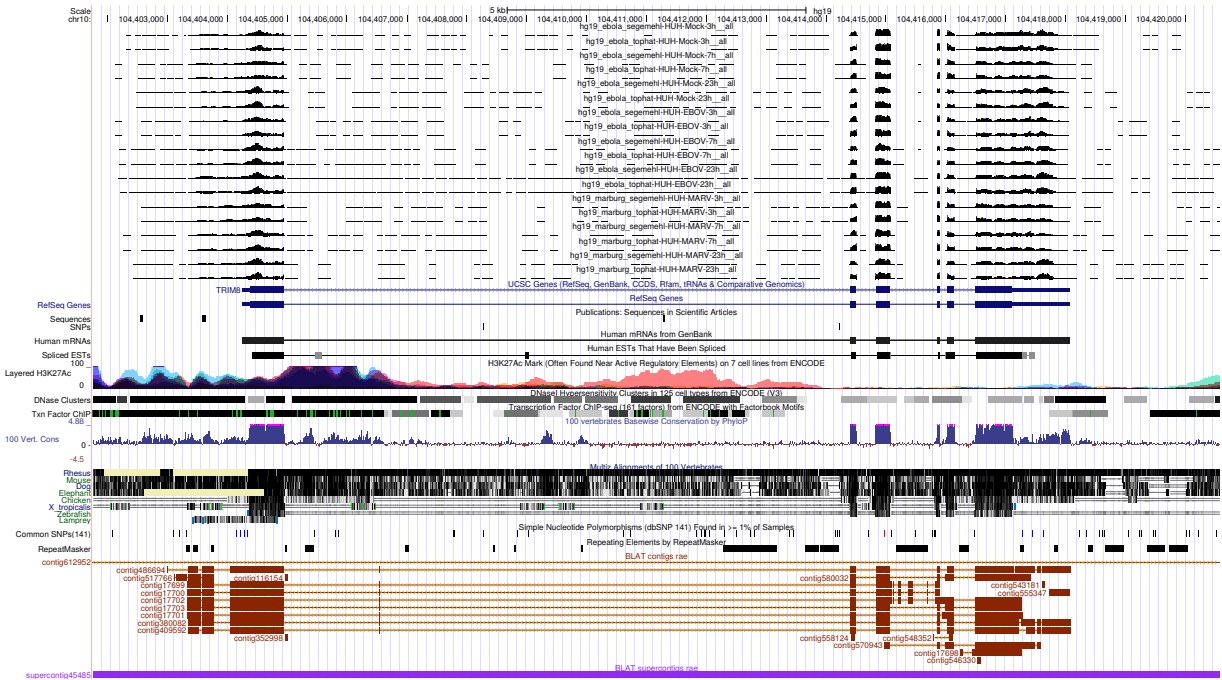


Figure 3: UCSC Genome Browser screenshot of gene TRIM8.