

1 CALM1

Homo sapiens calmodulin 1 (phosphorylase kinase, delta) (*CALM1*), mRNA. This gene encodes a member of the EF-hand calcium-binding protein family. It is one of three genes which encode an identical calcium binding protein which is one of the four subunits of phosphorylase kinase. Two pseudogenes have been identified on chromosome 7 and X. Multiple transcript variants encoding different isoforms have been found for this gene.

This gene is normally expressed in all cells and downregulated in human cells 23 h after Ebola infection.



Figure 1: IGV Genome Browser screenshot of gene *CALM1*.

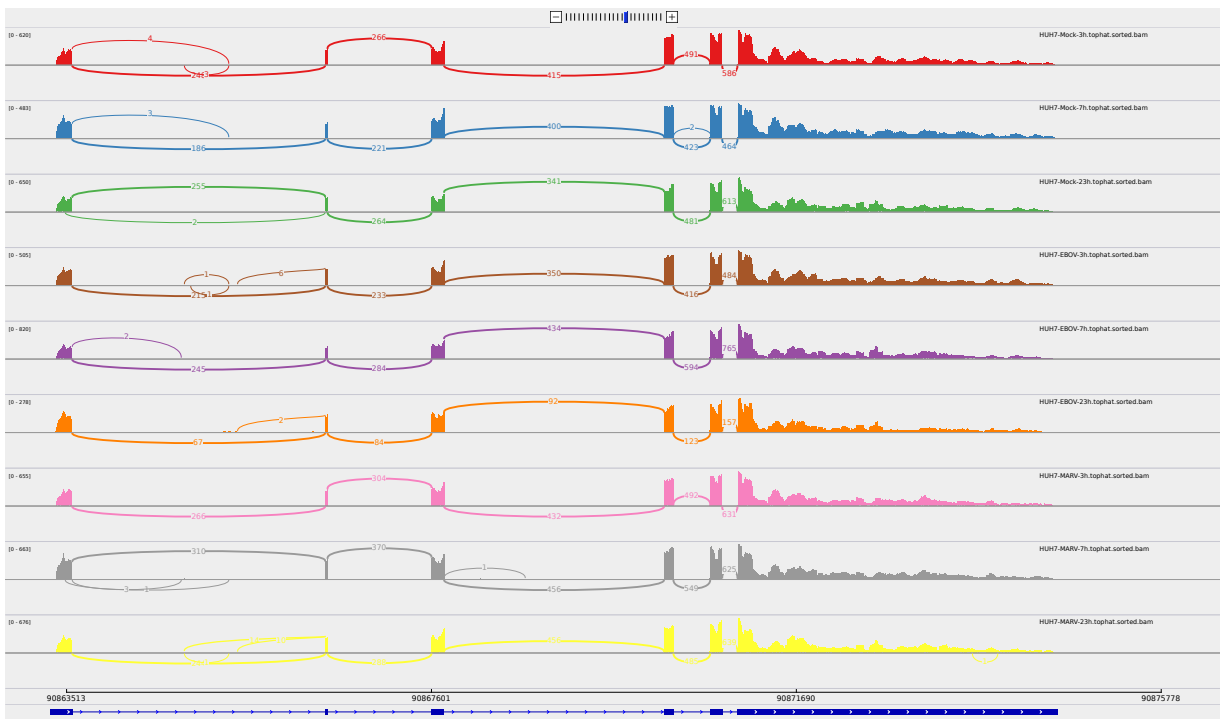


Figure 2: Sashimi plot of gene *CALM1*.

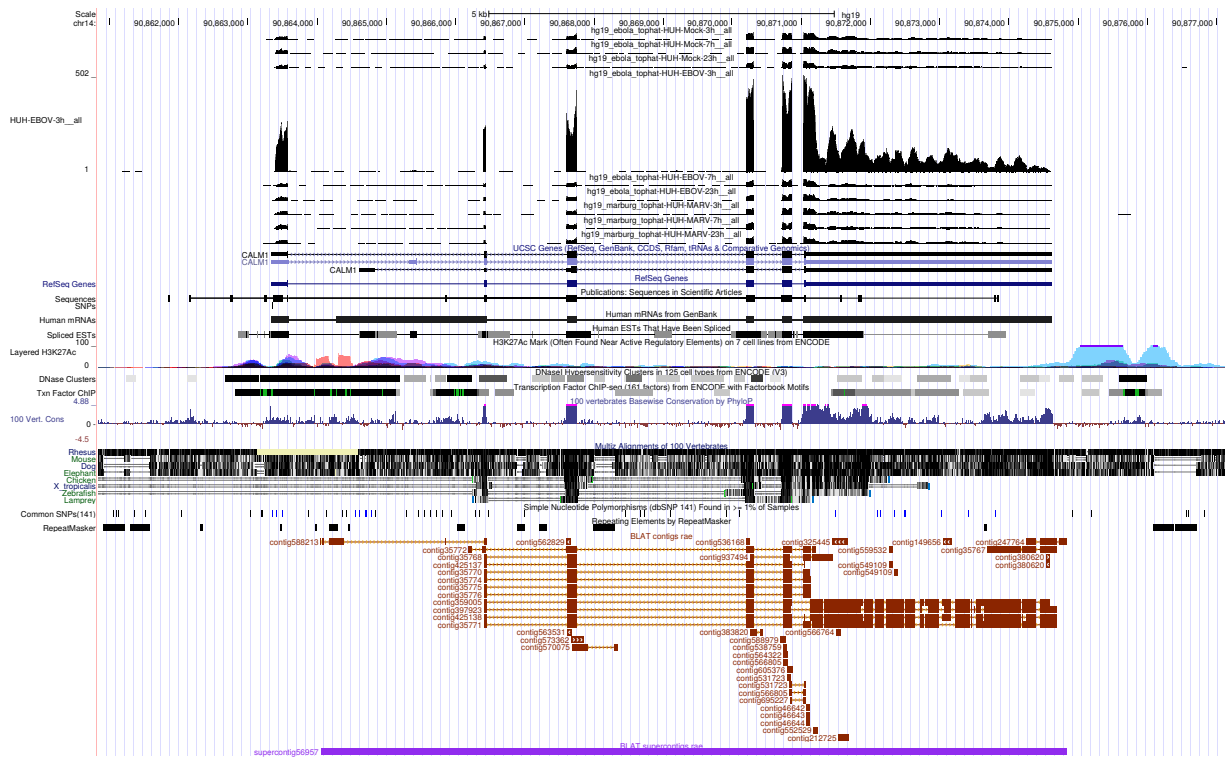


Figure 3: UCSC Genome Browser screenshot of gene CALM1.