

1 GJA1

GJA1 (gap junction protein, alpha 1) is involved in the gap junction pathway.

It seems to be downregulated in human infected with Ebola after 23 h and in bat.



Figure 1: IGV Genome Browser screenshot of gene GJA1.

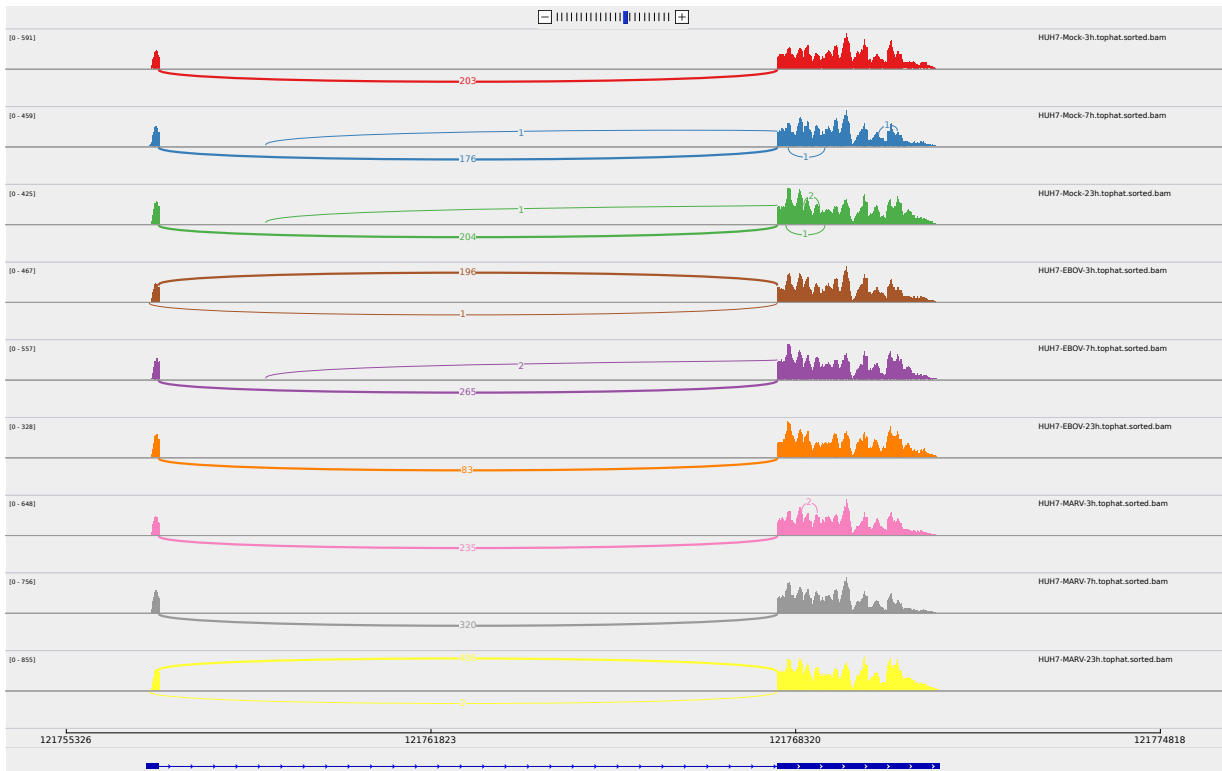


Figure 2: Sashimi plot of gene GJA1.

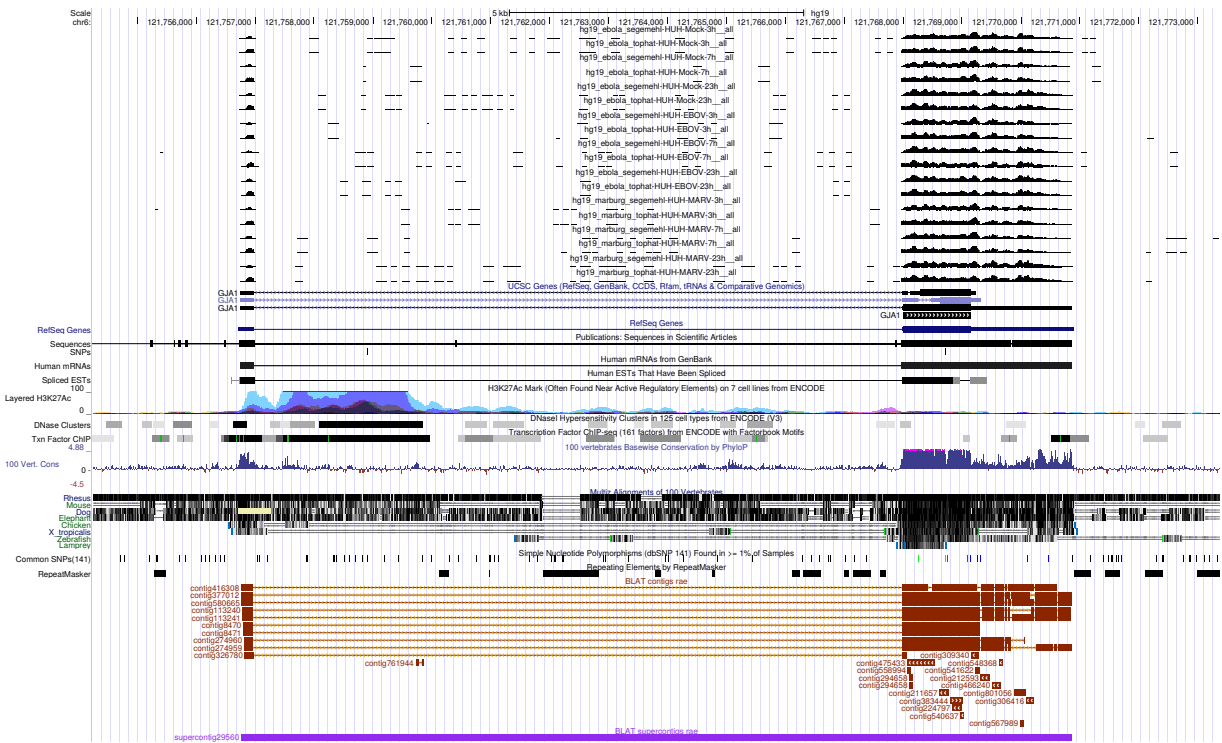


Figure 3: UCSC Genome Browser screenshot of gene GJA1.