

# 1 MEGF9

The multiple EGF-like (epidermal growth factor-like) domains 9 gene is an integral component of membrane. In human infected with Ebola this gene seems to be slightly upregulated at 3 hours post infection and downregulated at 23 hours post infection.

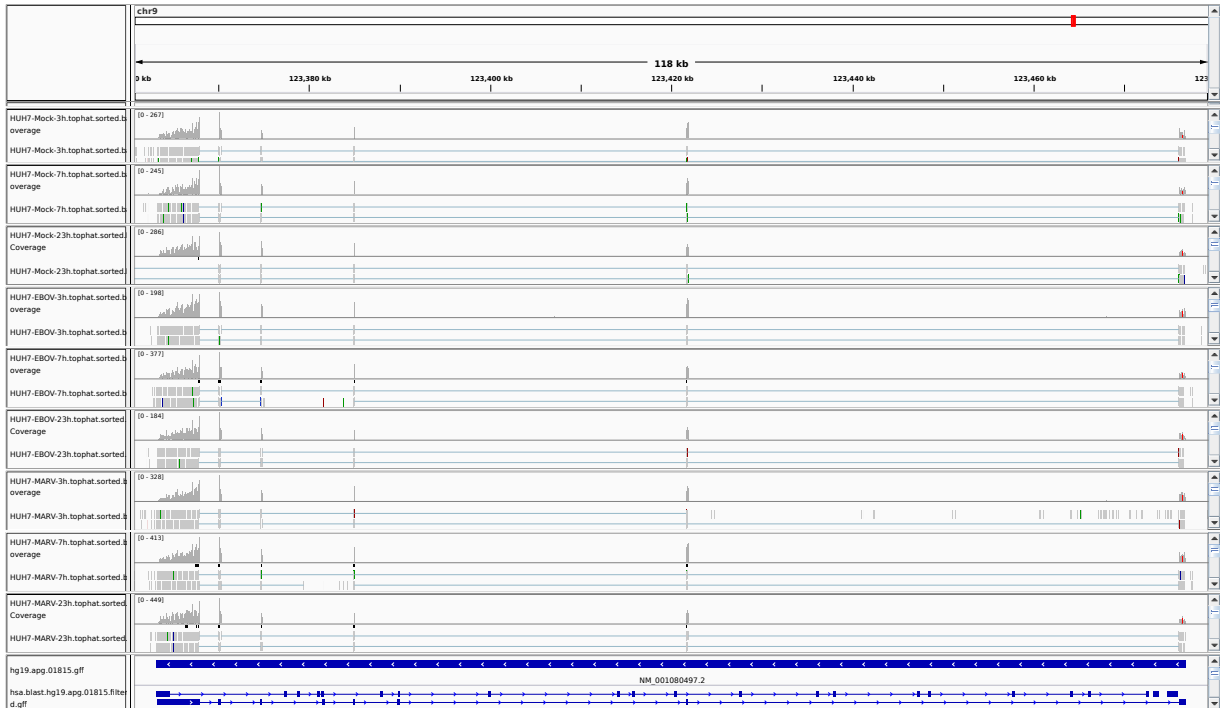


Figure 1: IGV Genome Browser screenshot of gene MEGF9.

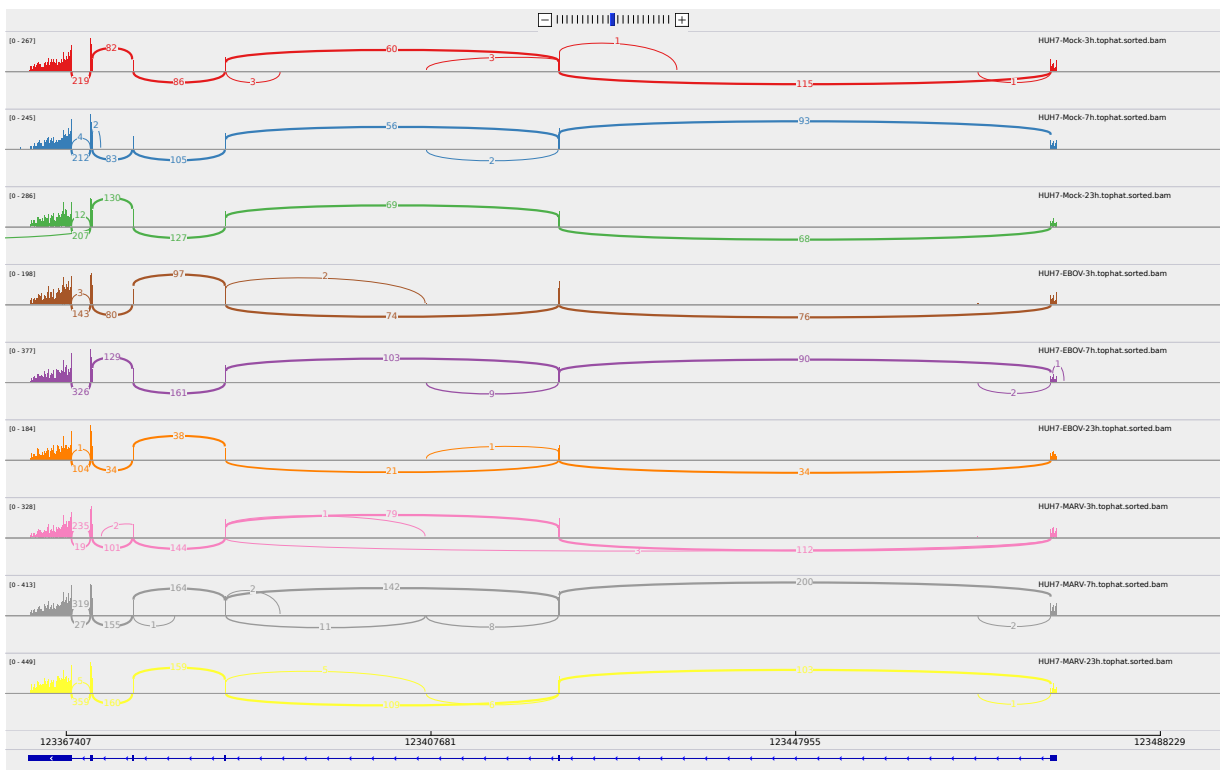


Figure 2: Sashimi plot of gene MEGF9.

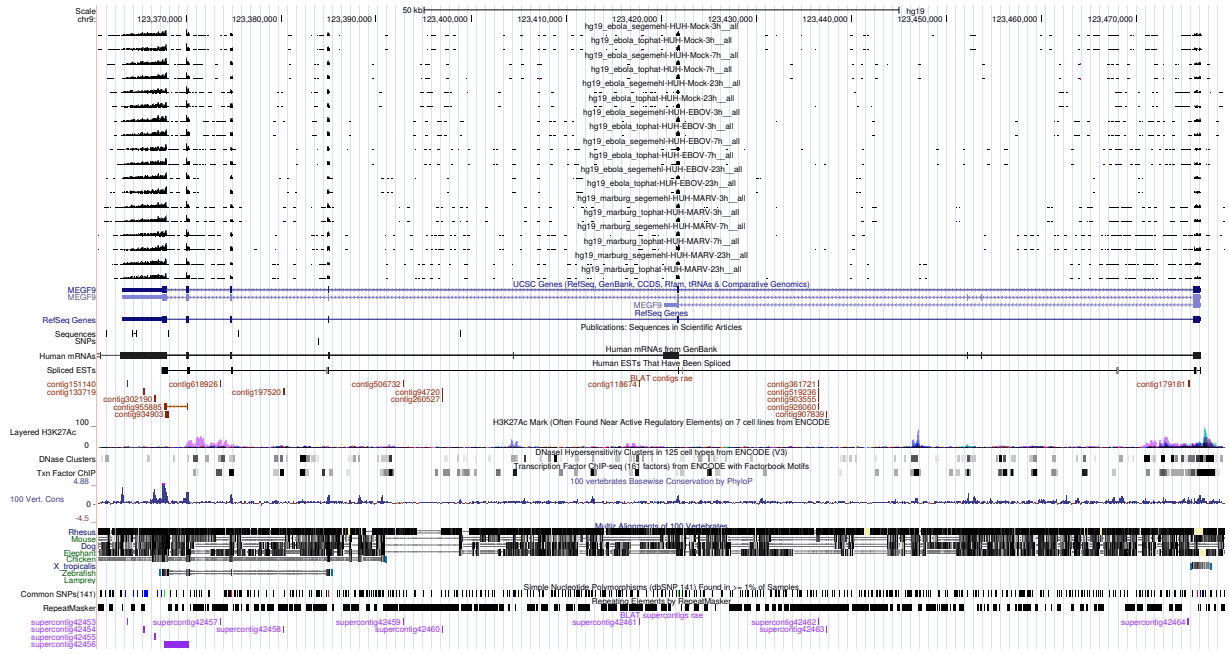


Figure 3: UCSC Genome Browser screenshot of gene MEGF9.