

1 TMED7-TICAM2

This locus represents naturally occurring read-through transcription between the neighboring transmembrane emp24 protein transport domain containing 7 (TMED7) and toll-like receptor adaptor molecule 2 (TICAM2) genes. Alternative splicing results in multiple transcript variants, one of which encodes a fusion protein that shares sequence identity with the products of each individual gene. This fusion product functions to negatively regulate the adaptor MyD88-independent toll-like receptor 4 pathway.

This gene is upregulated in Ebola infected cells after 7 h and 23 h.

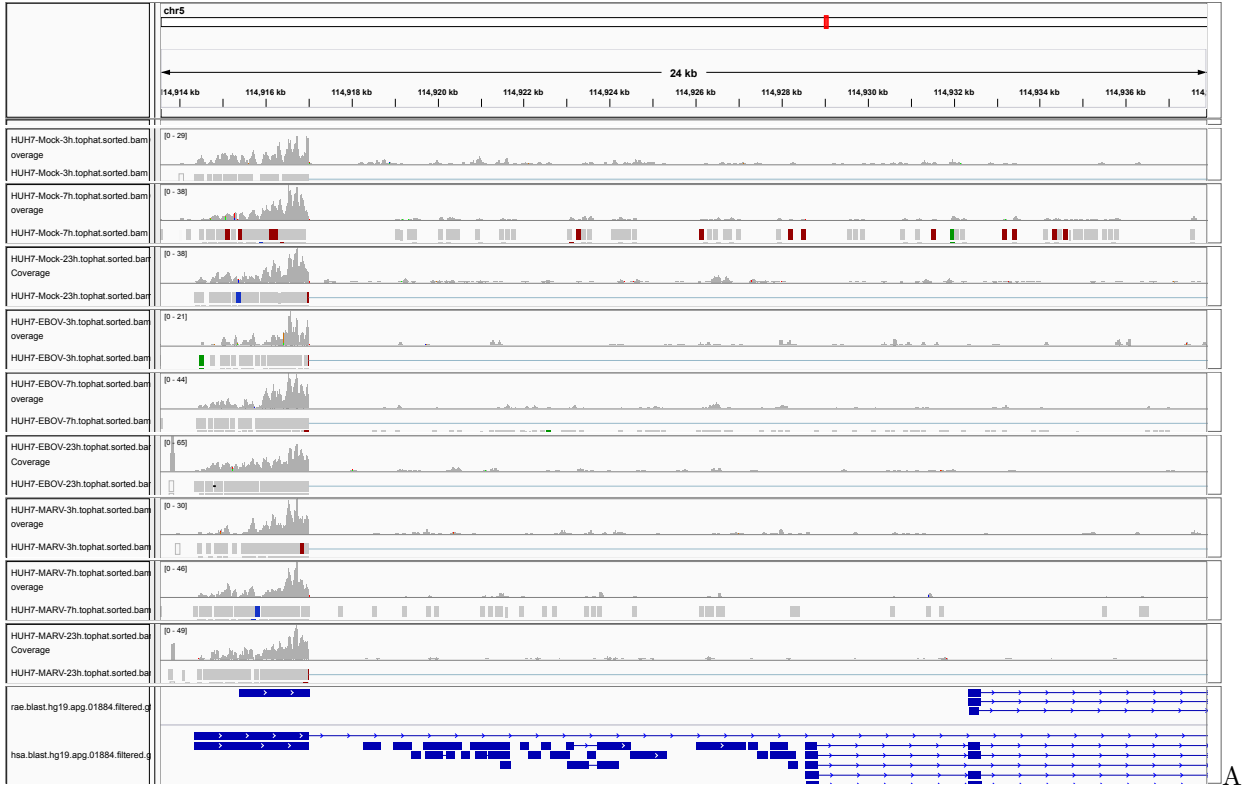


Figure 1: IGV Genome Browser screenshot of gene TMED7-TICAM2.

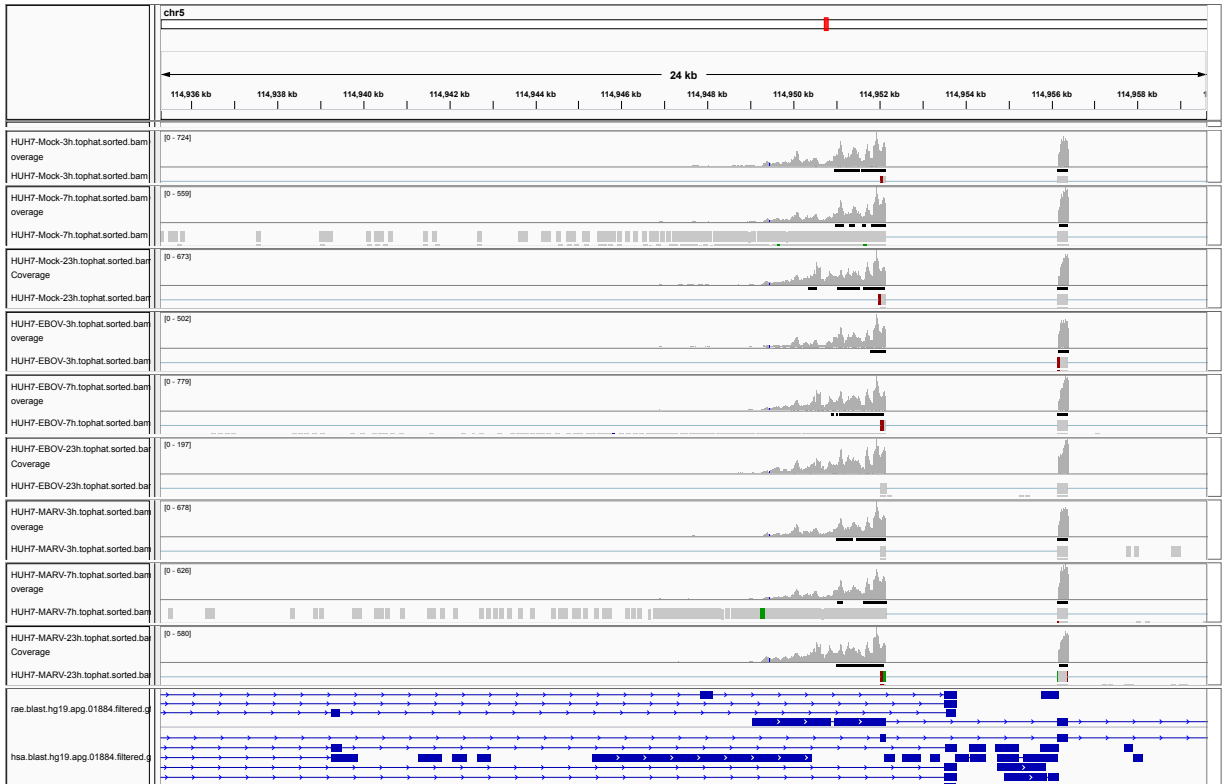


Figure 2: IGV Genome Browser screenshot of gene TMED7-TICAM2.

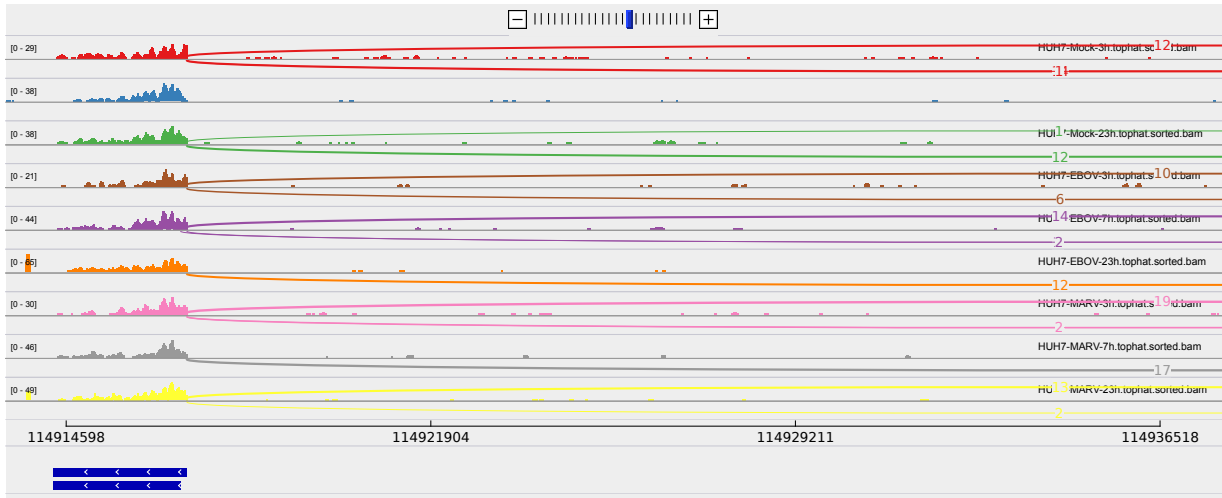


Figure 3: Sashimi plot of gene TMED7-TICAM2.

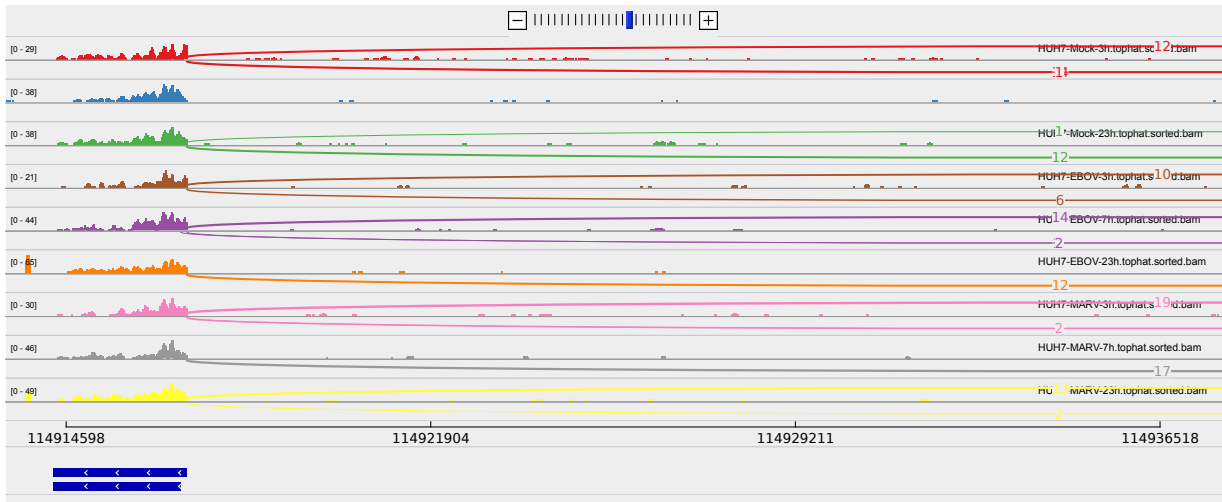


Figure 4: Sashimi plot of gene TMED7-TICAM2.

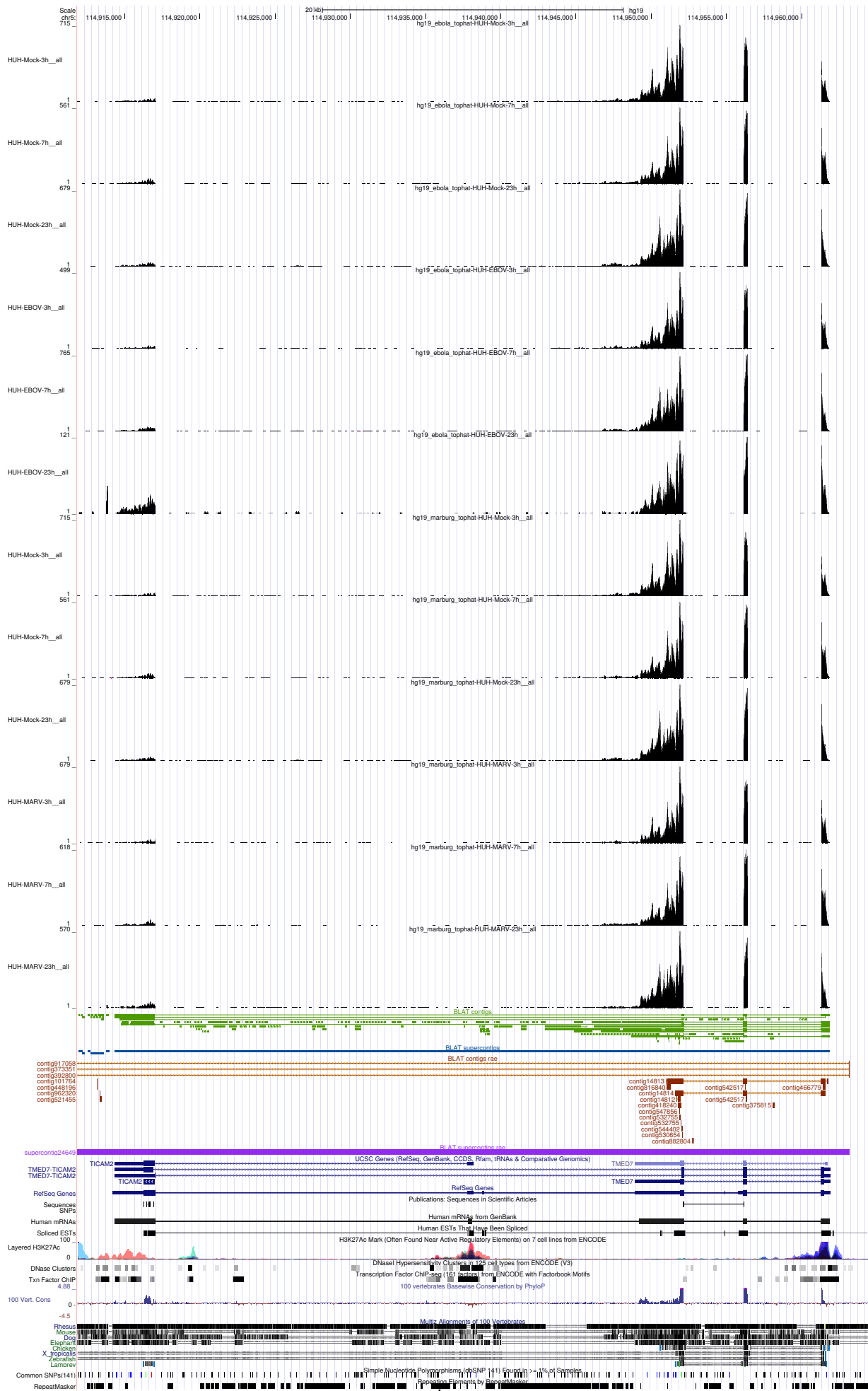


Figure 5: UCSC Genome Browser screenshot of gene TMED7-TICAM2