

1 SLC35D1

Transports both UDP-glucuronic acid (UDP-GlcA) and UDP- N-acetylgalactosamine (UDP-GalNAc) from the cytoplasm to into the endoplasmic reticulum lumen.

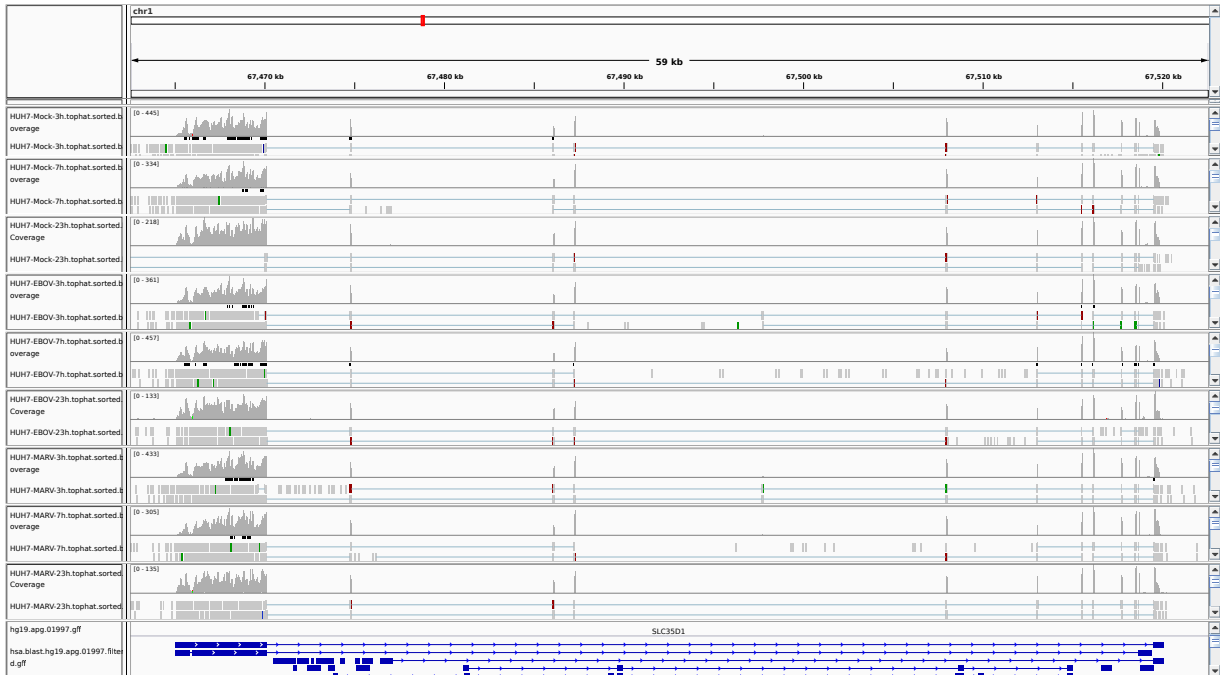


Figure 1: IGV Genome Browser screenshot of gene SLC35D1.

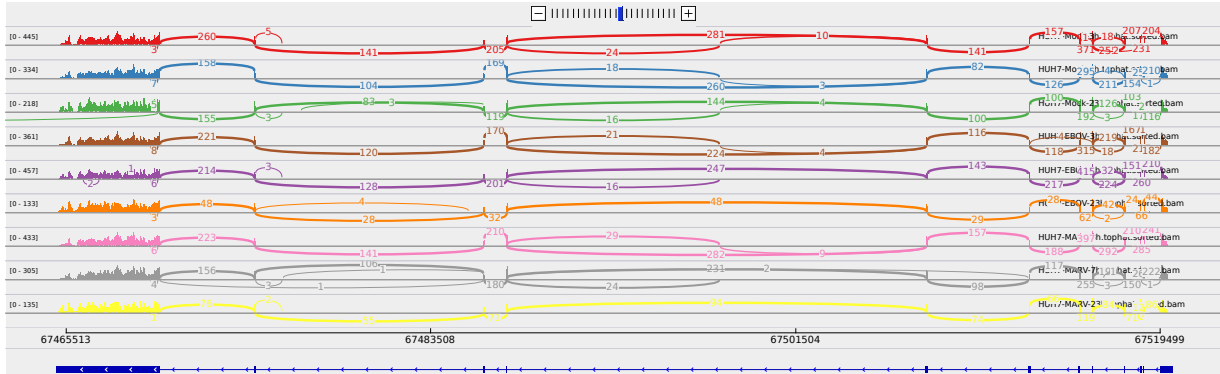


Figure 2: Sashimi plot of gene SLC35D1.

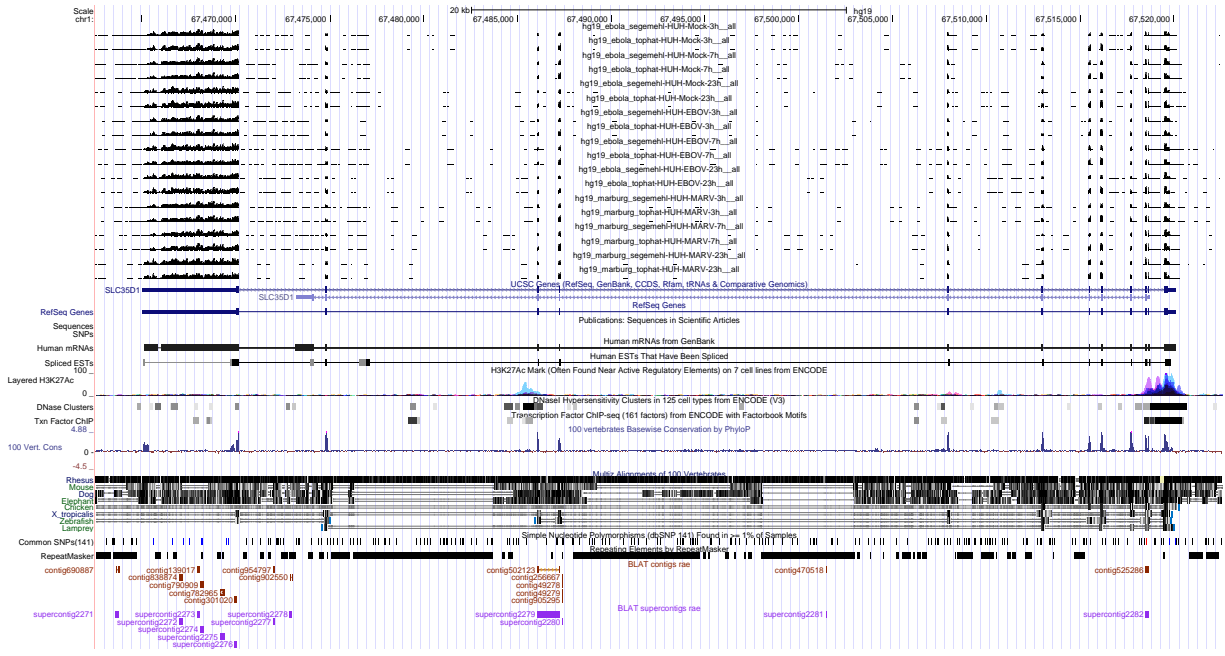


Figure 3: UCSC Genome Browser screenshot of gene SLC35D1.