

1 PRKAA2

Catalytic subunit of AMP-activated protein kinase (AMPK), an energy sensor protein kinase that plays a key role in regulating cellular energy metabolism. Interesting differential expression of not infected vs infected cells.

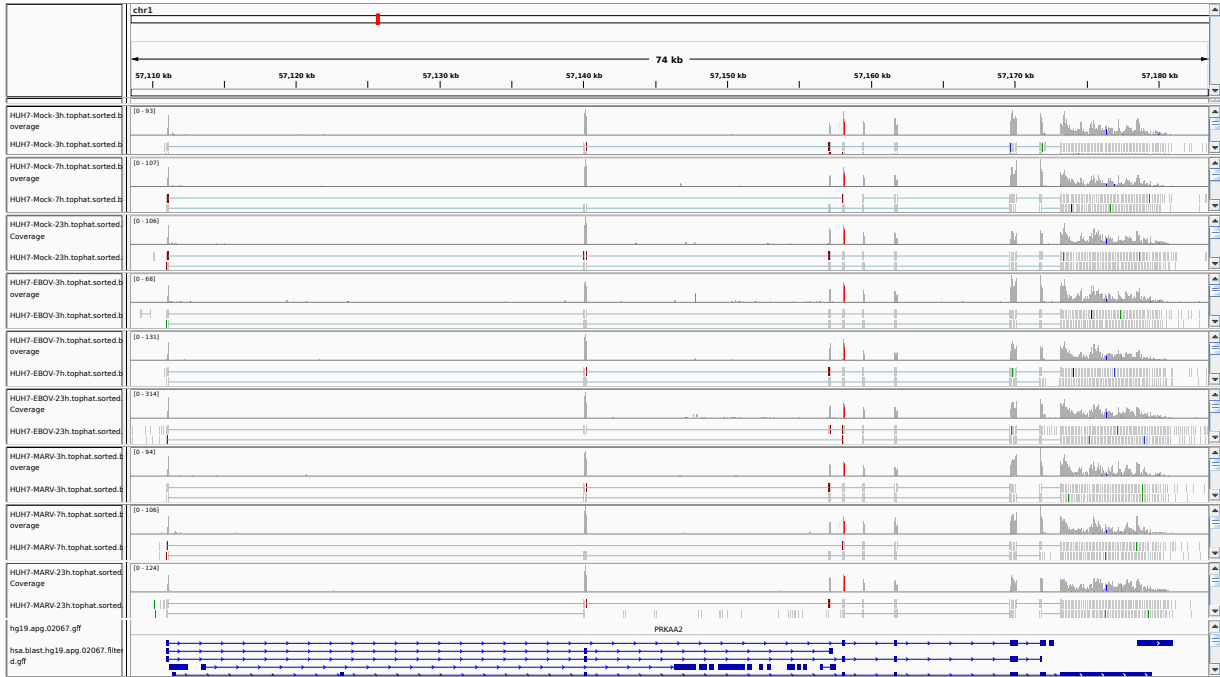


Figure 1: IGV Genome Browser screenshot of gene PRKAA2.

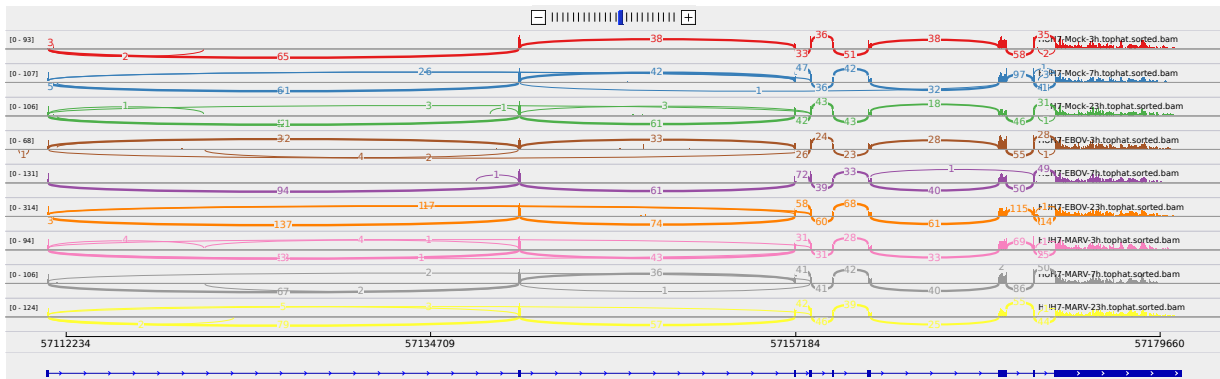


Figure 2: Sashimi plot of gene PRKAA2.

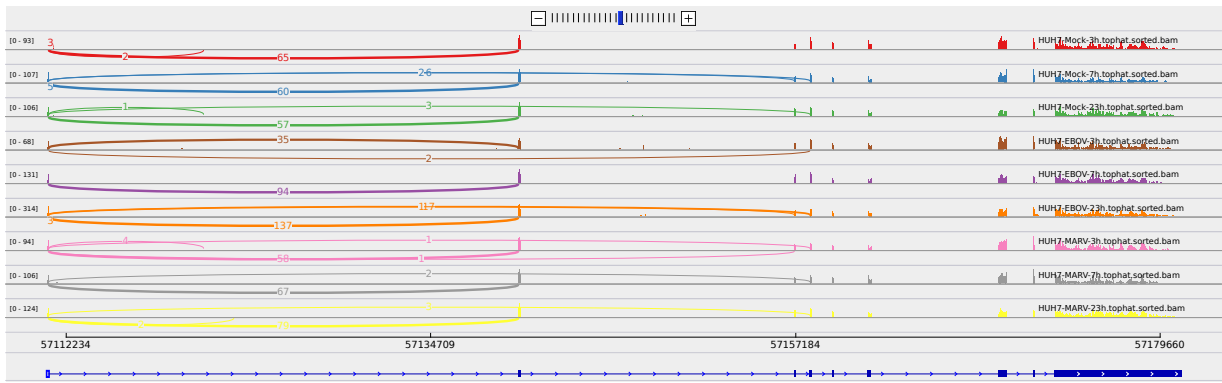


Figure 3: Sashimi plot of gene PRKAA2.

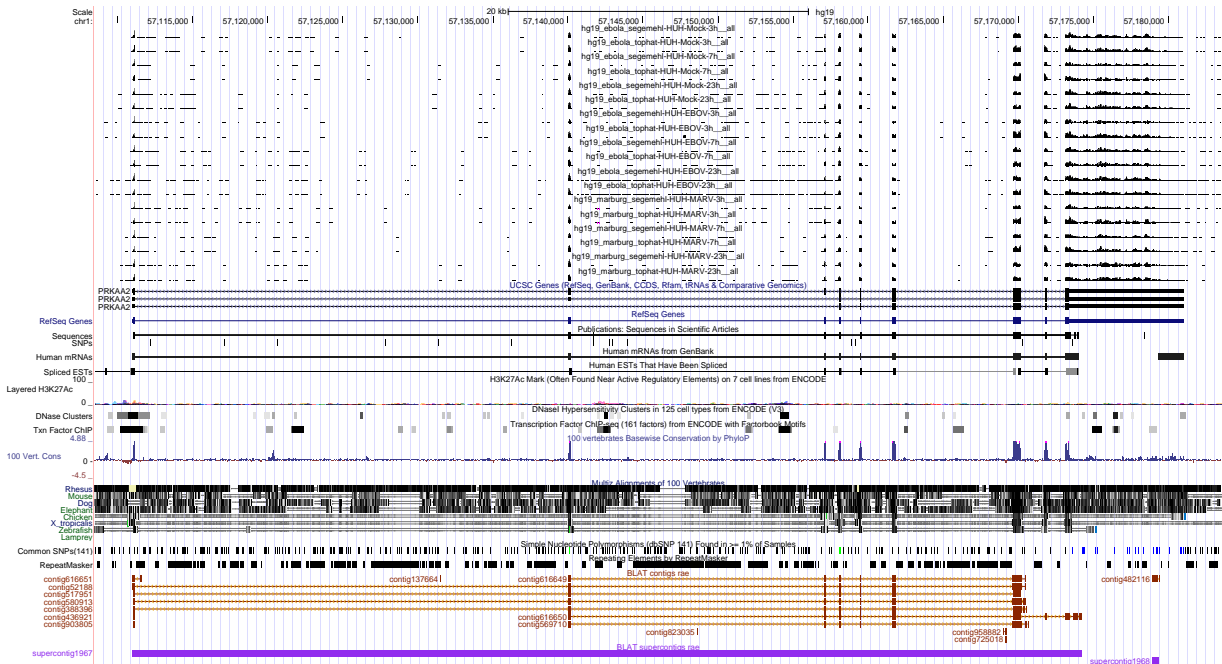


Figure 4: UCSC Genome Browser screenshot of gene PRKAA2.