

# 1 MLL

This gene encodes a transcriptional coactivator that plays an essential role in regulating gene expression during early development and hematopoiesis. Possible alternative splicing.

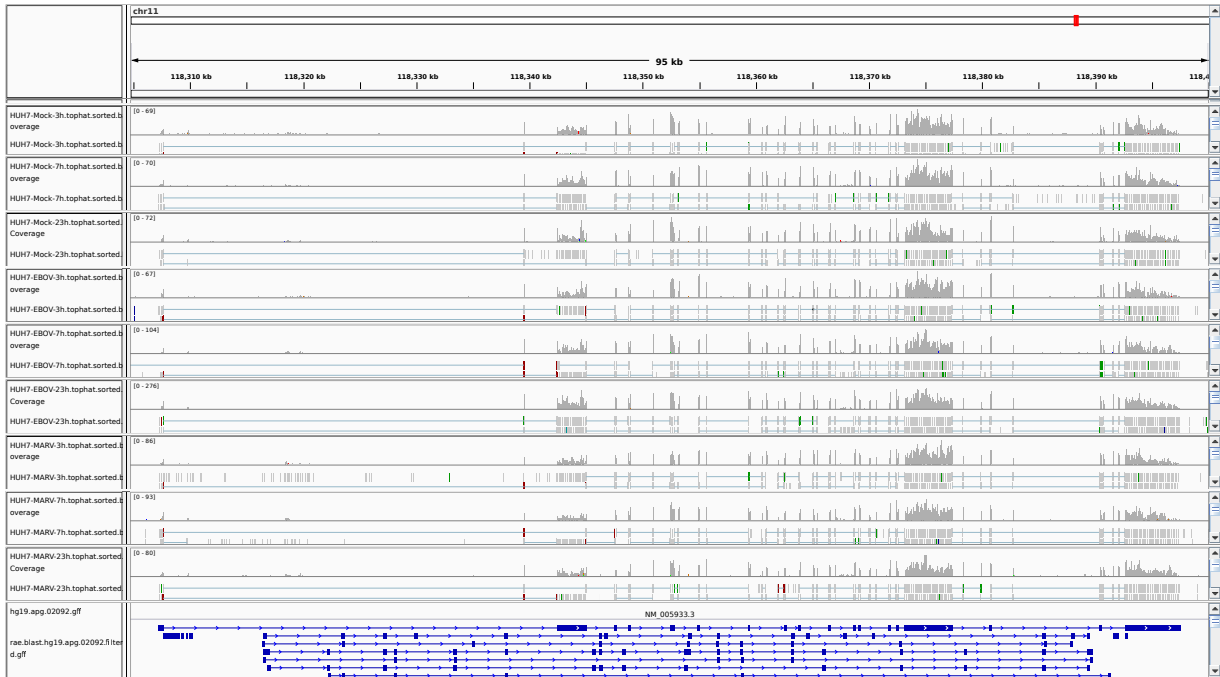


Figure 1: IGV Genome Browser screenshot of gene MLL.

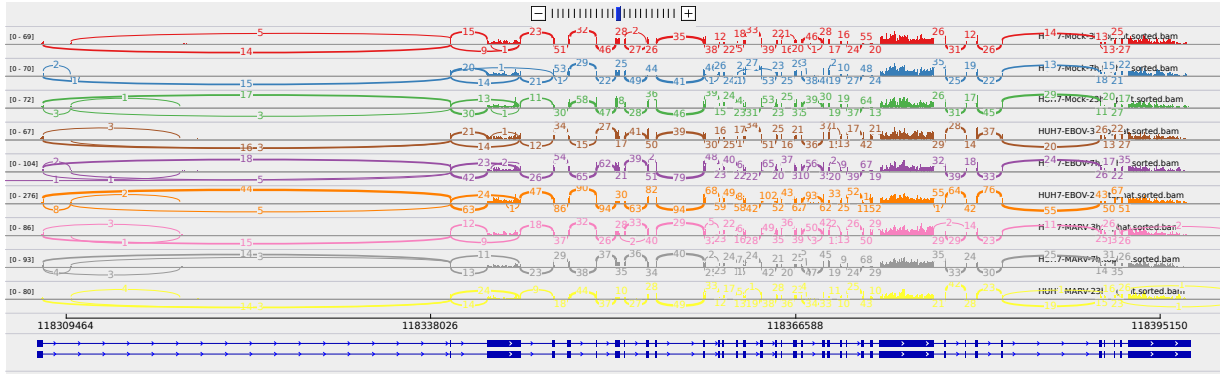


Figure 2: Sashimi plot of gene MLL.

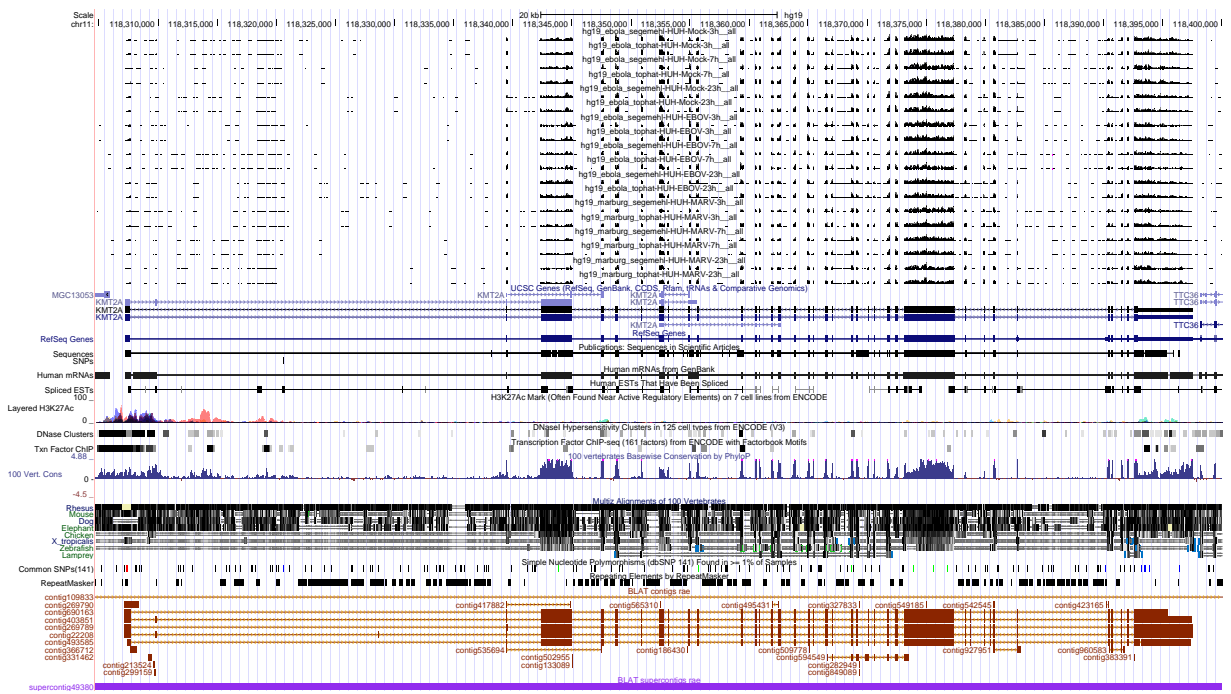


Figure 3: UCSC Genome Browser screenshot of gene MLL.