

# 1 GMCL1

Without a defined function. Possible splicing variant for marburg infected cells in humans (not much frequency).

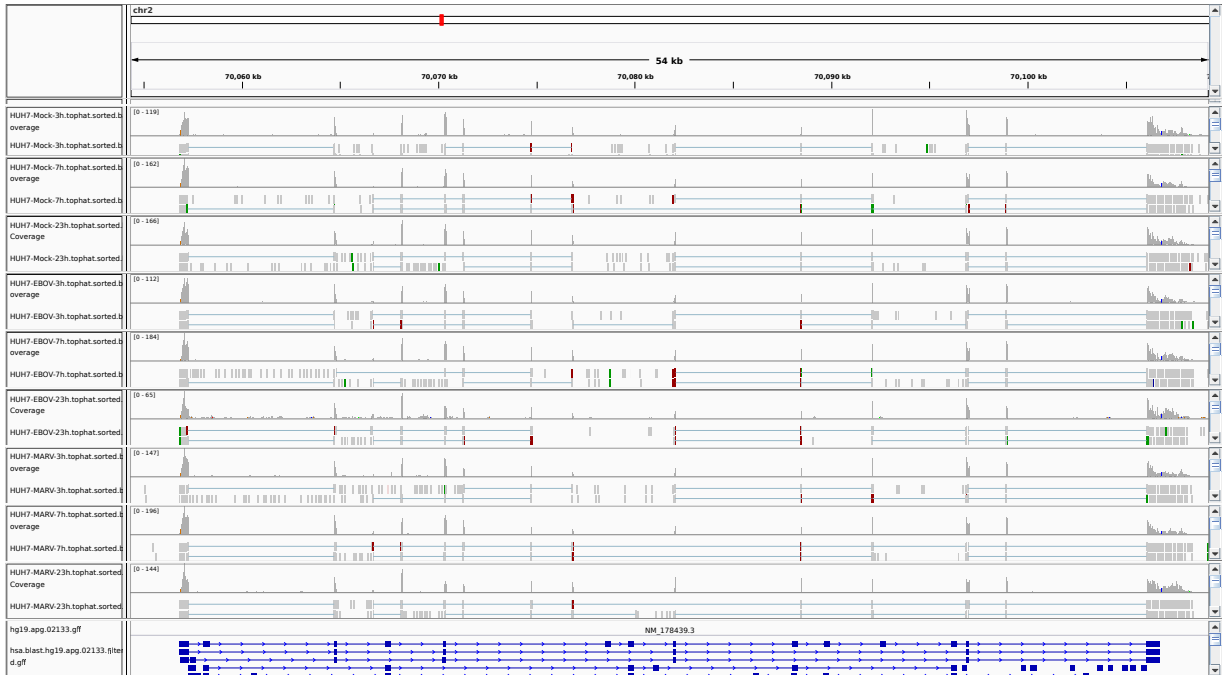


Figure 1: IGV Genome Browser screenshot of gene GMCL1.

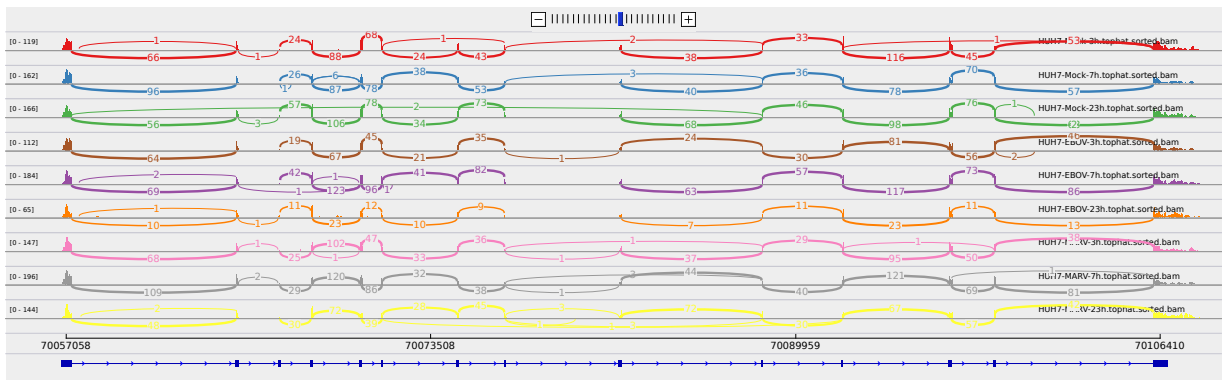


Figure 2: Sashimi plot of gene GMCL1.

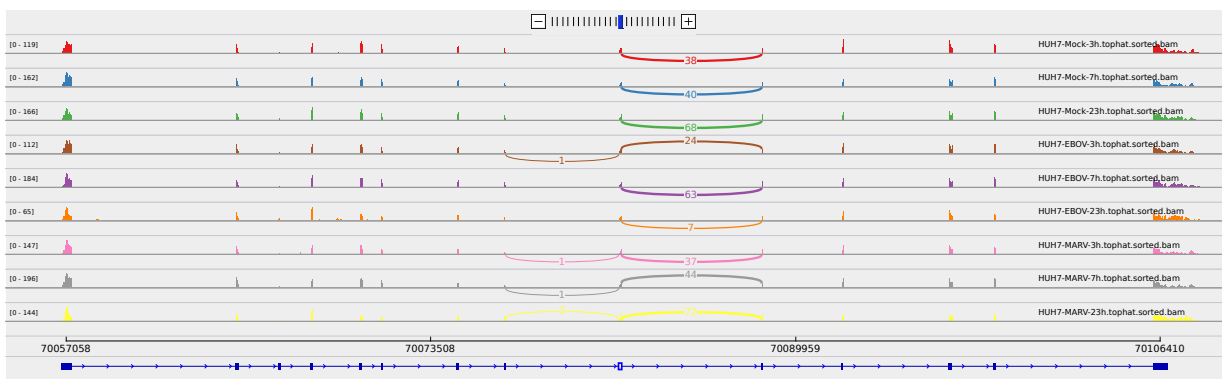


Figure 3: Sashimi plot of gene GMCL1.

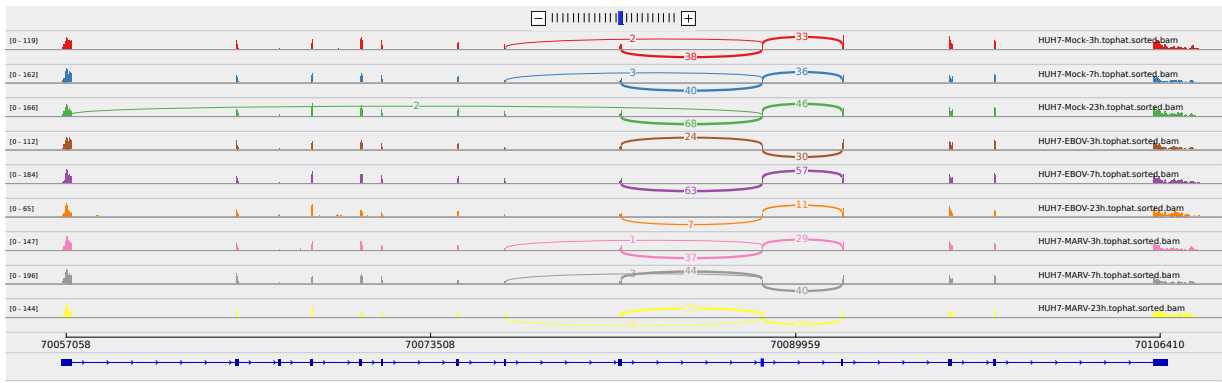


Figure 4: Sashimi plot of gene GMCL1.

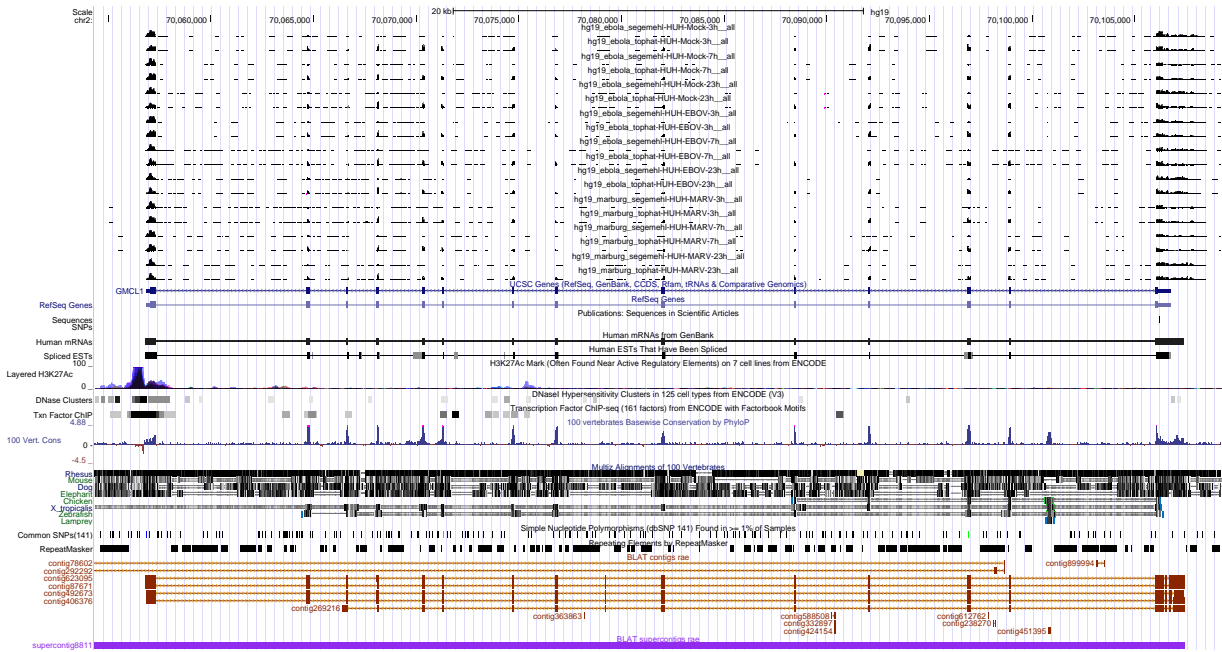


Figure 5: UCSC Genome Browser screenshot of gene GMCL1.