

1 G3BP1

This gene encodes one of the DNA-unwinding enzymes which prefers partially unwound 3'-tailed substrates and can also unwind partial RNA/DNA and RNA/RNA duplexes in an ATP-dependent fashion. The gene expression profile of this gene in bats seems to be independent of infection, contrary to humans.

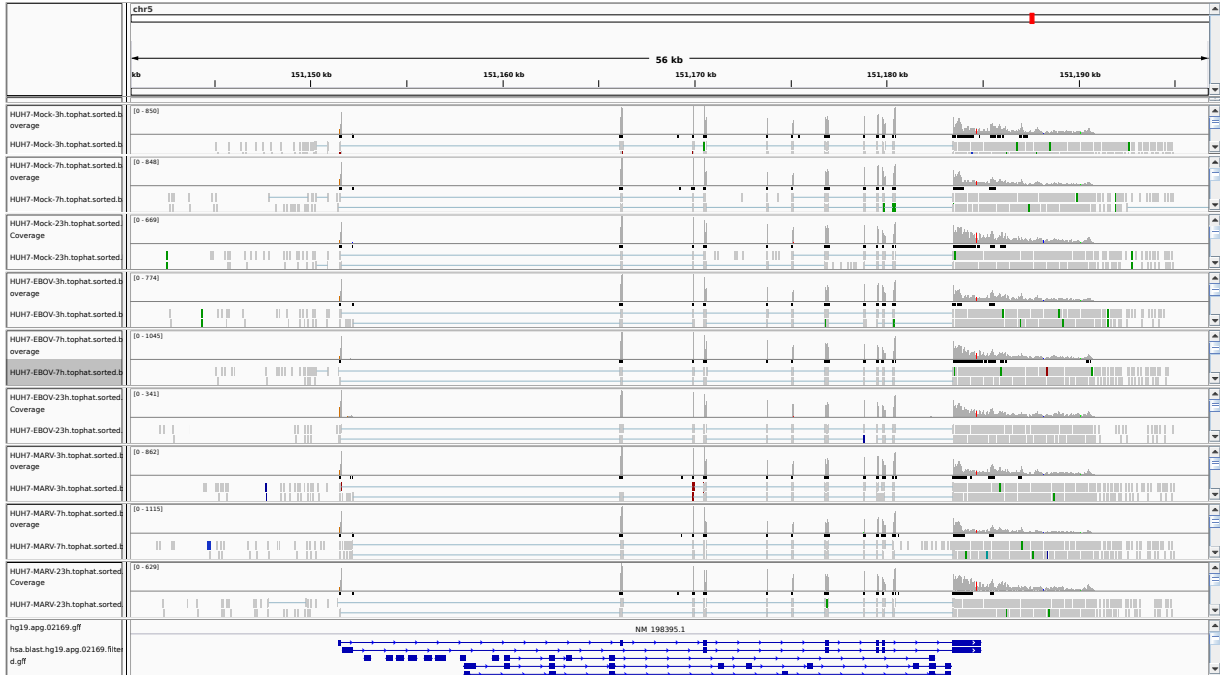


Figure 1: IGV Genome Browser screenshot of gene G3BP1.

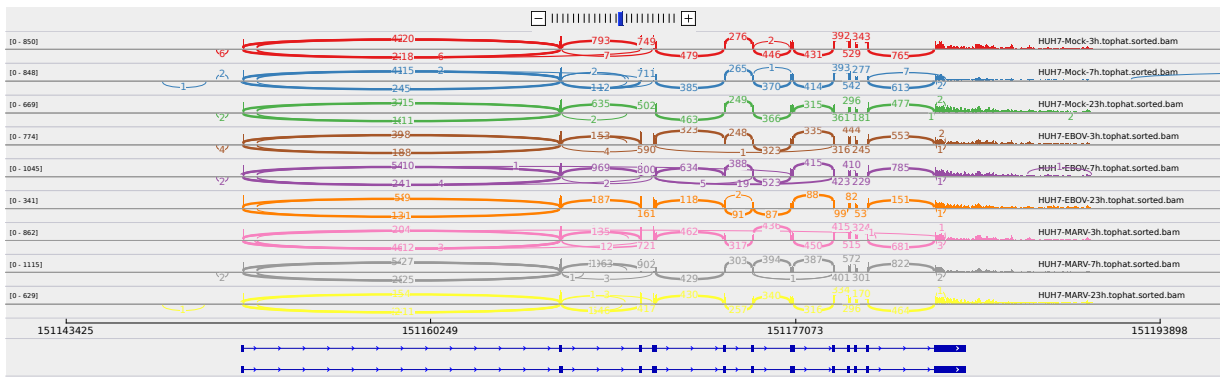


Figure 2: Sashimi plot of gene G3BP1.

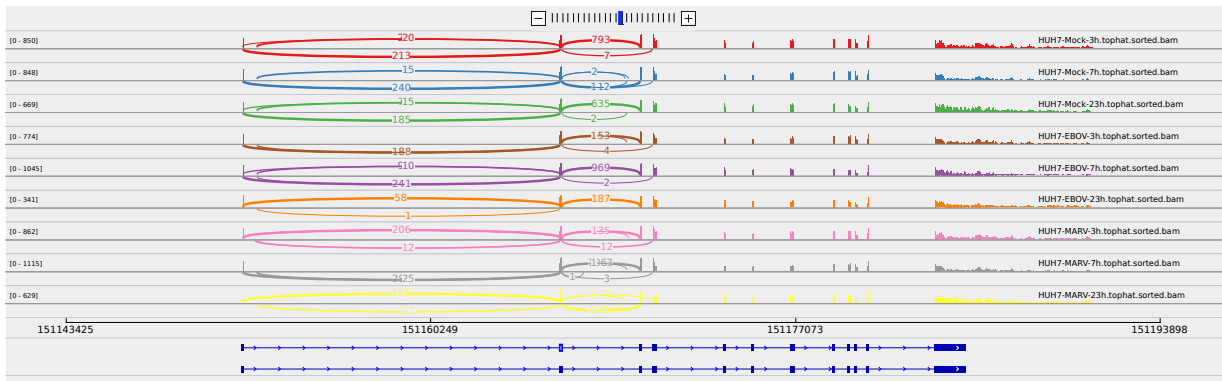


Figure 3: Sashimi plot of gene G3BP1.

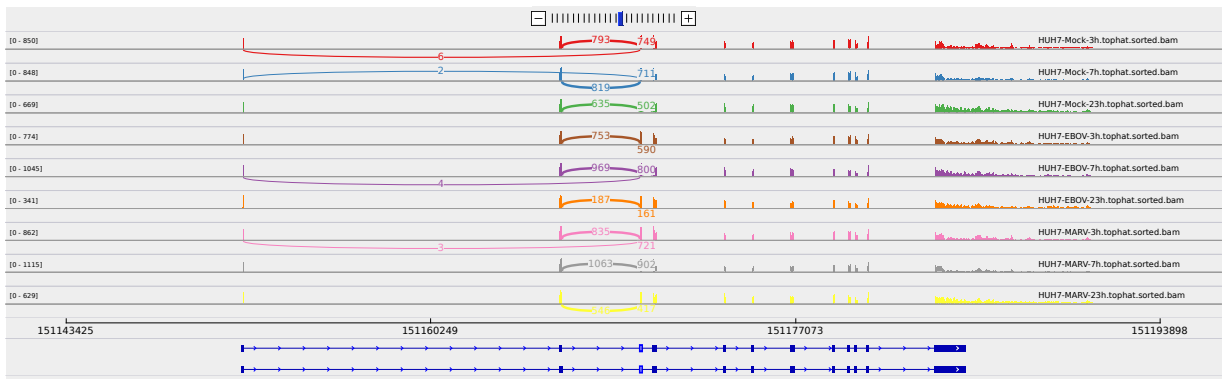


Figure 4: Sashimi plot of gene G3BP1.

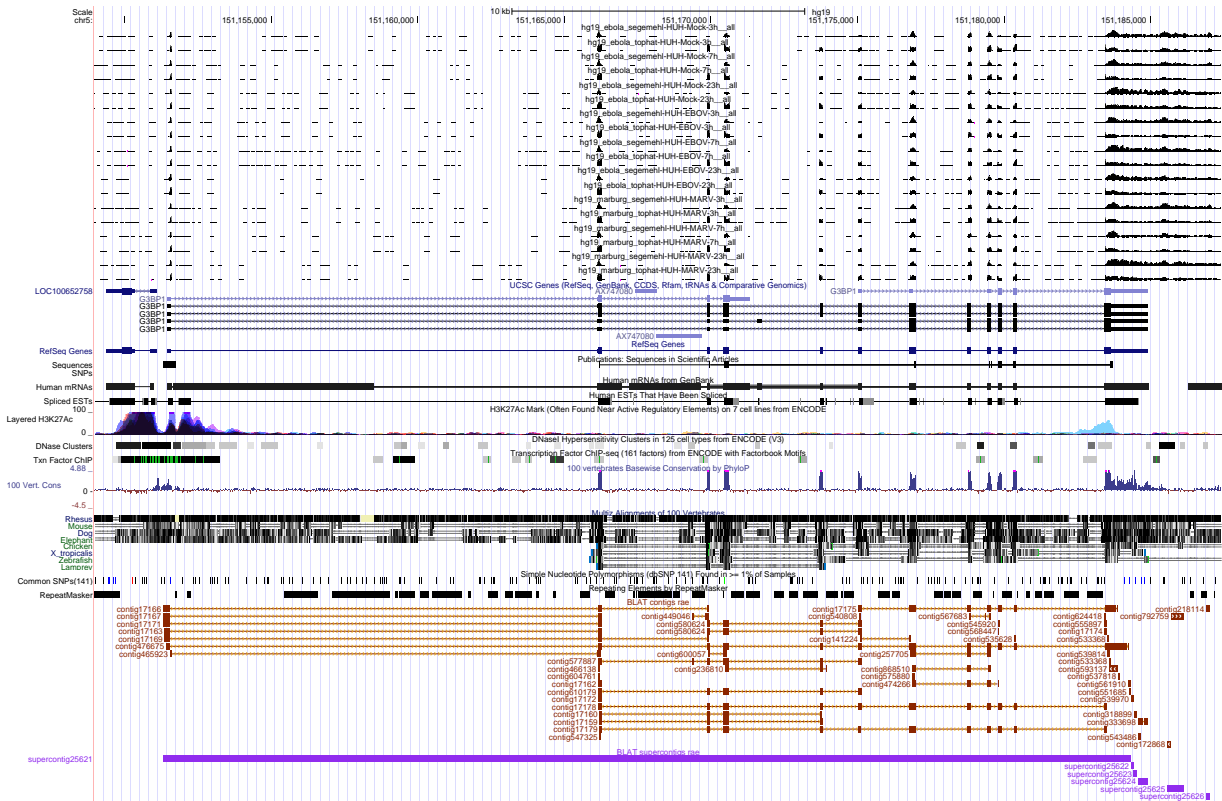


Figure 5: UCSC Genome Browser screenshot of gene G3BP1.