

1 ZBTB38

The protein encoded by this gene is a zinc finger transcriptional activator that binds methylated DNA. Alternative splicing with specific pattern in 23hEBOV samples. Differential expression in infected cells.

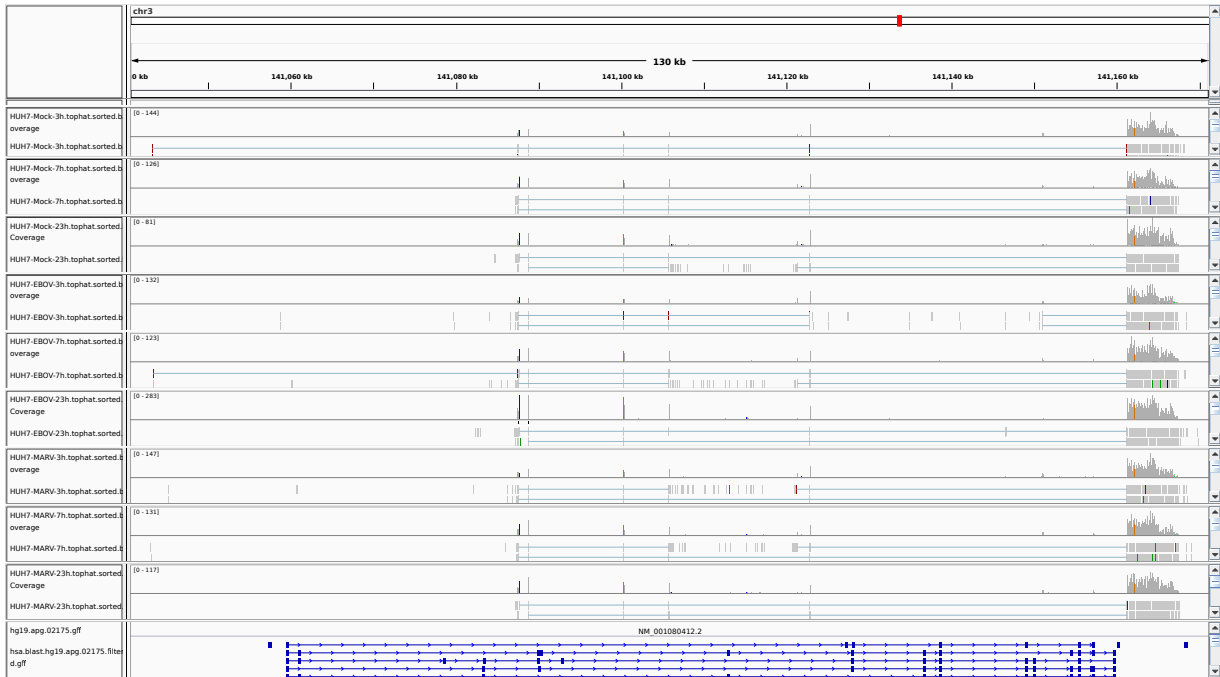


Figure 1: IGV Genome Browser screenshot of gene ZBTB38.

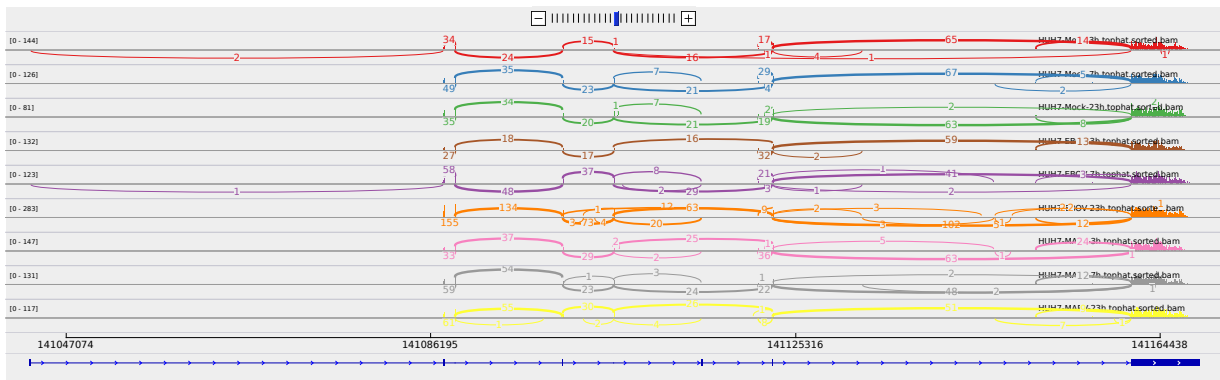


Figure 2: Sashimi plot of gene ZBTB38.

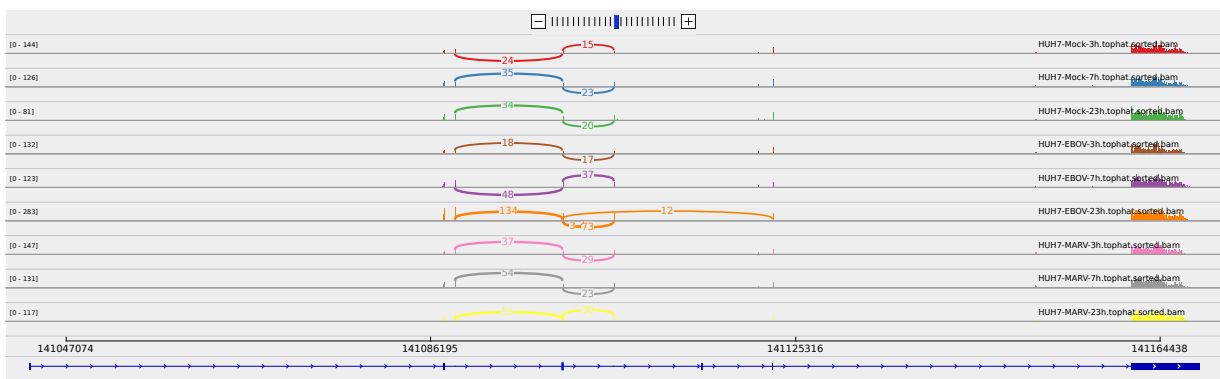


Figure 3: Sashimi plot of gene ZBTB38.

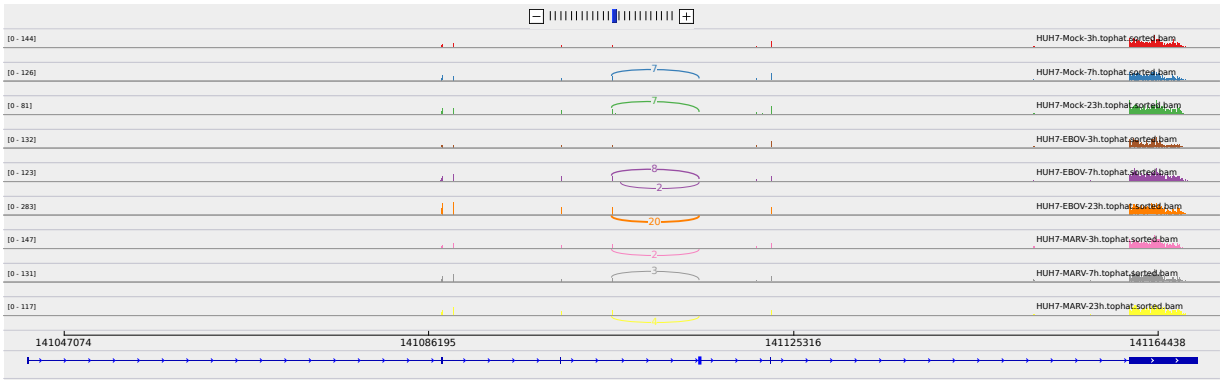


Figure 4: Sashimi plot of gene ZBTB38.

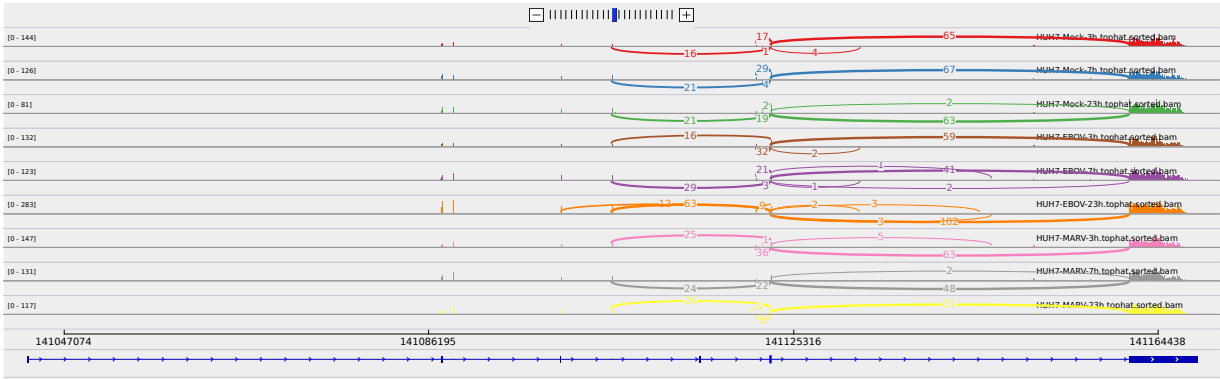


Figure 5: Sashimi plot of gene ZBTB38.

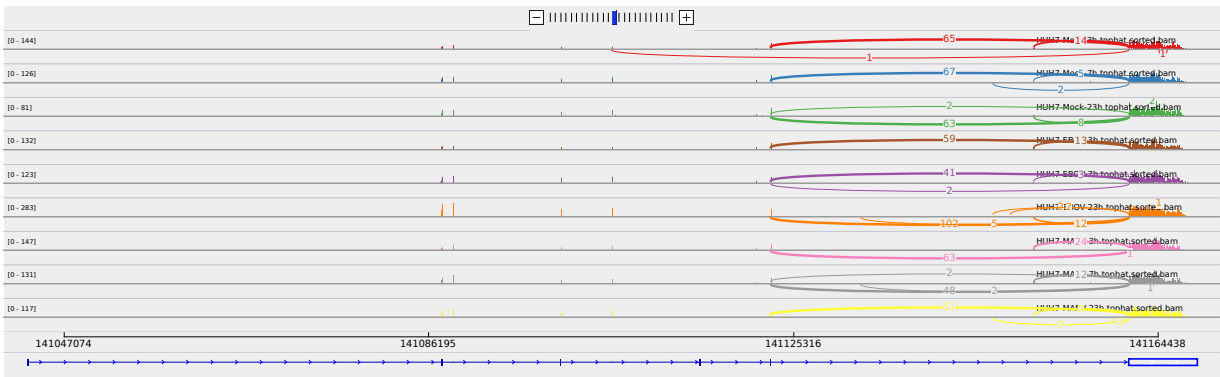


Figure 6: Sashimi plot of gene ZBTB38.

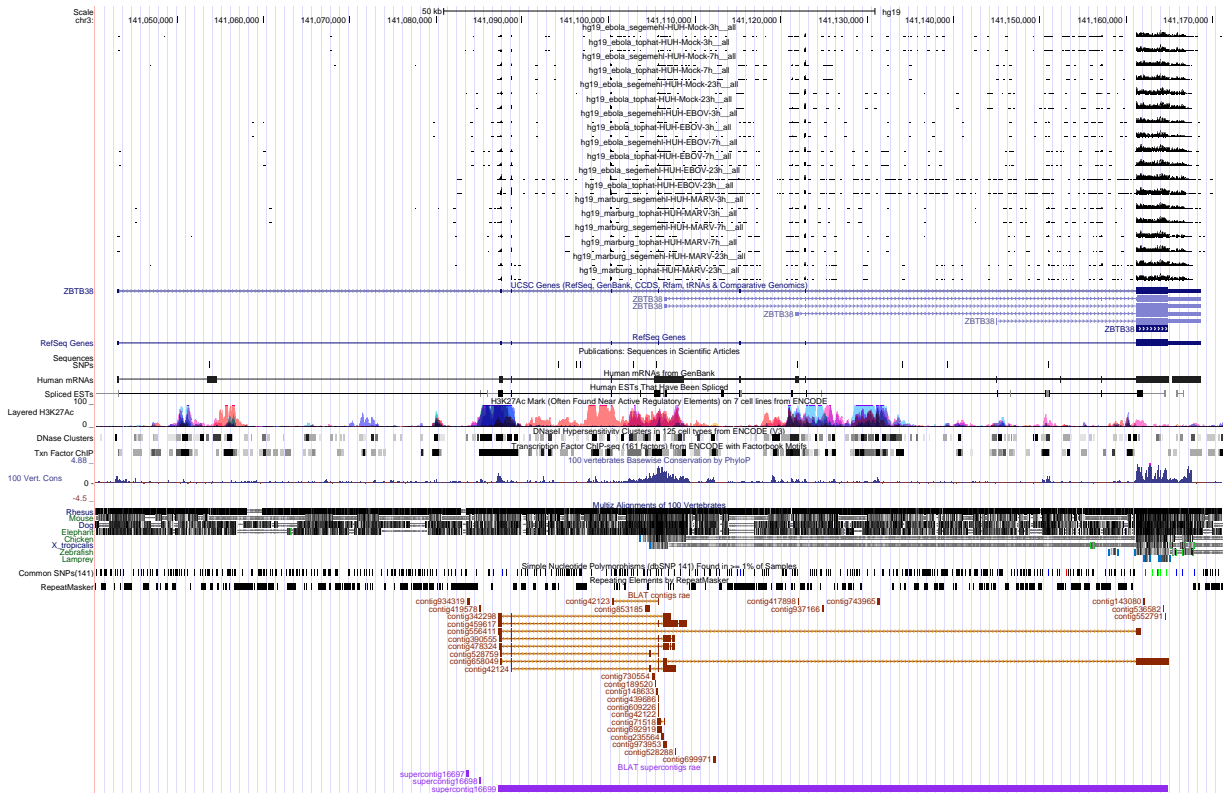


Figure 7: UCSC Genome Browser screenshot of gene ZBTB38.