

# 1 NEU1

Lysosomal enzyme that cleaves terminal sialic acid residues from substrates such as glycoproteins and glycolipids.

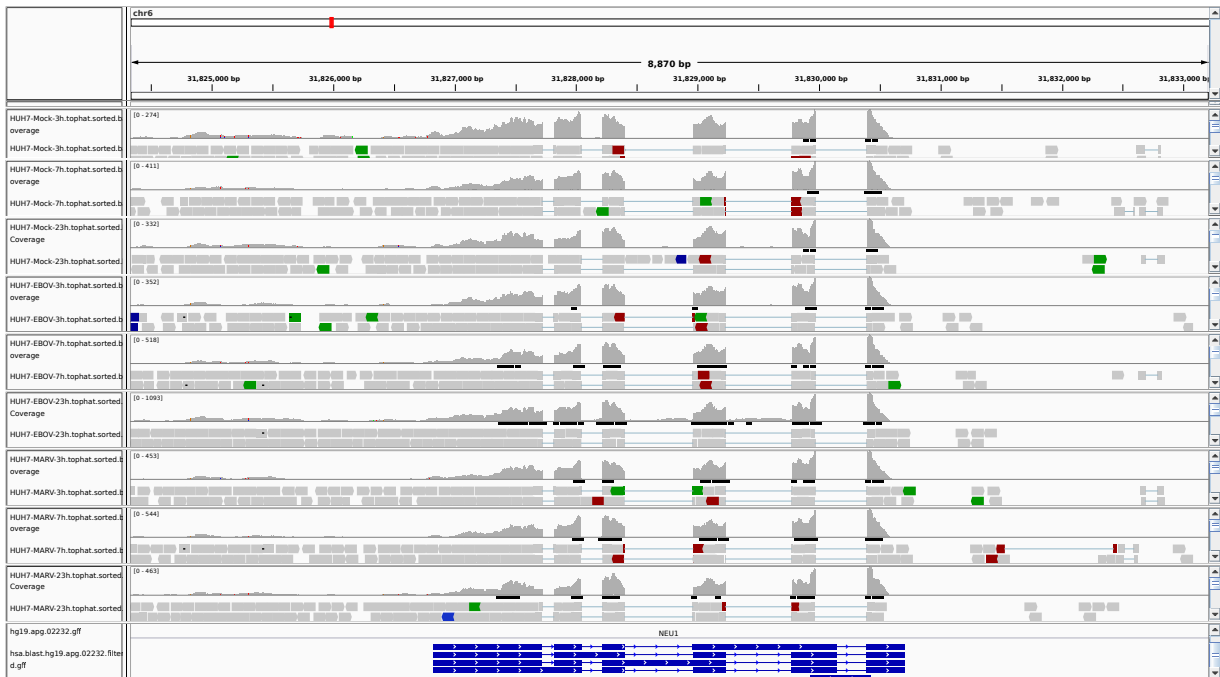


Figure 1: IGV Genome Browser screenshot of gene NEU1.

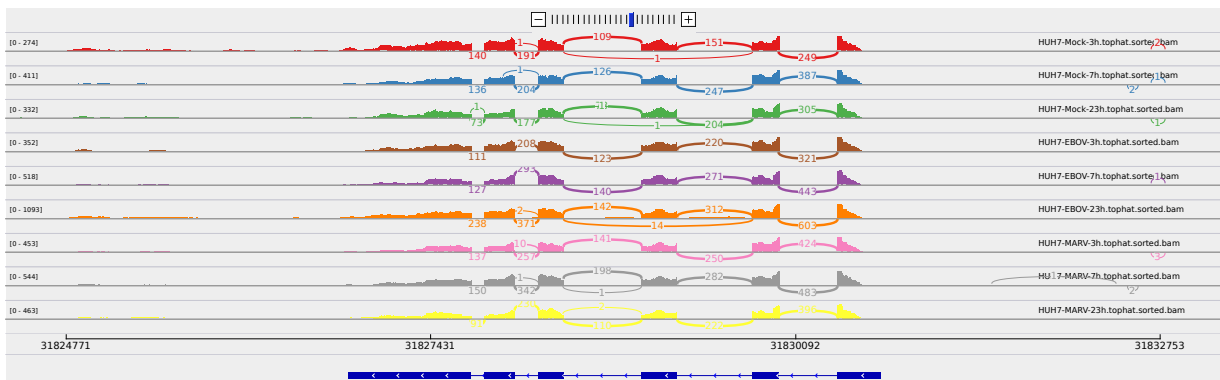


Figure 2: Sashimi plot of gene NEU1.

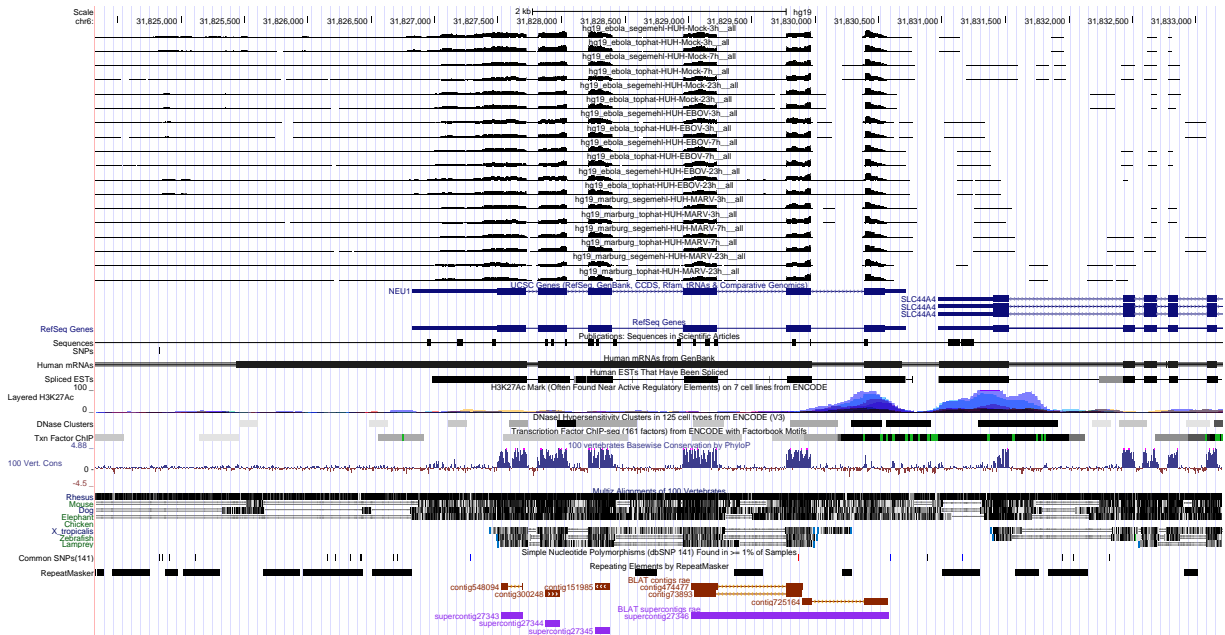


Figure 3: UCSC Genome Browser screenshot of gene NEU1.