

# 1 SPRY1

FROM UNIPROT: May function as an antagonist of fibroblast growth factor (FGF) pathways and may negatively modulate respiratory organogenesis.

This gene is expressed in human and bat in all different probes. In human it is upregulated after 7h and downregulated after 23h in Ebola and Marburg infected probes. However, in bat after 7h it is downregulated in the Ebola infected probe, but upregulated in the Marburg infected probe.

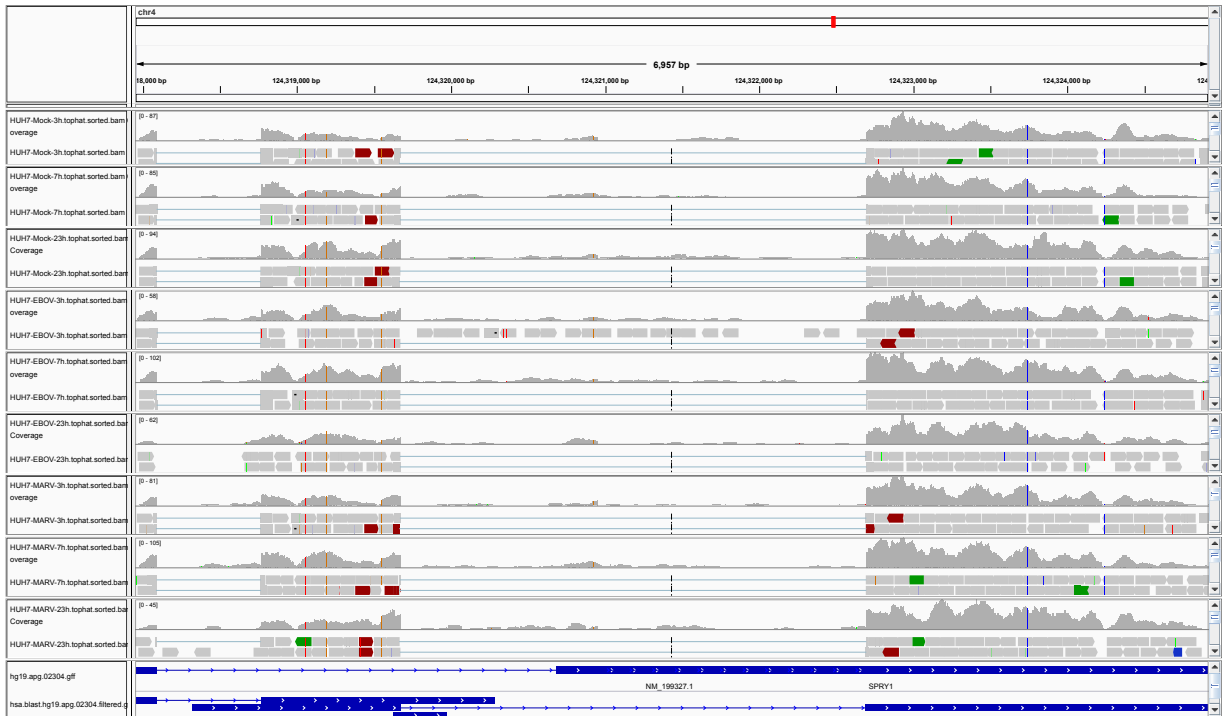


Figure 1: IGV Genome Browser screenshot of gene SPRY1.

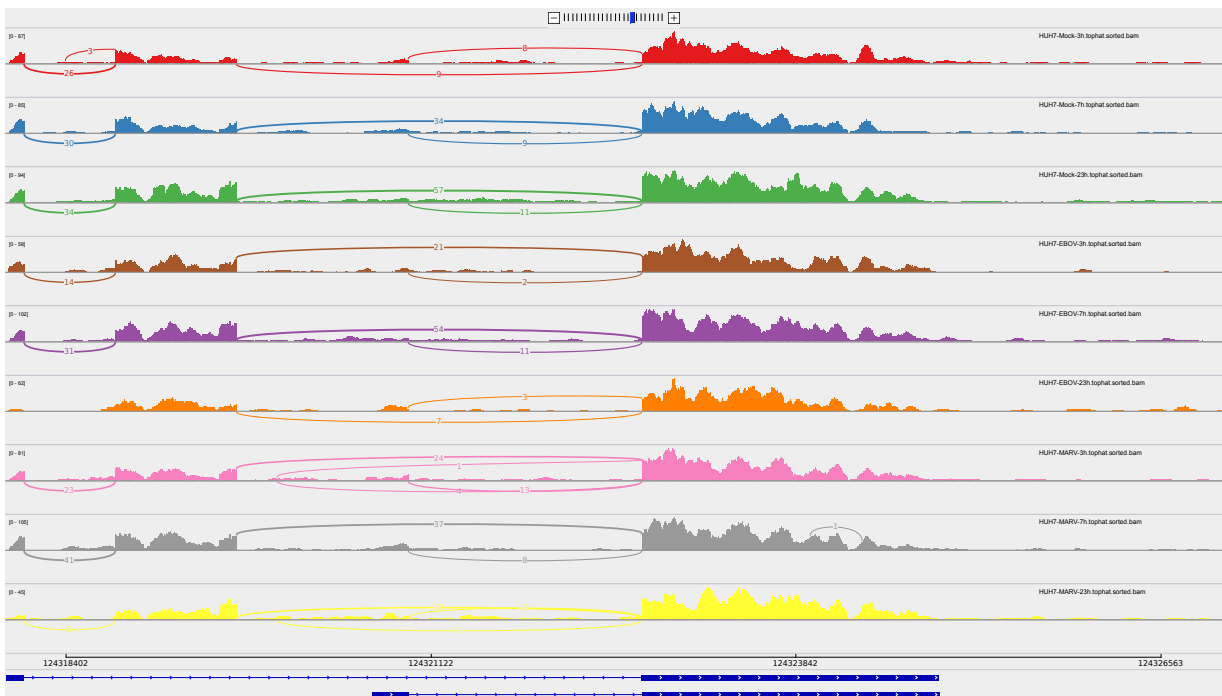


Figure 2: Sashimi plot of gene SPRY1.

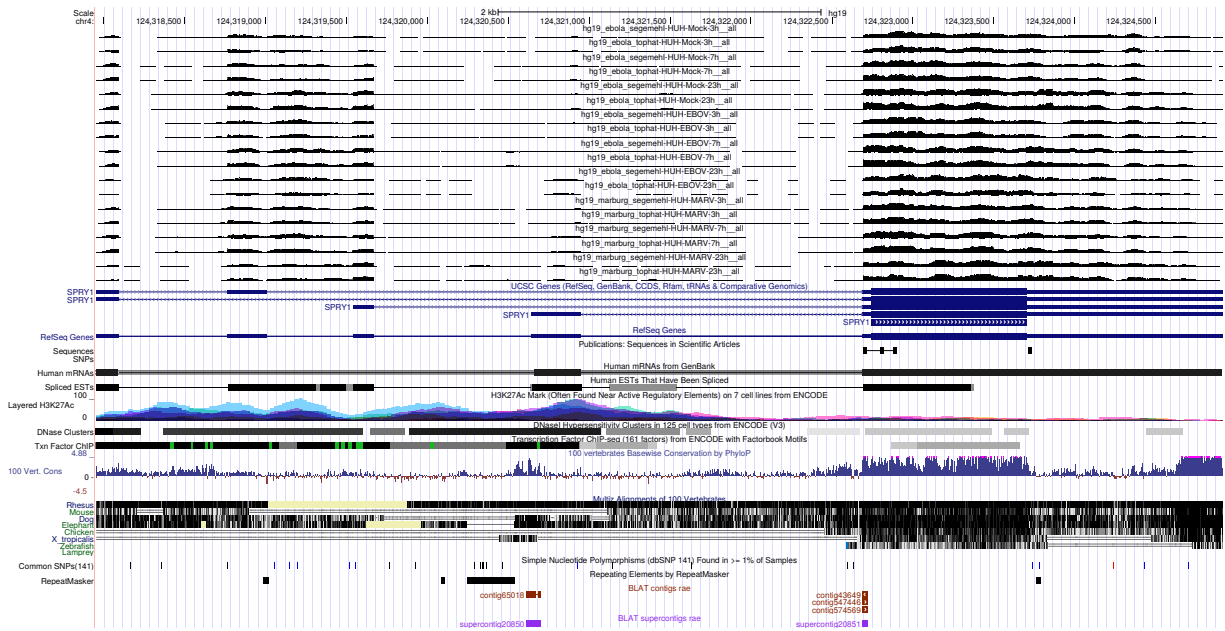


Figure 3: UCSC Genome Browser screenshot of gene *SPRY1*.