

# 1 LPP

The encoded protein localizes to the cell periphery in focal adhesions and may be involved in cell-cell adhesion and cell motility. Gene too big for IGV view format, results need to be recheck with another tool.

Figure 1: IGV Genome Browser screenshot of gene LPP.

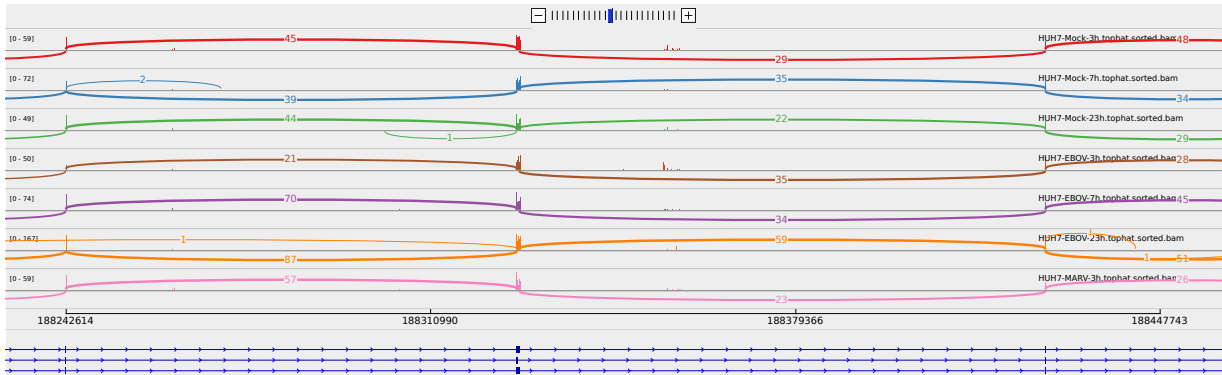


Figure 2: Sashimi plot of gene LPP.

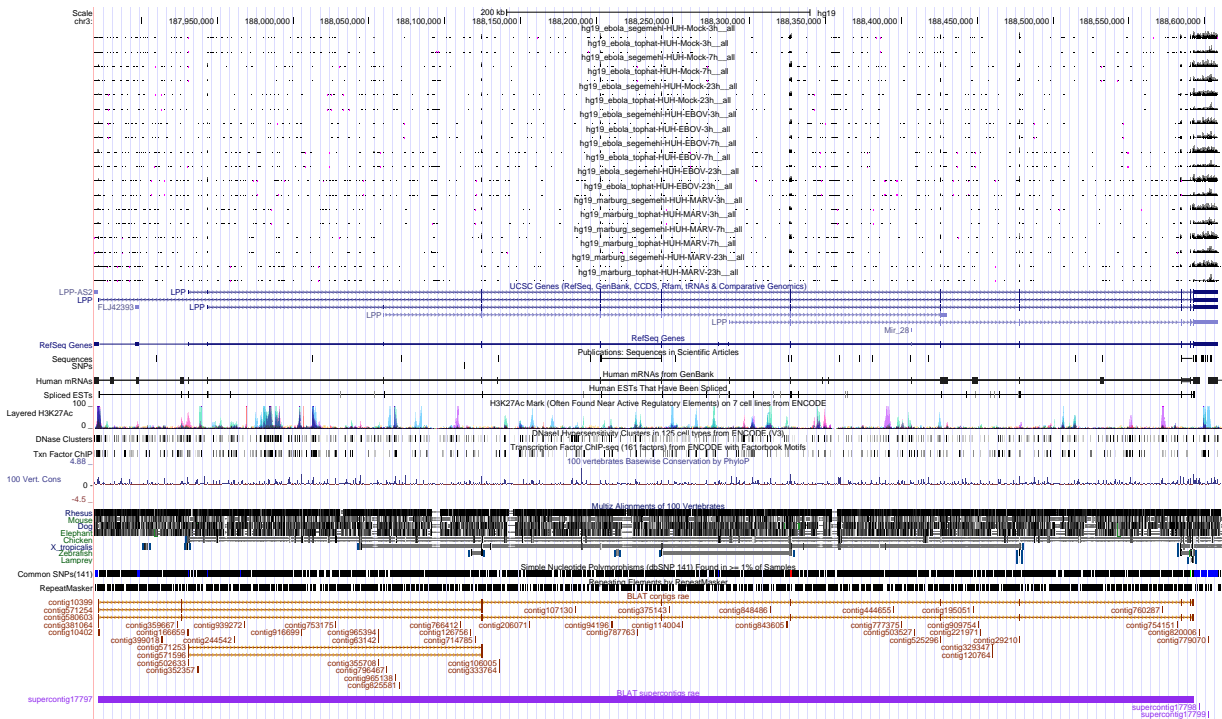


Figure 3: UCSC Genome Browser screenshot of gene LPP.