

1 LAMB1

Binding to cells via a high affinity receptor, laminin is thought to mediate the attachment, migration and organization of cells into tissues during embryonic development by interacting with other extracellular matrix components. The annotation seems incomplete. Extra sashimi plots to see probable differential splicing and extra exons.

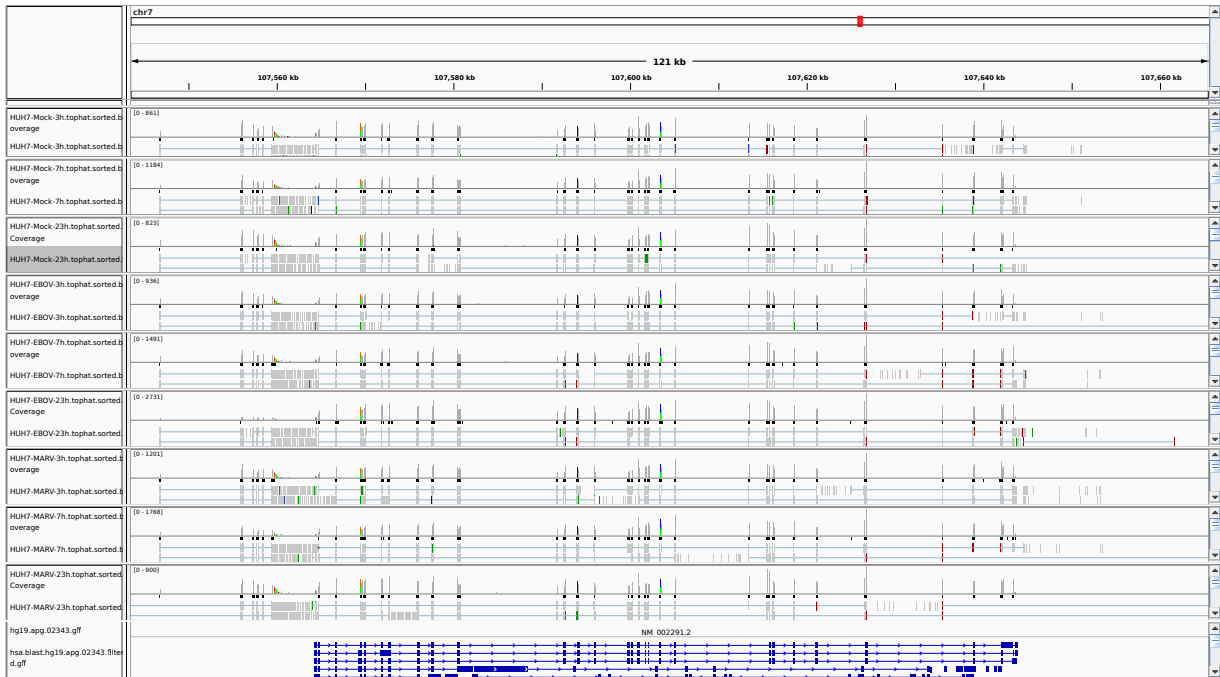


Figure 1: IGV Genome Browser screenshot of gene LAMB1.

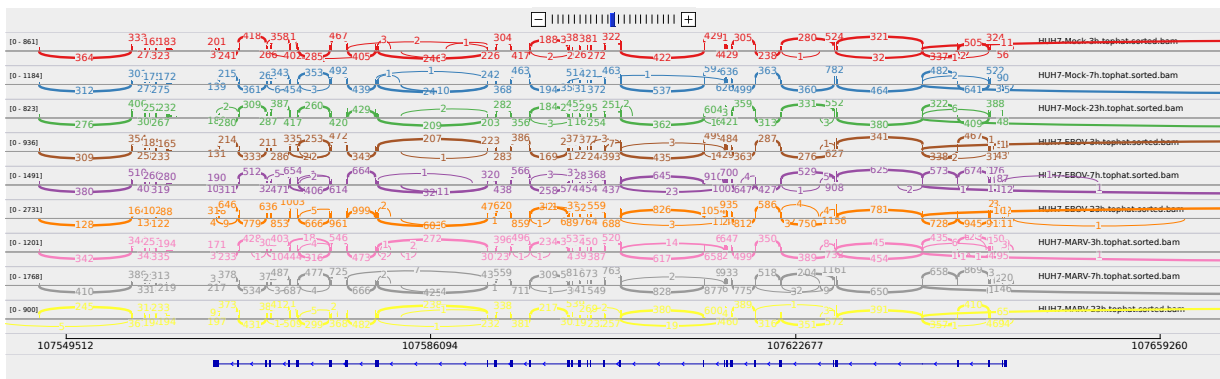


Figure 2: Sashimi plot of gene LAMB1.

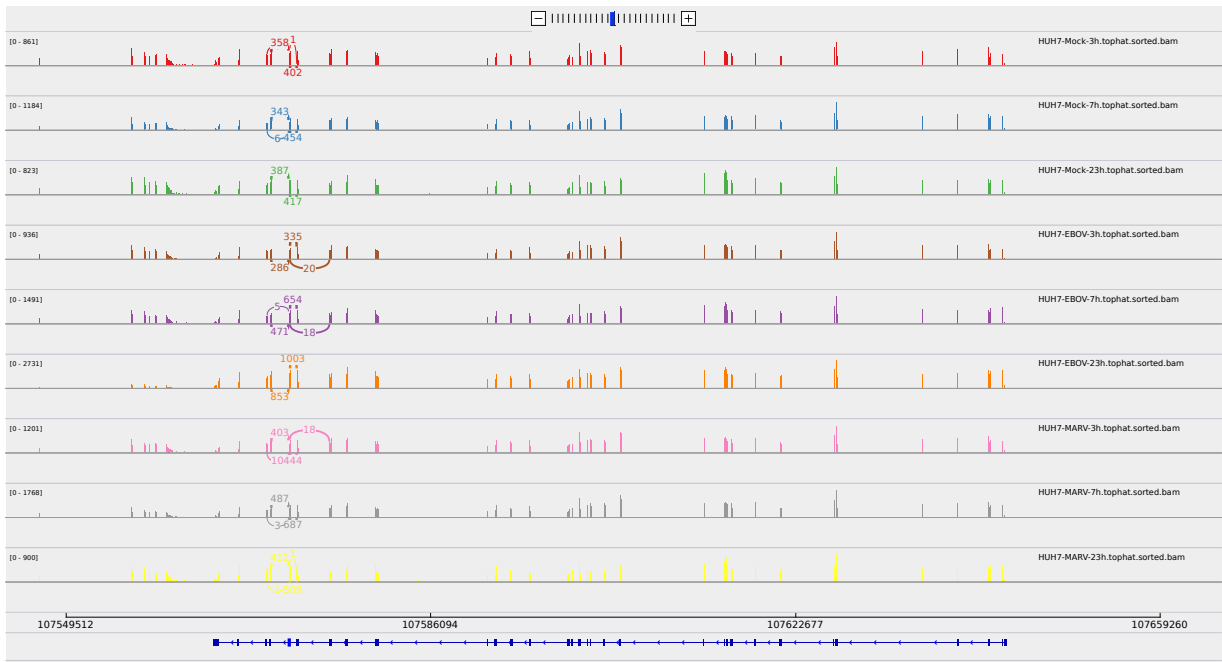


Figure 3: Sashimi plot of gene LAMB1.

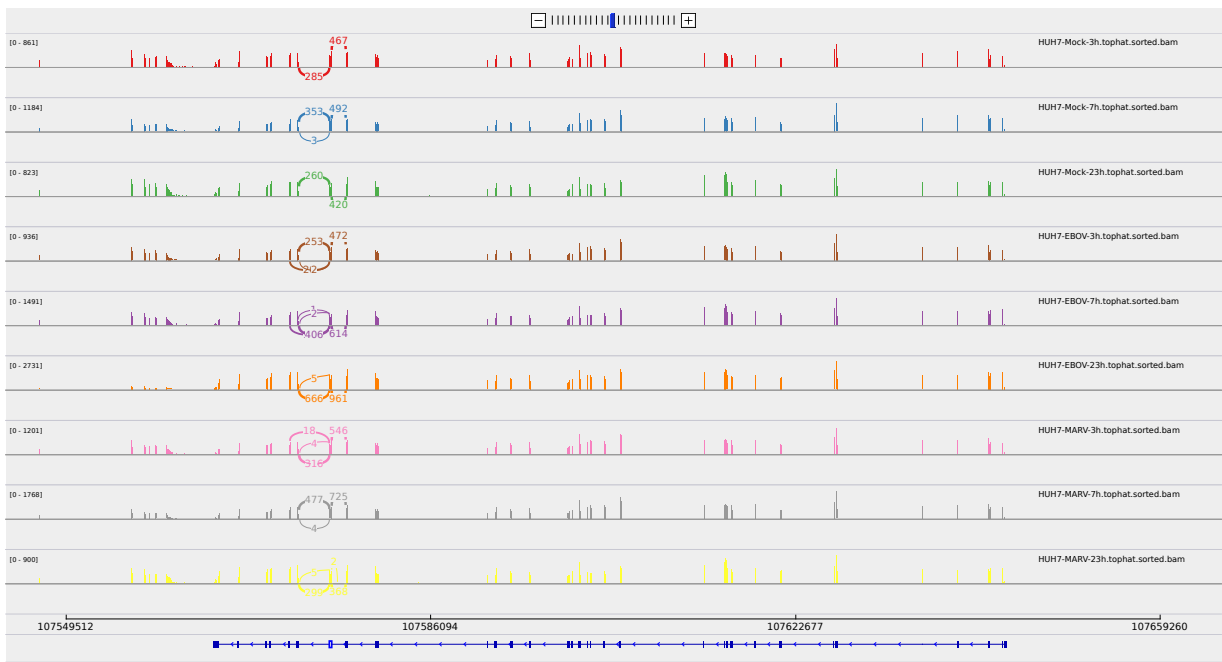


Figure 4: Sashimi plot of gene LAMB1.

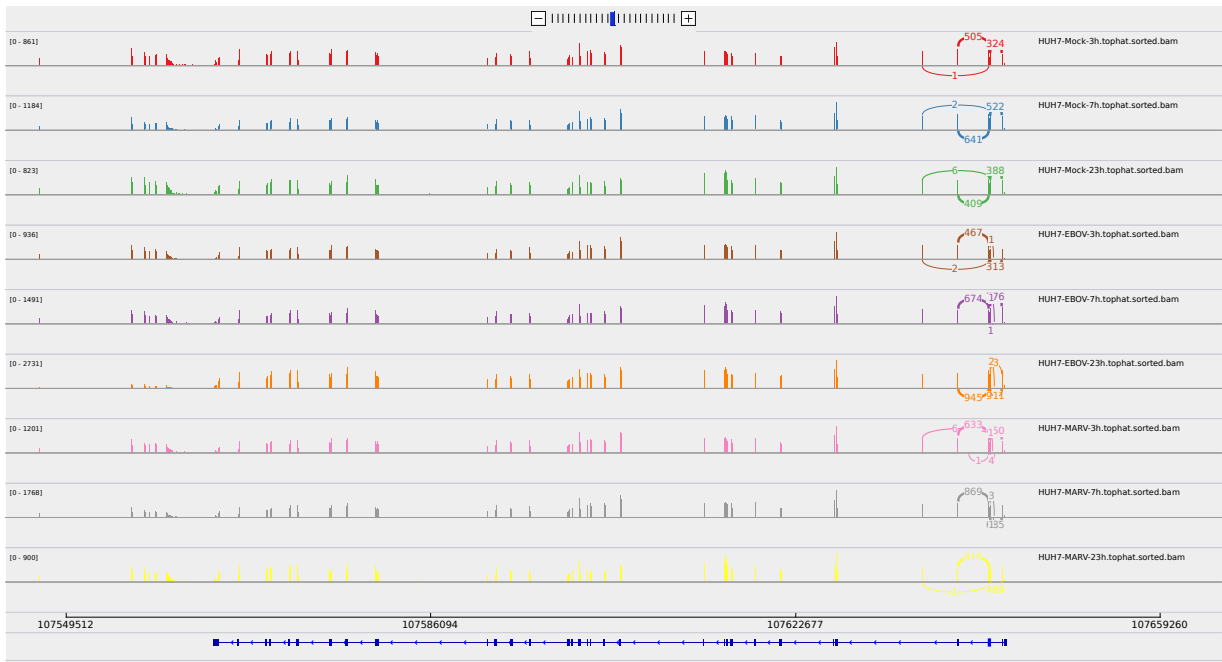


Figure 5: Sashimi plot of gene LAMB1.

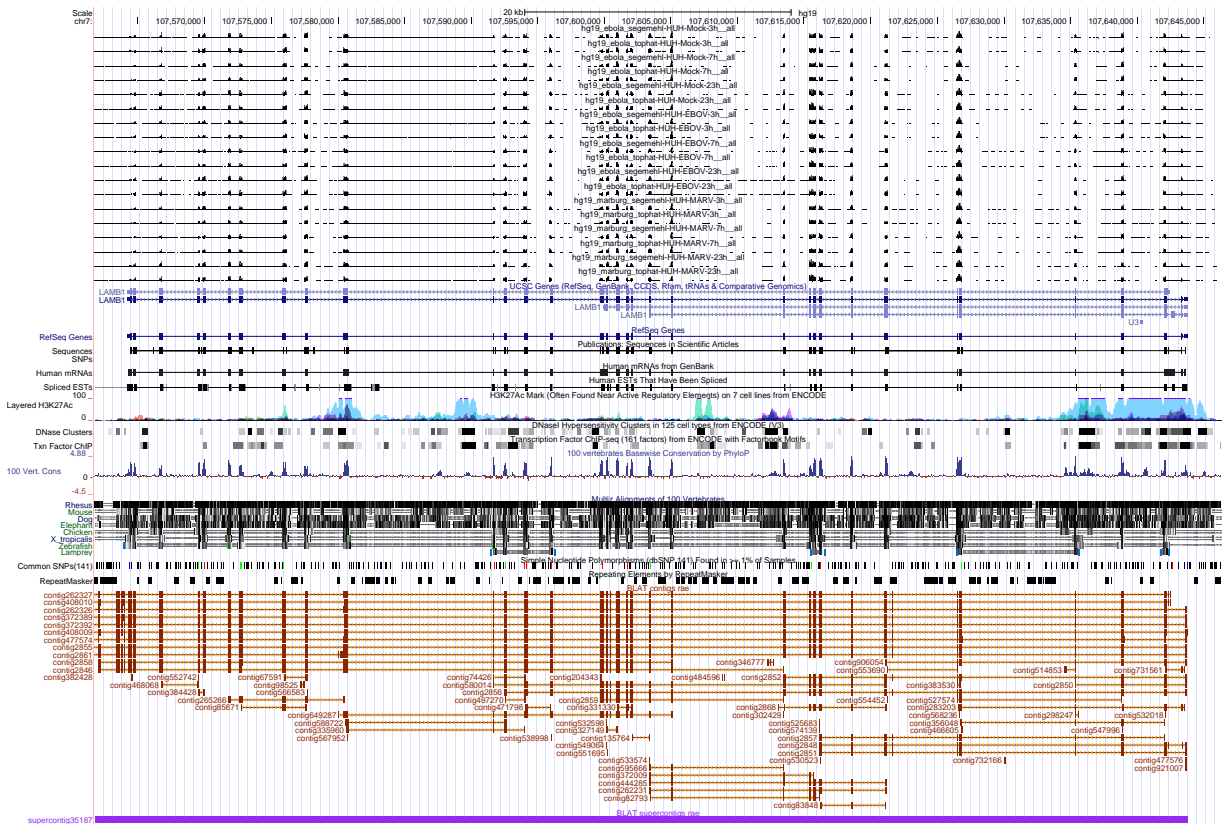


Figure 6: UCSC Genome Browser screenshot of gene LAMB1.