

1 NUCKS1

The nuclear casein kinase and cyclin-dependent kinase substrate 1 gene is involved in poly(A) RNA binding. It seems to be downregulated after 23 hours of Ebola and Marburg virus infection in humans, and also after 23 hours of Ebola infection in bats.

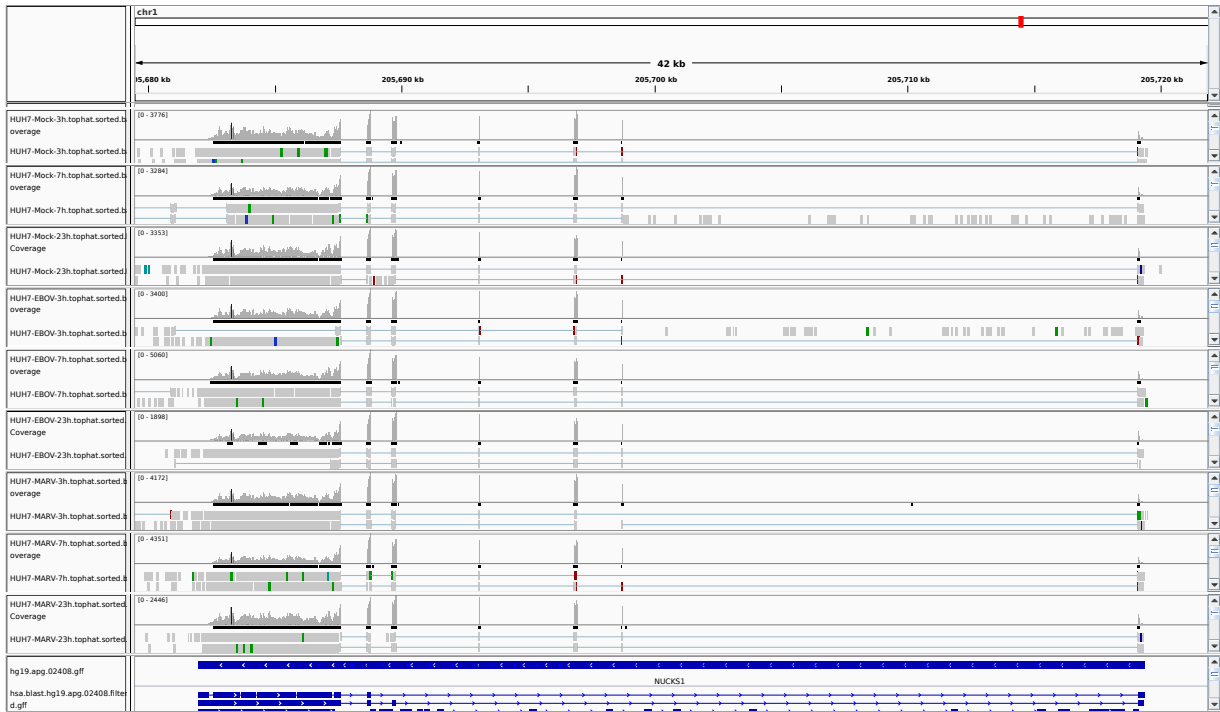


Figure 1: IGV Genome Browser screenshot of gene NUCKS1.

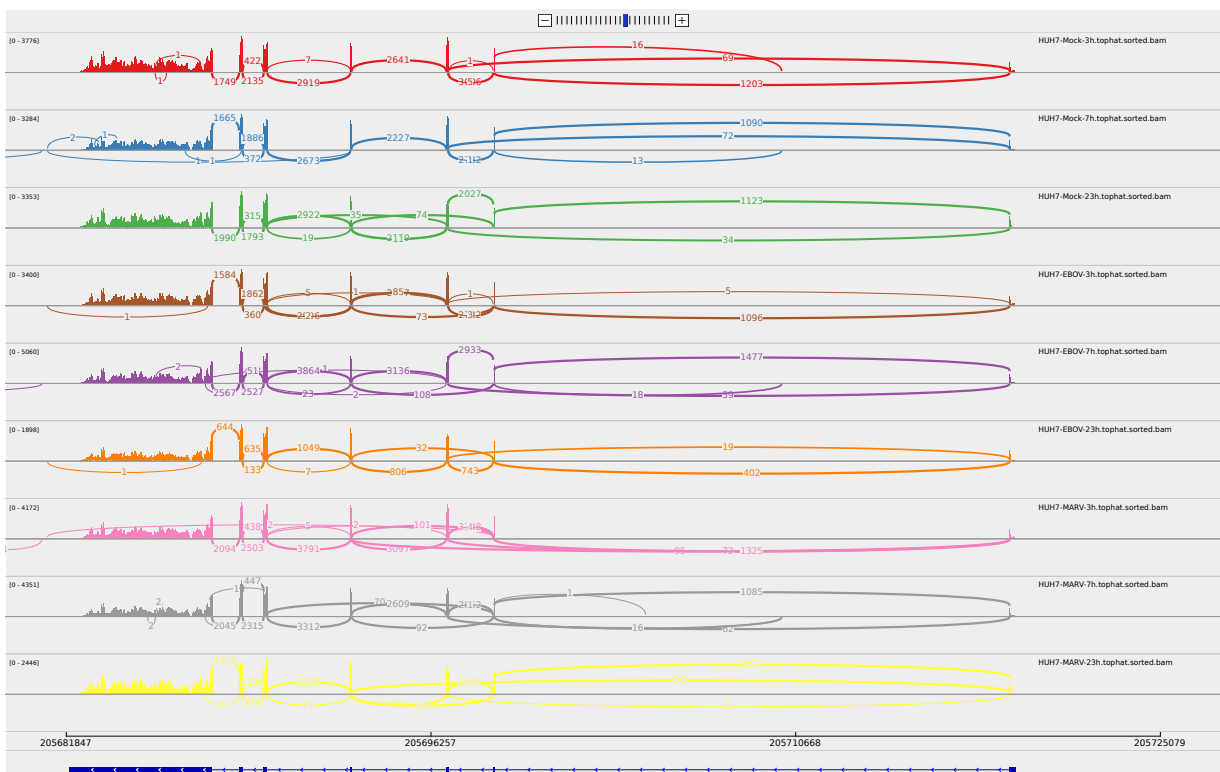


Figure 2: Sashimi plot of gene NUCKS1.

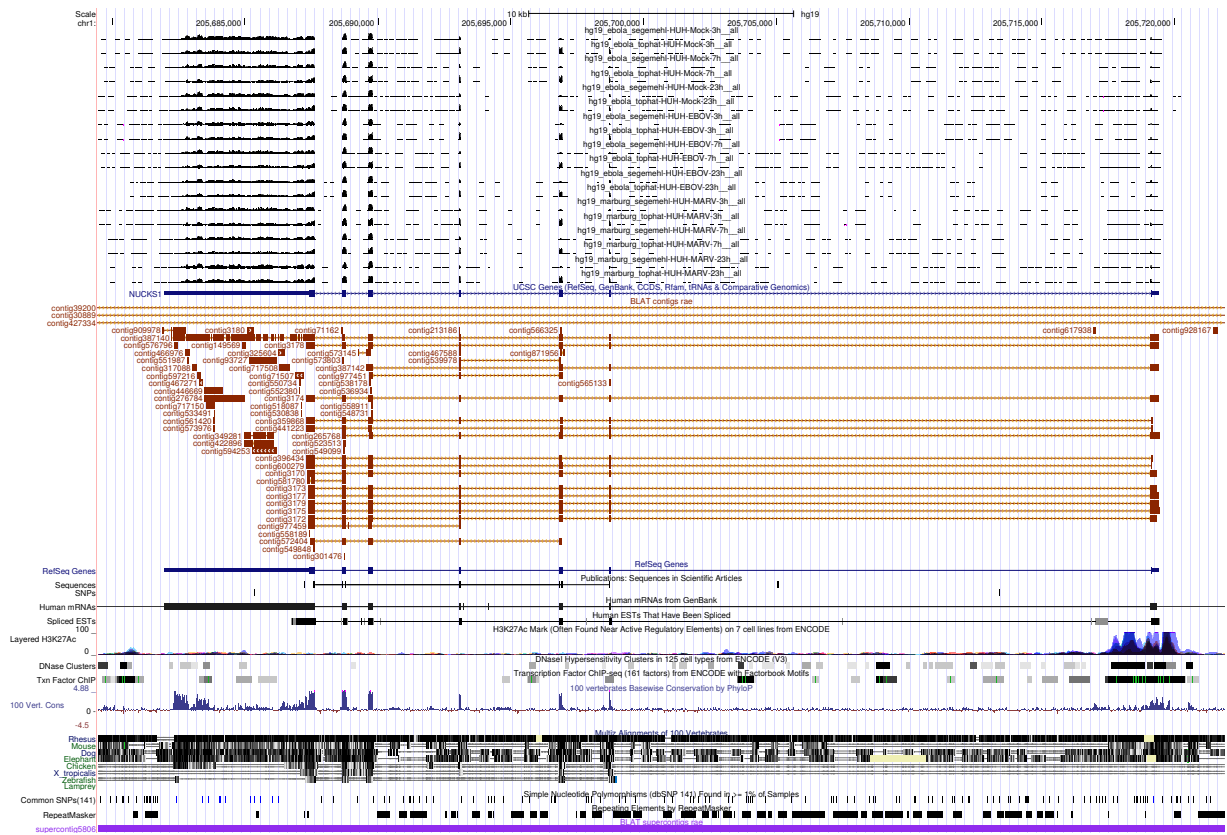


Figure 3: UCSC Genome Browser screenshot of gene NUCKS1.