

1 EIF2A

EIF2A is a 65-kD protein that catalyzes the formation of puromycin-sensitive 80S preinitiation complexes

No abnormalities have been observed. The gene is slightly downregulated in Ebola and Marburg samples from human cells. The ENSEMBL annotation misses about 20 000 bp at the 3' end.

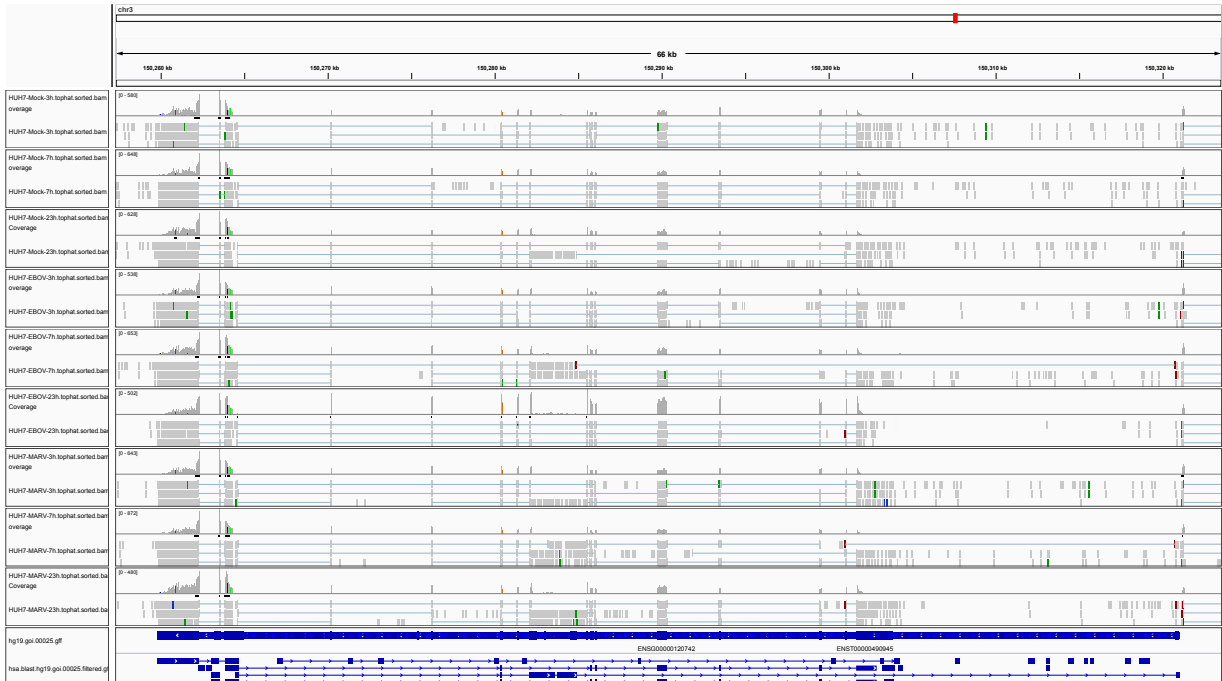


Figure 1: IGV Genome Browser screenshot of gene EIF2A.

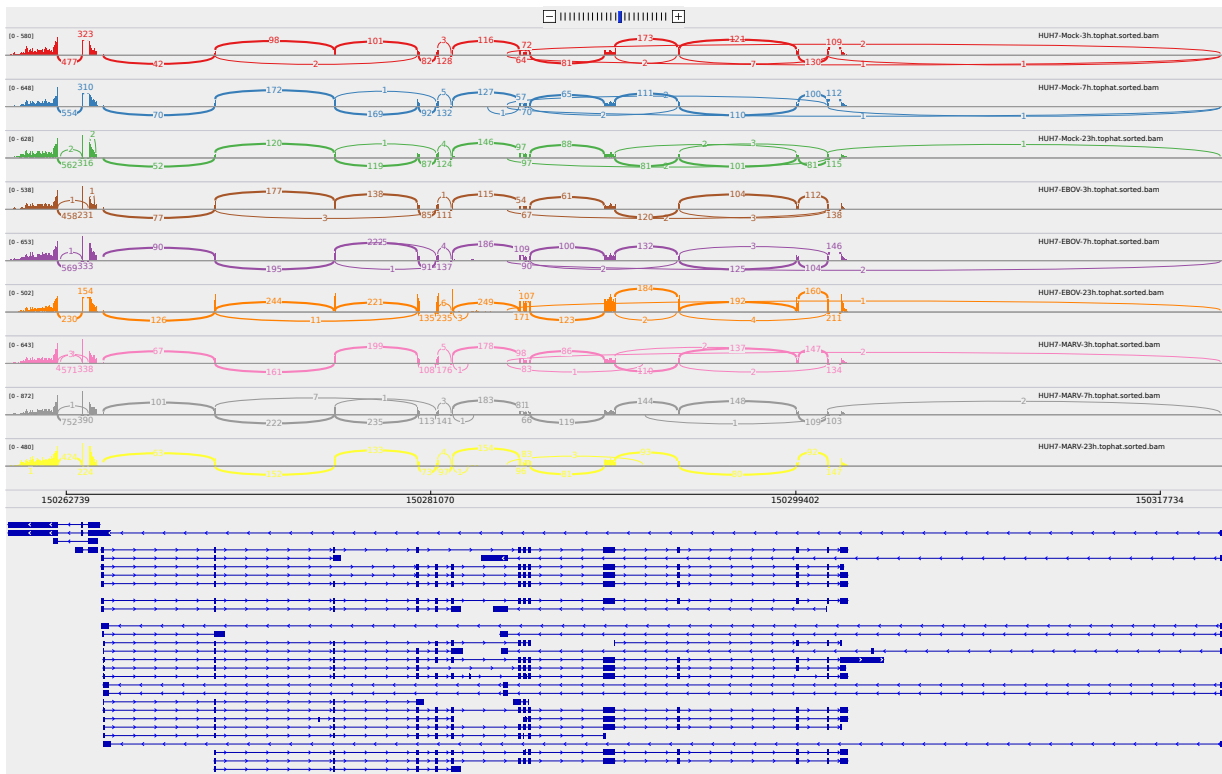


Figure 2: Sashimi plot of gene EIF2A.

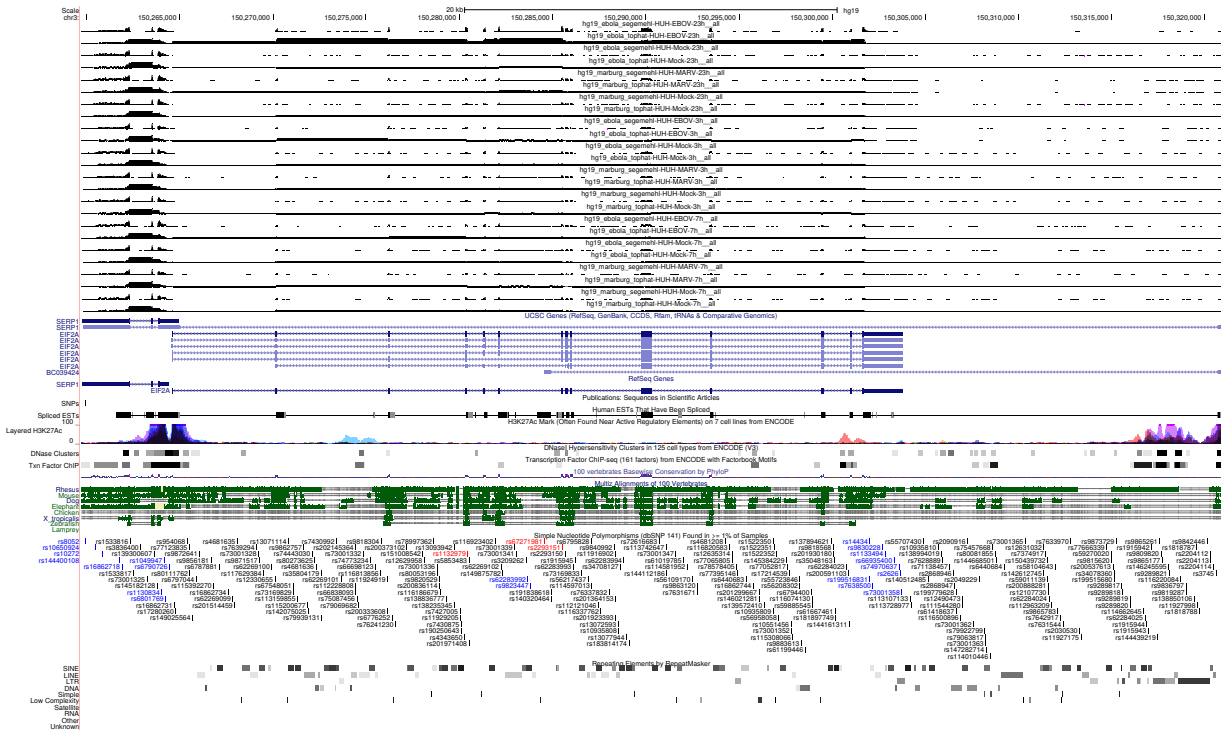


Figure 3: UCSC Genome Browser screenshot of gene EIF2A.