

1 CLDN3

Tight junctions represent one mode of cell-to-cell adhesion in epithelial or endothelial cell sheets, forming continuous seals around cells and serving as a physical barrier to prevent solutes and water from passing freely through the paracellular space. These junctions are comprised of sets of continuous networking strands in the outwardly facing cytoplasmic leaflet, with complementary grooves in the inwardly facing extracytoplasmic leaflet. The protein encoded by this intronless gene, a member of the claudin family, is an integral membrane protein and a component of tight junction strands. It is also a low-affinity receptor for *Clostridium perfringens* enterotoxin, and shares aa sequence similarity with a putative apoptosis-related protein found in rat.

Some differences but low expression level.



Figure 1: IGV Genome Browser screenshot of gene CLDN3.

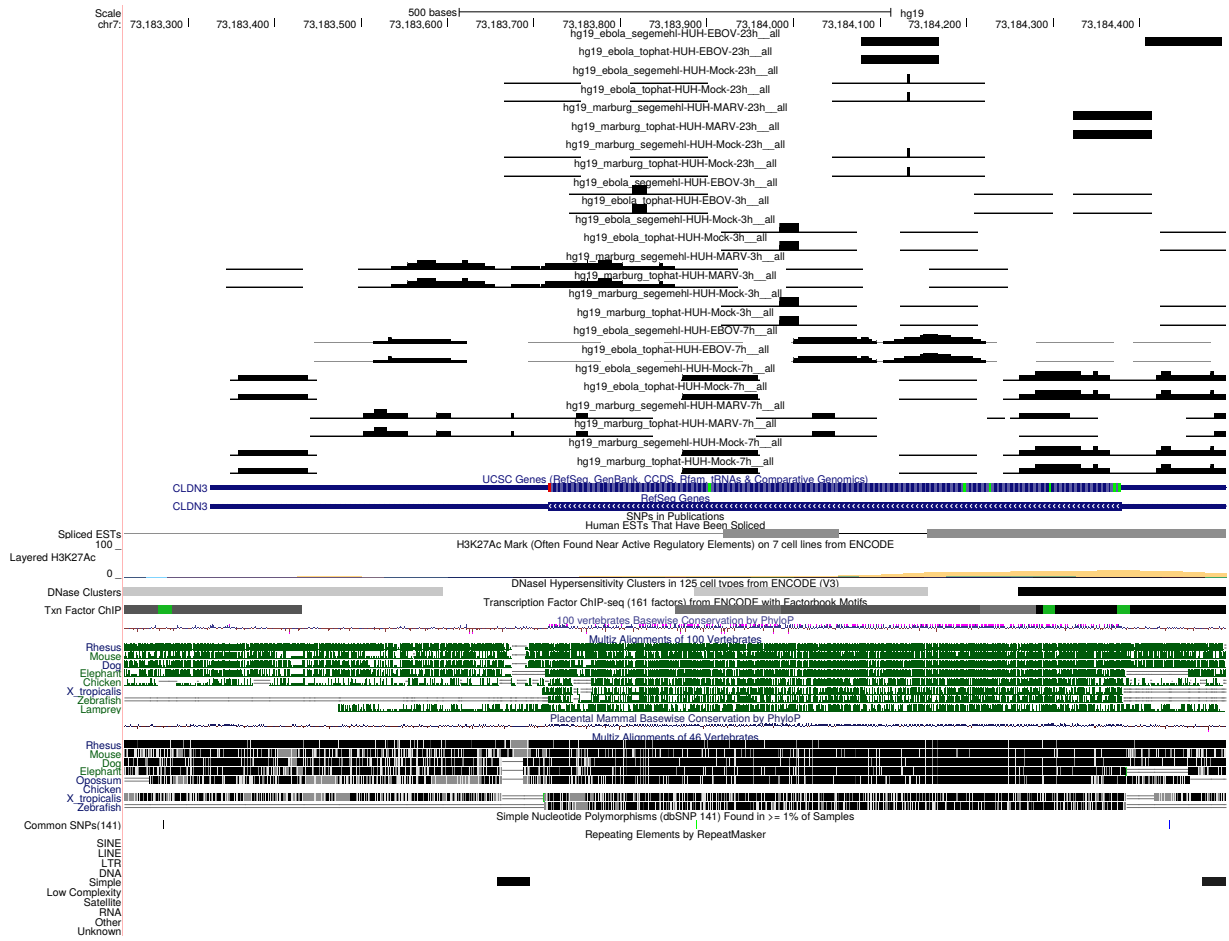


Figure 2: UCSC Genome Browser screenshot of gene CLDN3.