

1 IL1A

The protein encoded by this gene is a member of the interleukin 1 cytokine family. This cytokine is a pleiotropic cytokine involved in various immune responses, inflammatory processes, and hematopoiesis. This cytokine is produced by monocytes and macrophages as a proprotein, which is proteolytically processed and released in response to cell injury, and thus induces apoptosis. This gene and eight other interleukin 1 family genes form a cytokine gene cluster on chromosome 2. It has been suggested that the polymorphism of these genes is associated with rheumatoid arthritis and Alzheimer's disease.

The gene IL1A is very low expressed in all analyzed datasets, and shows awkward read profiles.

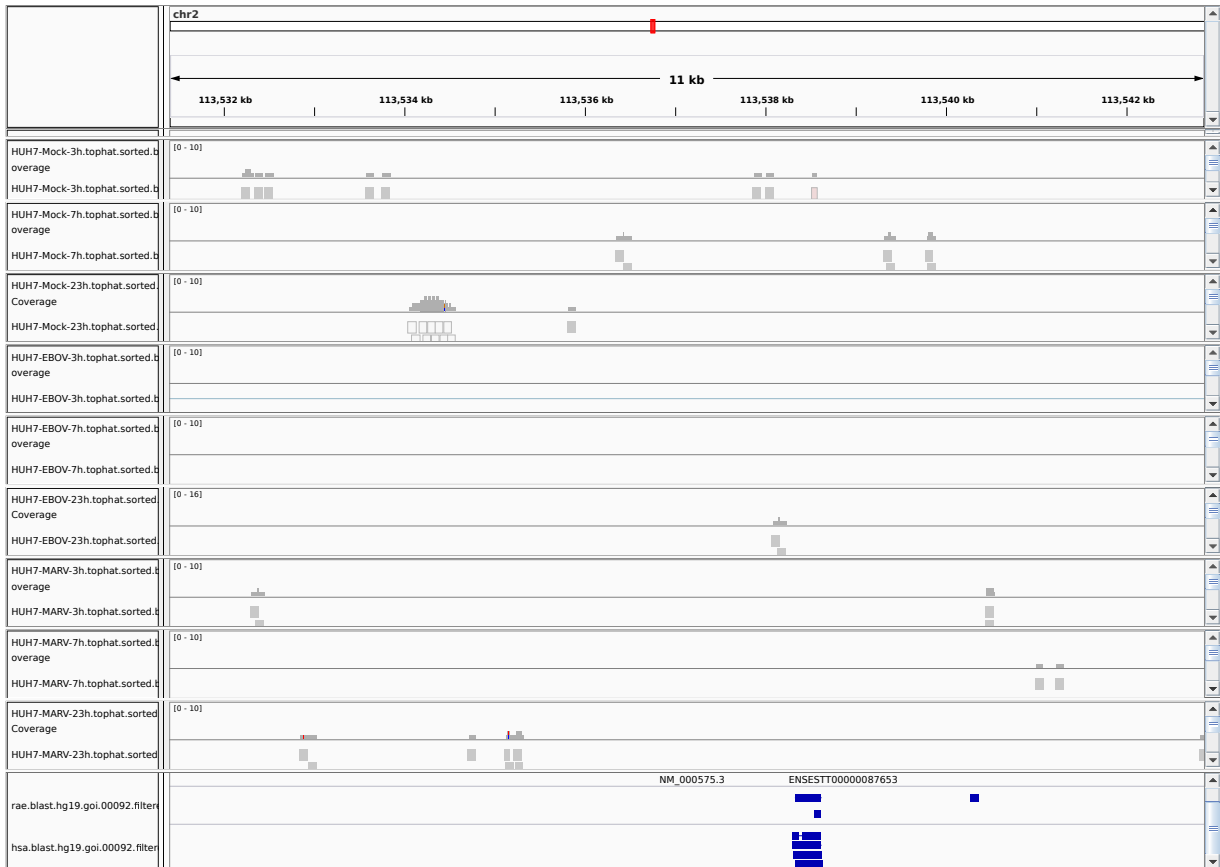


Figure 1: IGV Genome Browser screenshot of gene IL1A. Low expression, atypical read coverage.

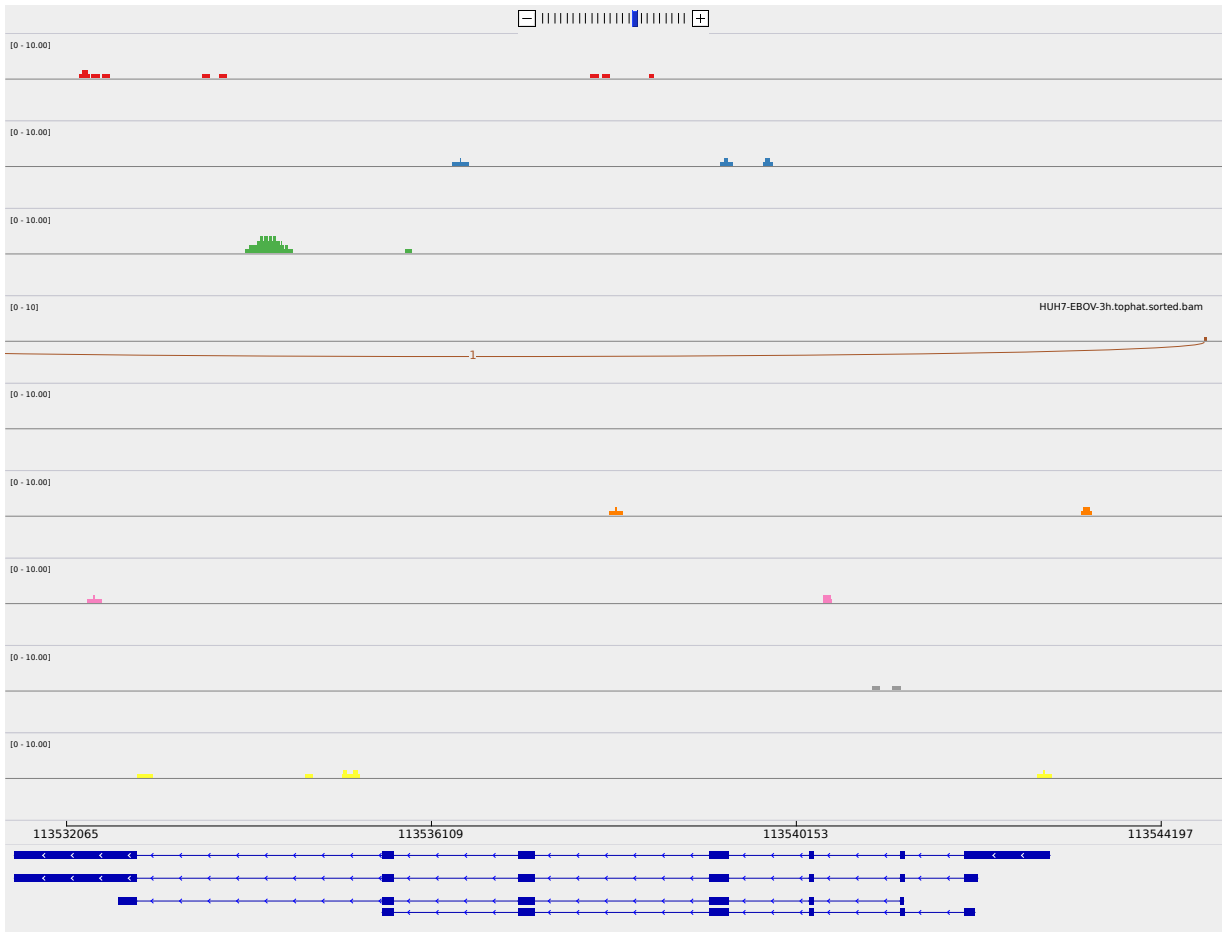


Figure 2: Sashimi plot of gene IL1A.

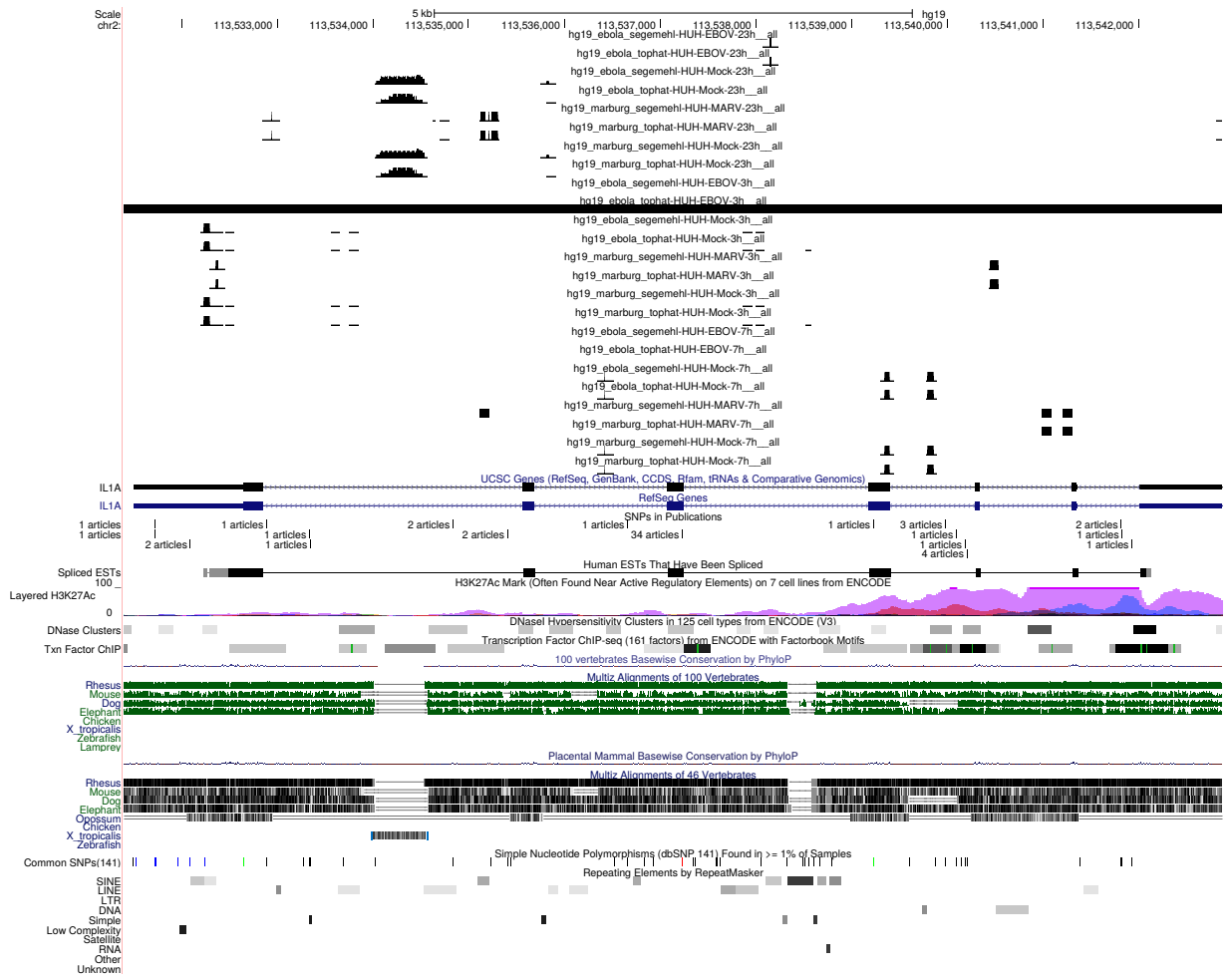


Figure 3: UCSC Genome Browser screenshot of gene IL1A. Low expression, atypical read coverage.