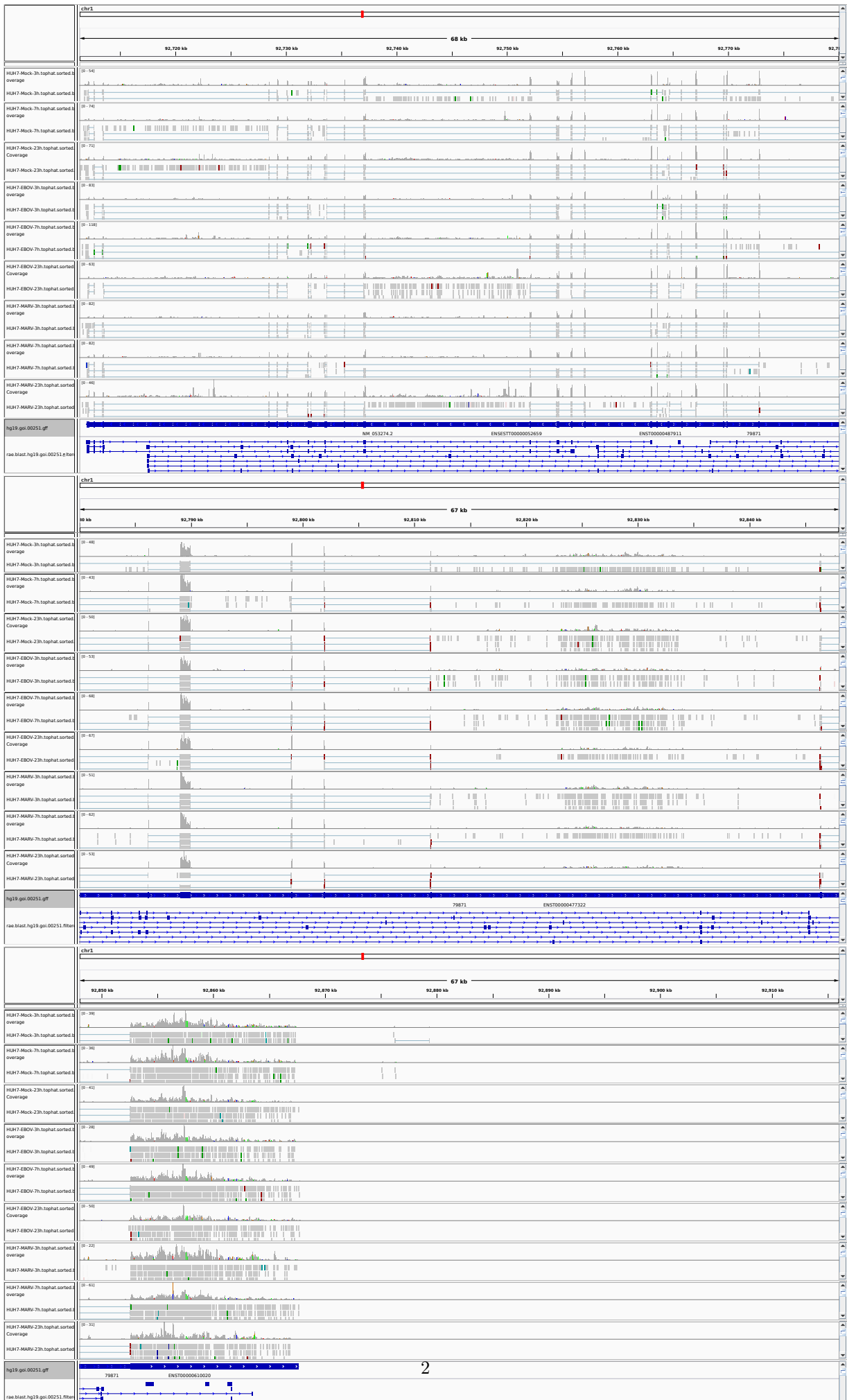


1 GLMN

This gene encodes a phosphorylated protein that is a member of a Skp1-Cullin-F-box-like complex. The protein is essential for normal development of the vasculature and mutations in this gene have been associated with glomuvenous malformations, also called glomangiomas. Alternatively spliced variants that encode different protein isoforms have been described but the full-length nature of only one has been determined.

Low expression in human but not expressed in bat.



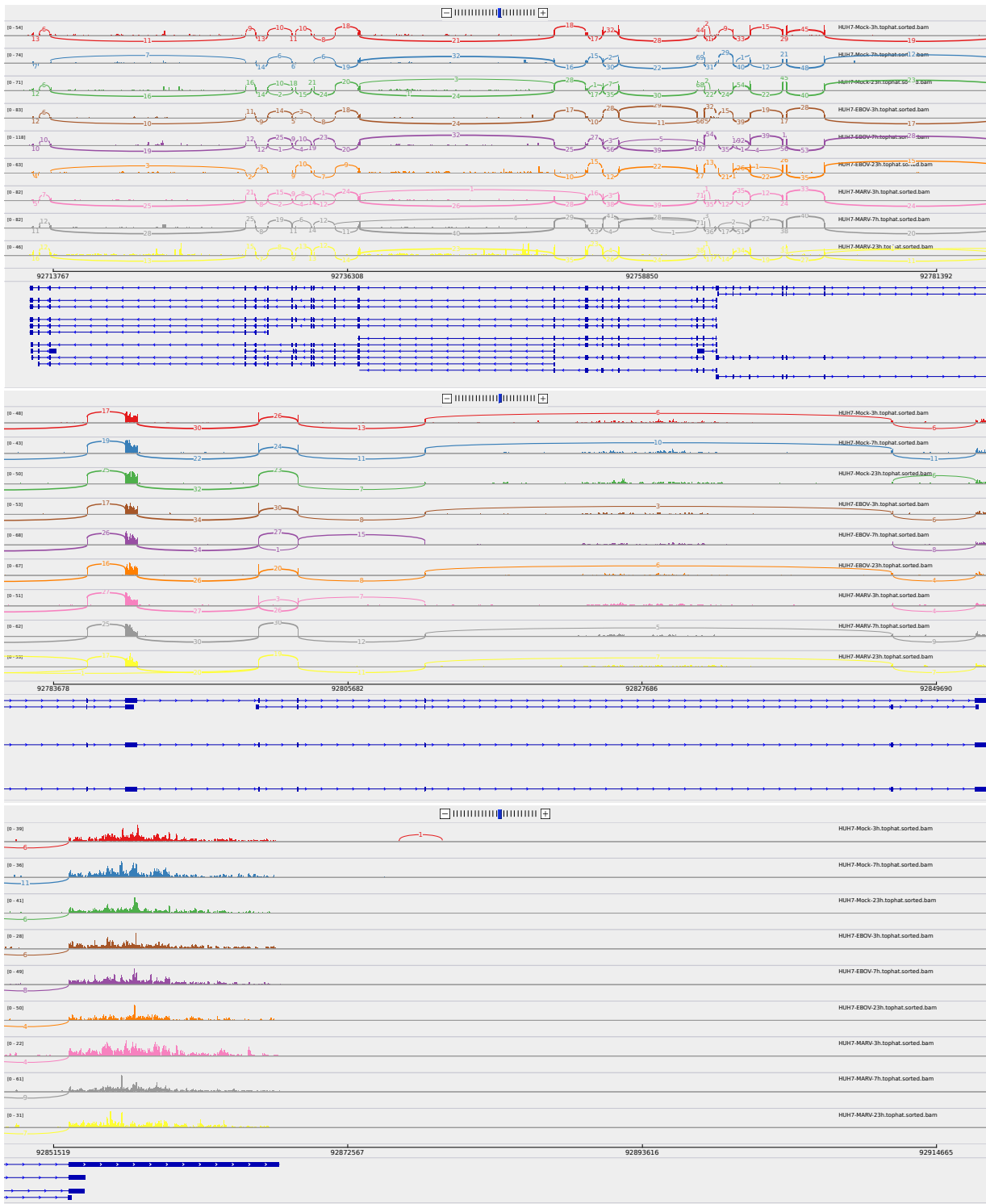


Figure 2: Sashimi plot of gene GLMN.

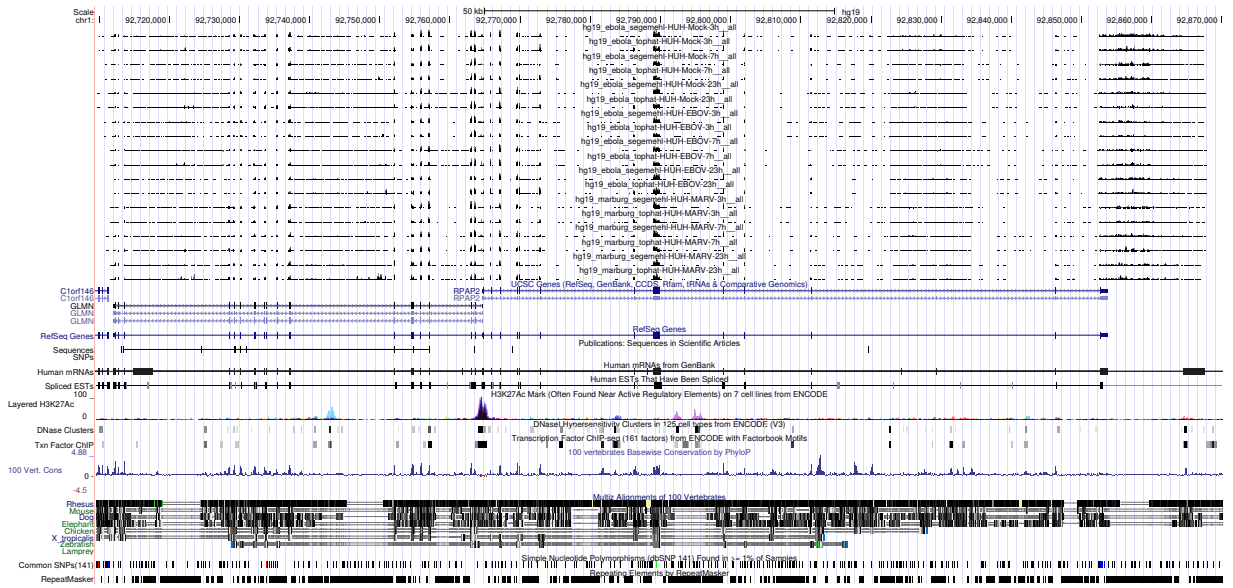


Figure 3: UCSC Genome Browser screenshot of gene *GLMN*.