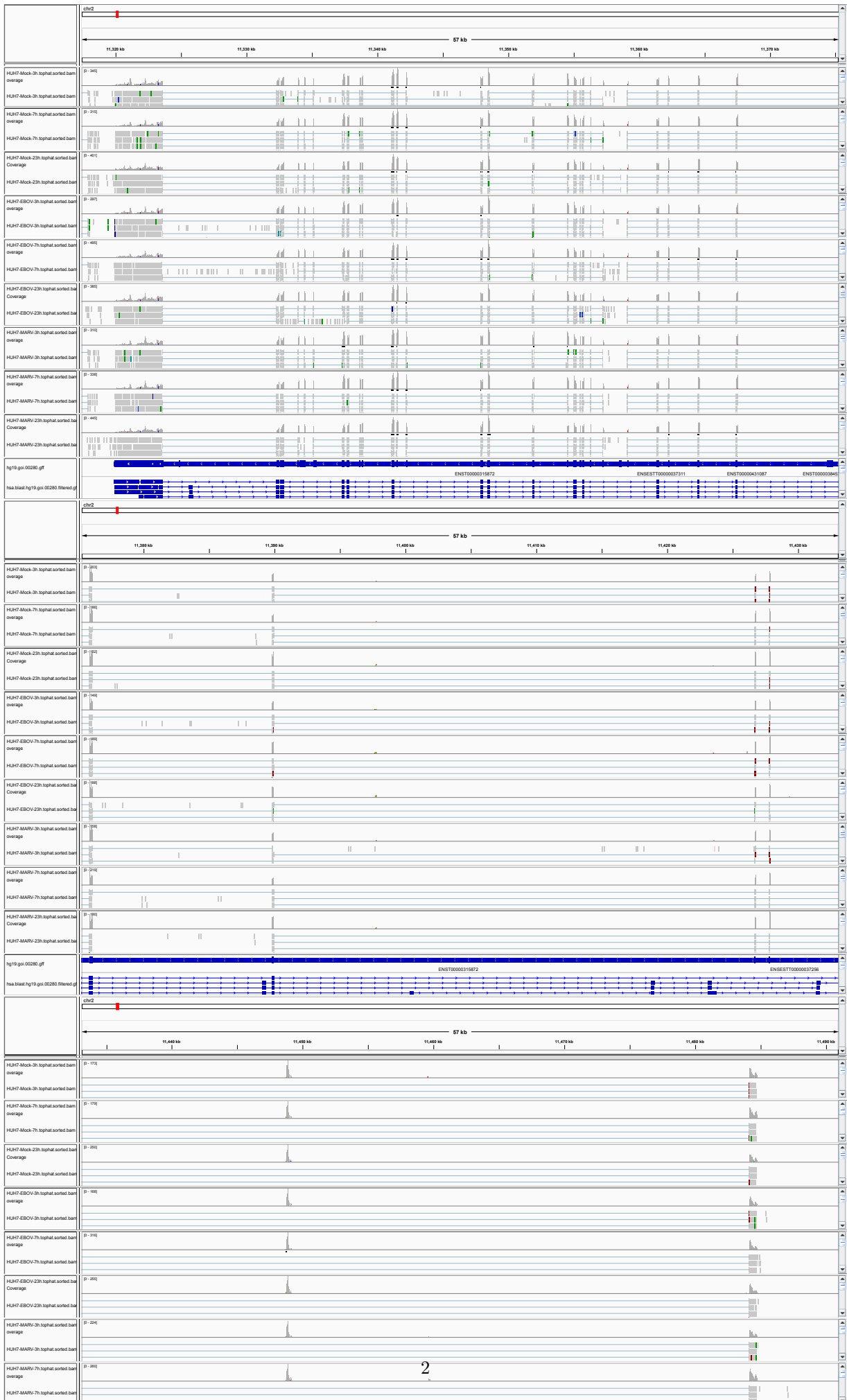


1 ROCK2

The protein encoded by this gene is a serine/threonine kinase that regulates cytokinesis, smooth muscle contraction, the formation of actin stress fibers and focal adhesions, and the activation of the c-fos serum response element. This protein, which is an isozyme of ROCK1 is a target for the small GTPase Rho.

Well expressed in both human and bat homolog. No significant differences identified.



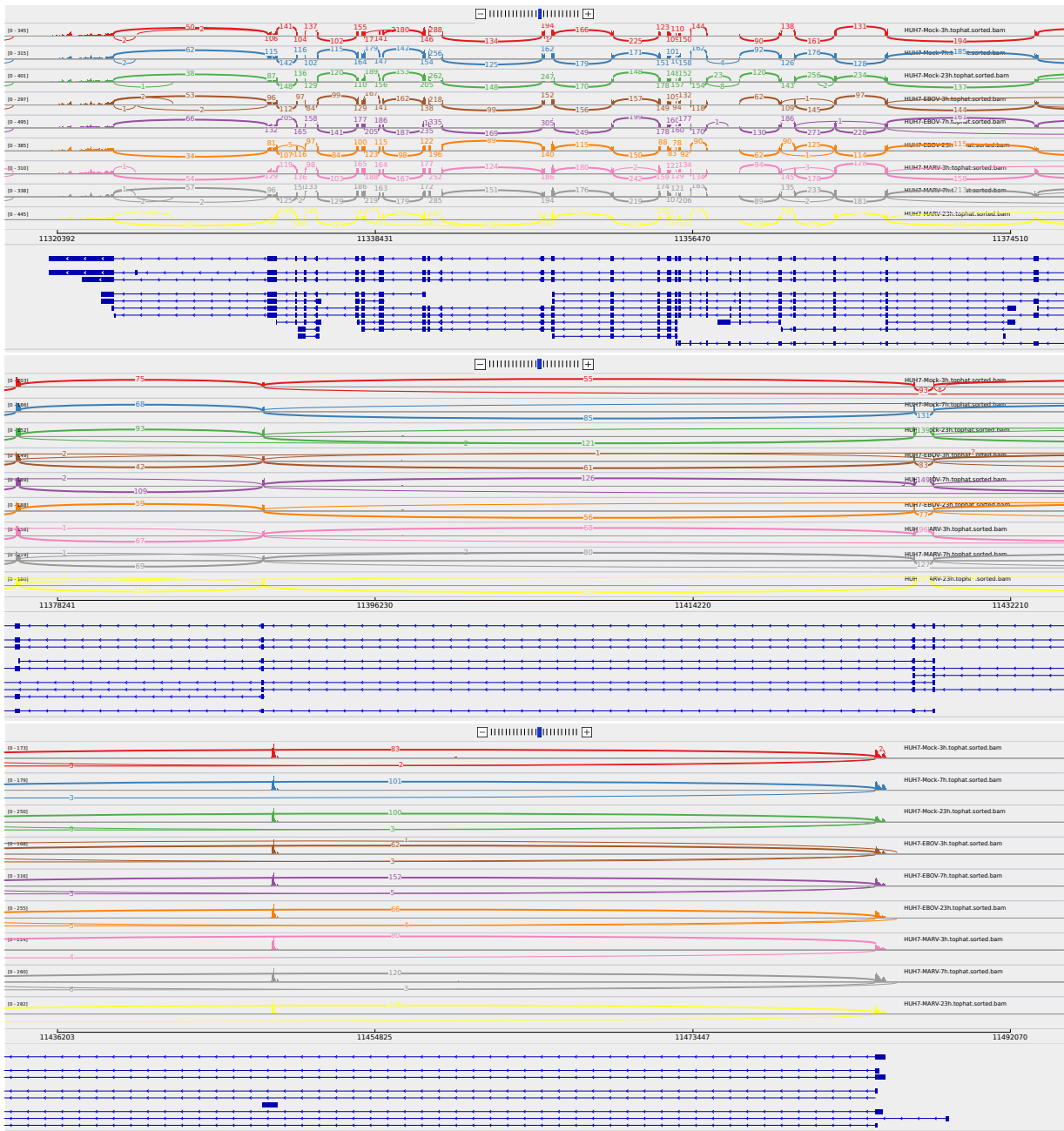


Figure 2: Sashimi plot of gene ROCK2.

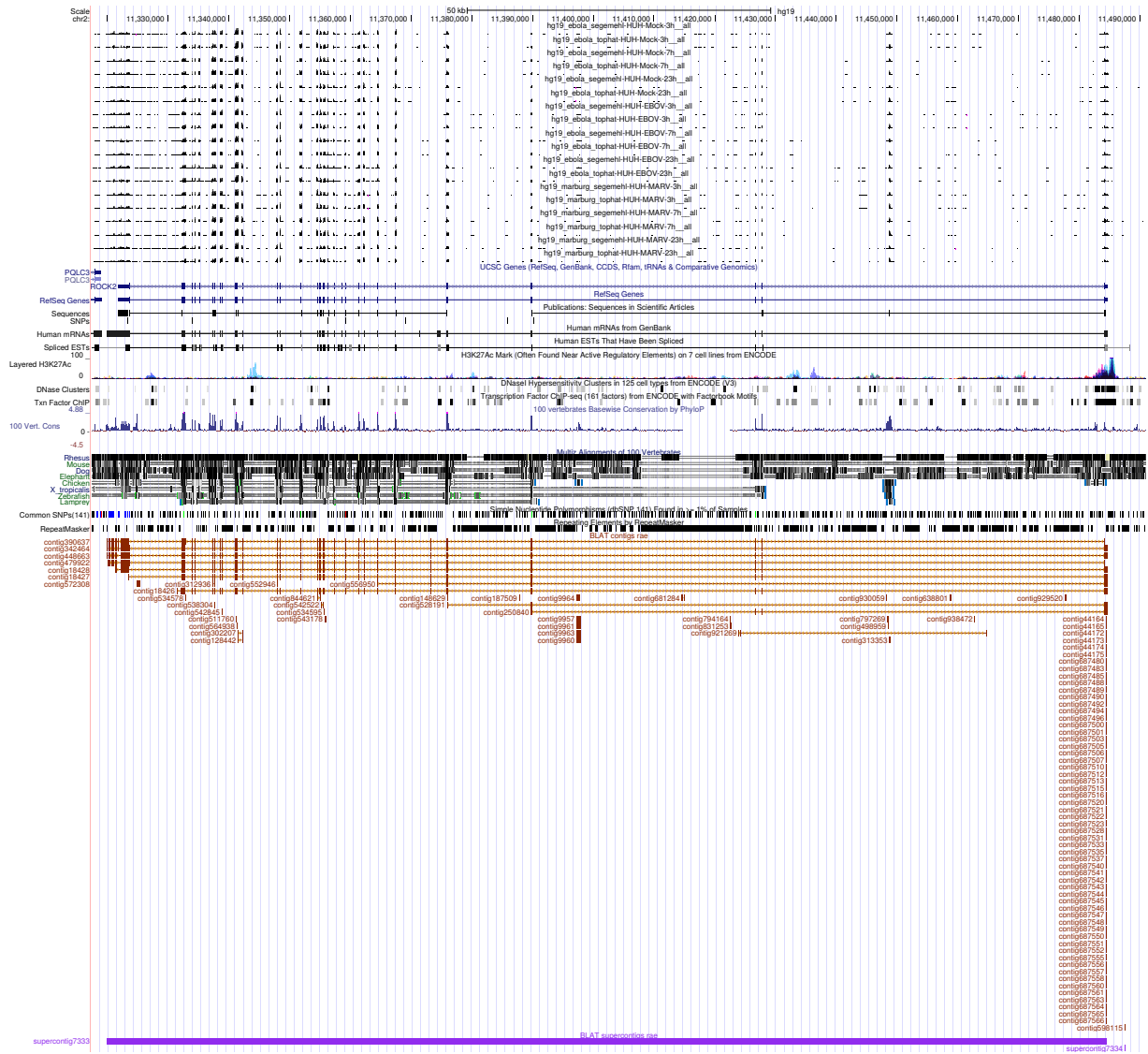


Figure 3: UCSC Genome Browser screenshot of gene ROCK2.