

1 KDR

The kinase insert domain receptor (a type III receptor tyrosine kinase) (EC:2.7.10.1) is involved in the Ras, Rap1, PI3K-Akt and VEGF signaling pathways, Cytokine-cytokine receptor interaction, Endocytosis, Focal adhesion, Proteoglycans in cancer.

It does not present any particularly interesting differential expression pattern in the analyzed samples.

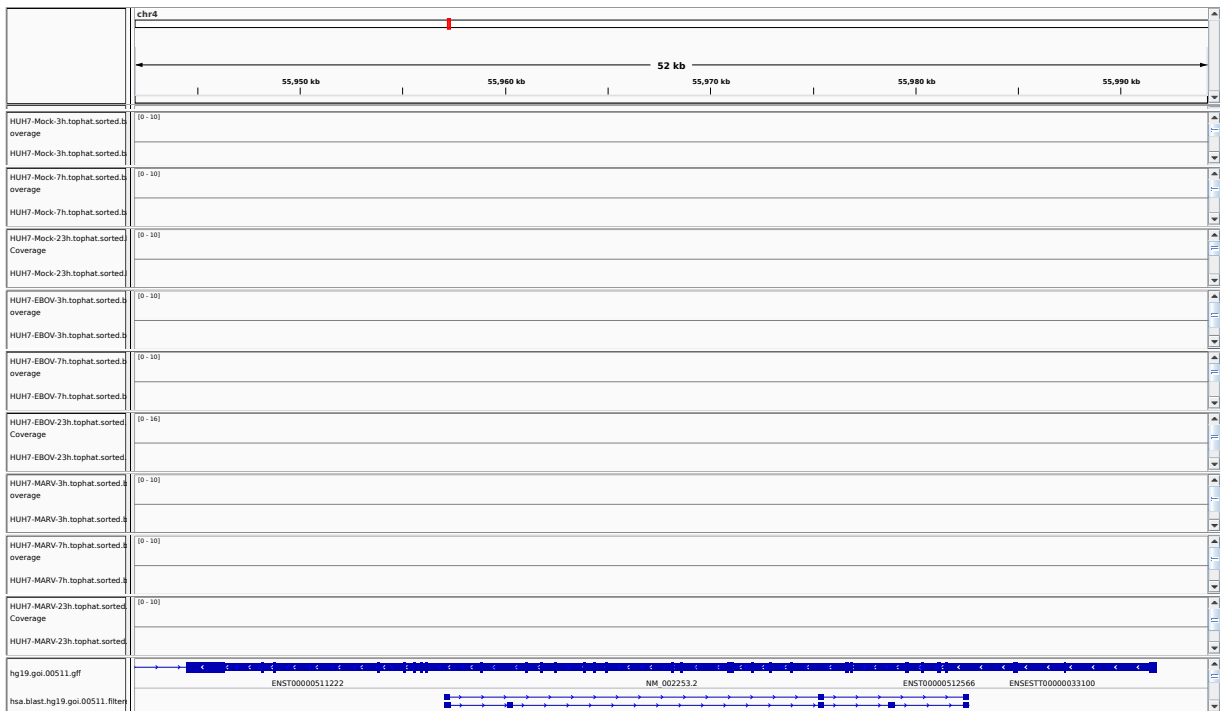


Figure 1: IGV Genome Browser screenshot of gene KDR.

Figure 2: Sashimi plot of gene KDR.

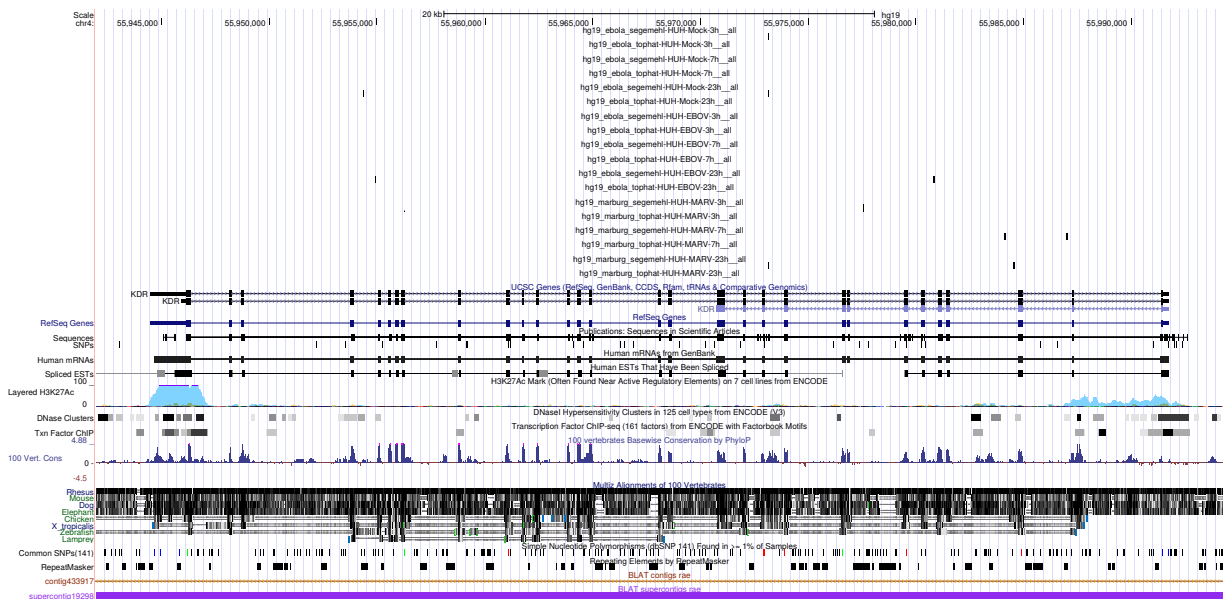


Figure 3: UCSC Genome Browser screenshot of gene KDR.