

1 RAP1B

This gene encodes a member of the RAS-like small GTP-binding protein superfamily. Members of this family regulate multiple cellular processes including cell adhesion and growth and differentiation. This protein localizes to cellular membranes and has been shown to regulate integrin-mediated cell signaling. This protein also plays a role in regulating outside-in signaling in platelets. Alternate splicing results in multiple transcript variants.

No pronounced modulation seen in bat or human cell lines.

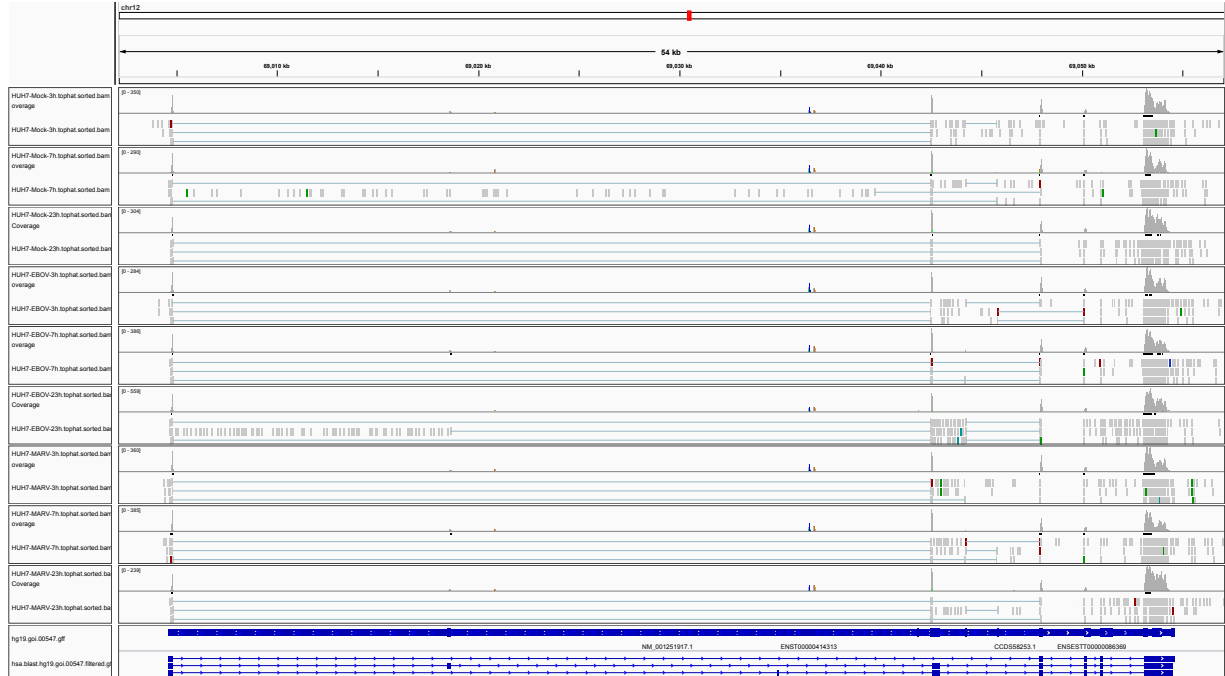


Figure 1: IGV Genome Browser screenshot of gene RAP1B.

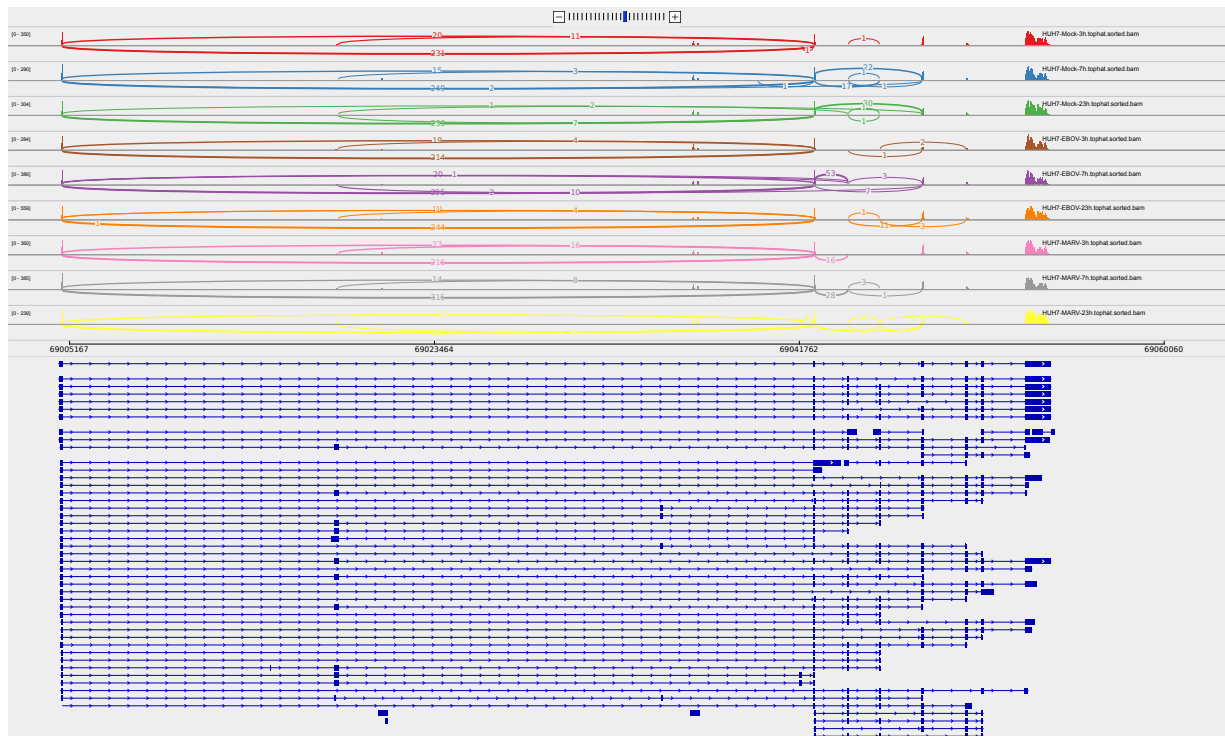


Figure 2: Sashimi plot of gene RAP1B.

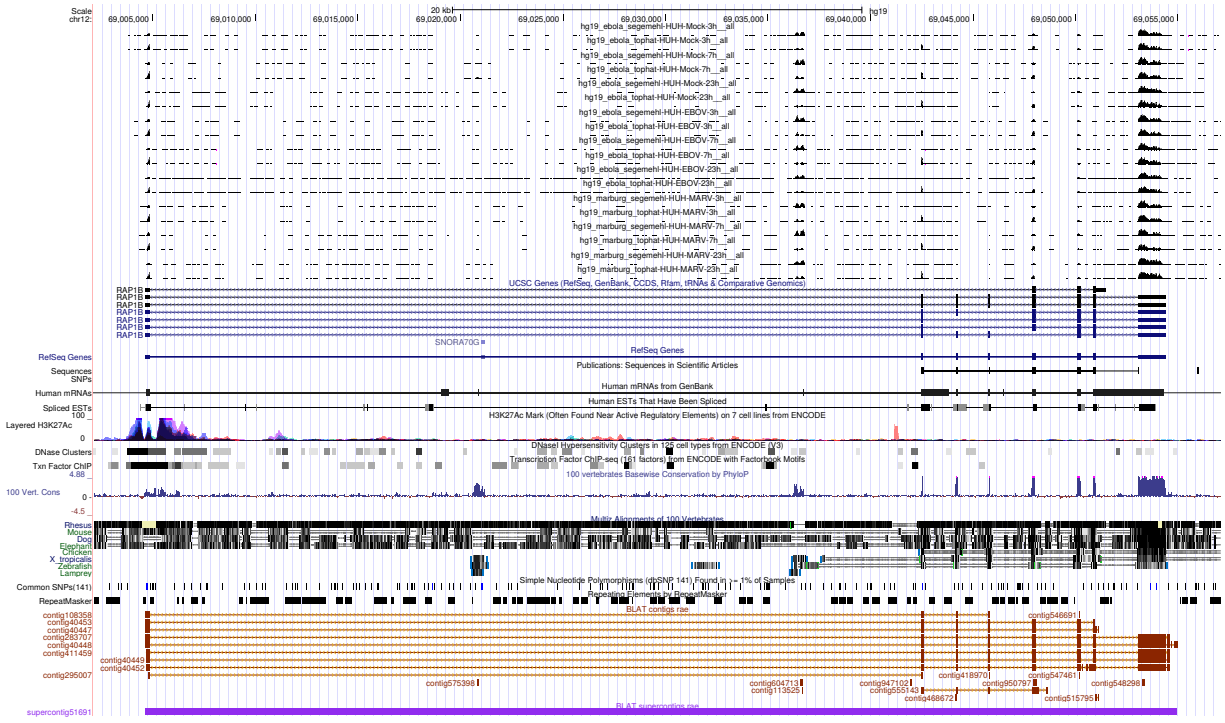


Figure 3: UCSC Genome Browser screenshot of gene RAP1B.