

# 1 MAPK8IP3

The protein encoded by this gene shares similarity with the product of *Drosophila* *syd* gene, required for the functional interaction of kinesin I with axonal cargo. Studies of the similar gene in mouse suggested that this protein may interact with, and regulate the activity of numerous protein kinases of the JNK signaling pathway, and thus function as a scaffold protein in neuronal cells.

Although the expression pattern is unremarkable in Ebola and Marburg virus infection, interestingly, the putative bat homologous gene shows a pronounced possible editing at its 3' end

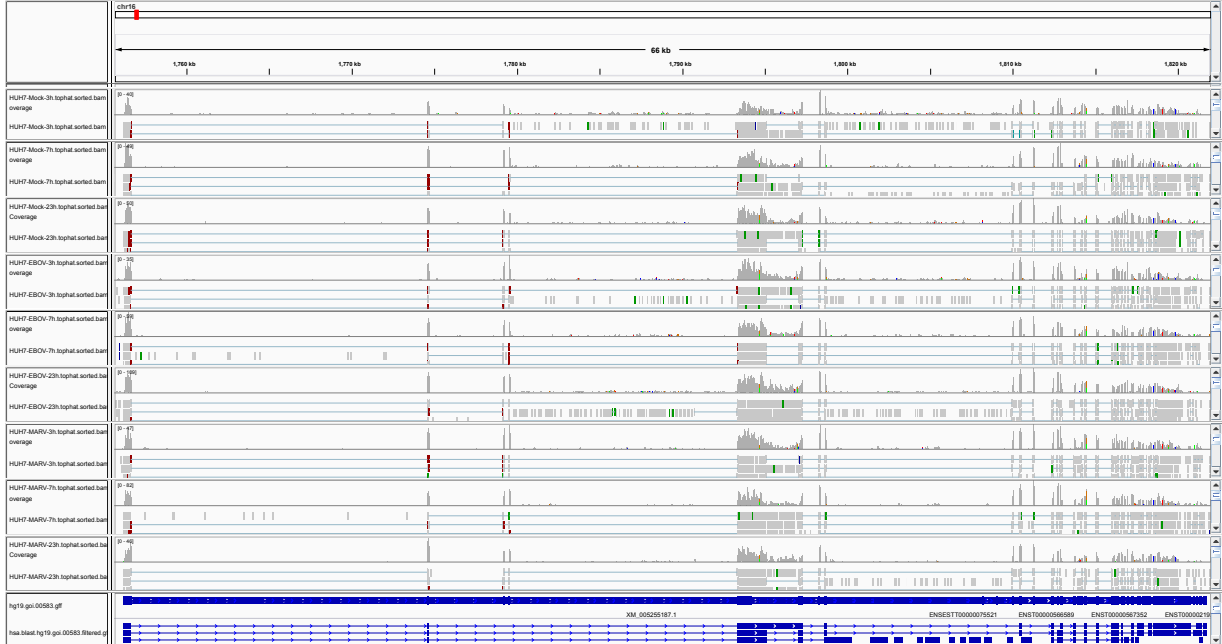


Figure 1: IGV Genome Browser screenshot of gene MAPK8IP3.

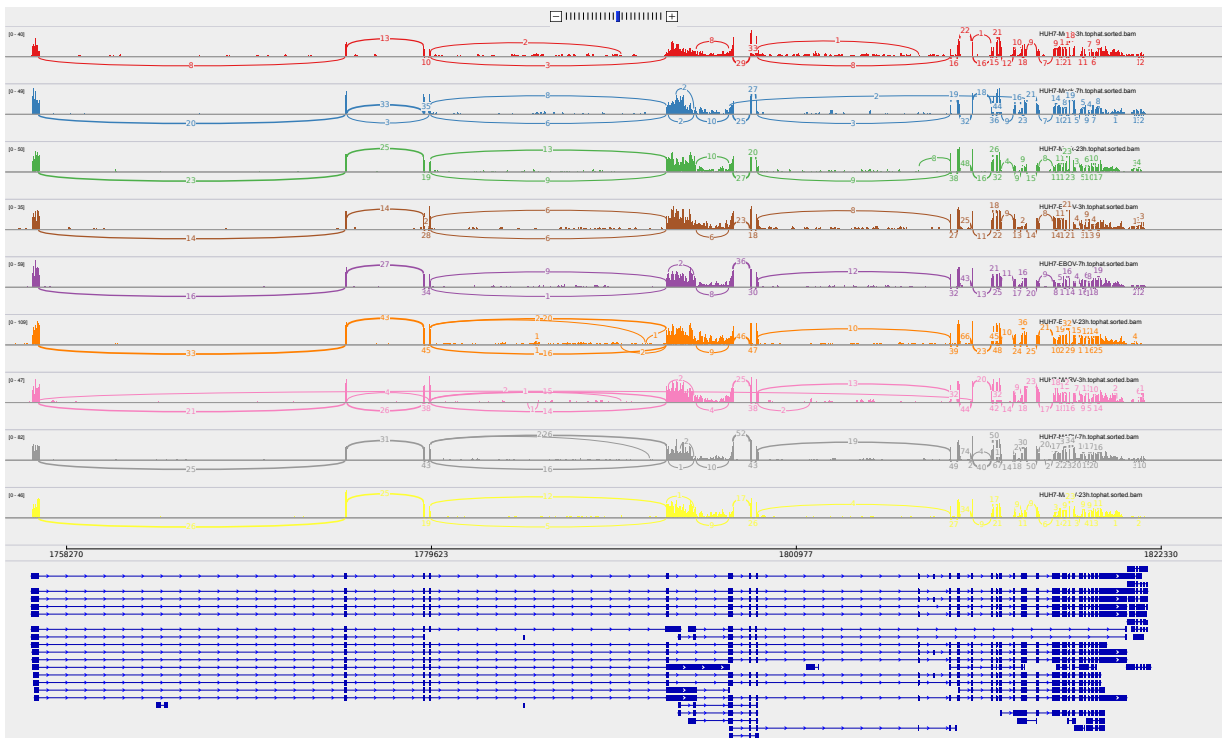


Figure 2: Sashimi plot of gene MAPK8IP3.

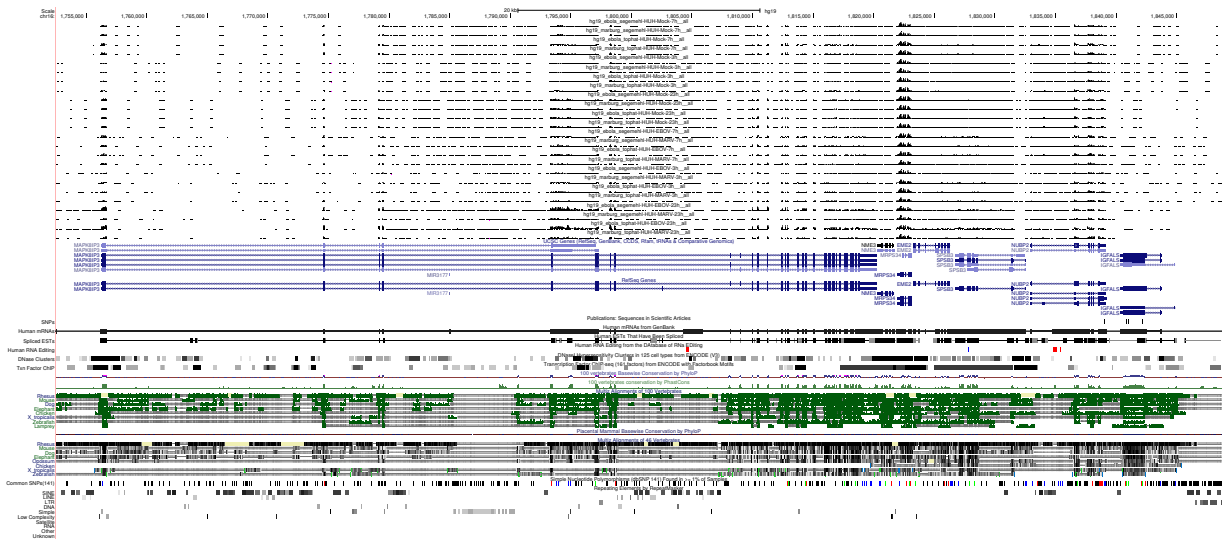


Figure 3: UCSC Genome Browser screenshot of gene MAPK8IP3.