

# 1 TGFB3

This gene encodes a member of the TGF-beta family of proteins. The encoded protein is secreted and is involved in embryogenesis and cell differentiation. Defects in this gene are a cause of familial arrhythmogenic right ventricular dysplasia 1.

The gene is very lowly but stably expressed in human. The bat homolog is morw highly expressed and shows downregulation in Ebola after 23 h and upregulation in Marburg after 23 h.

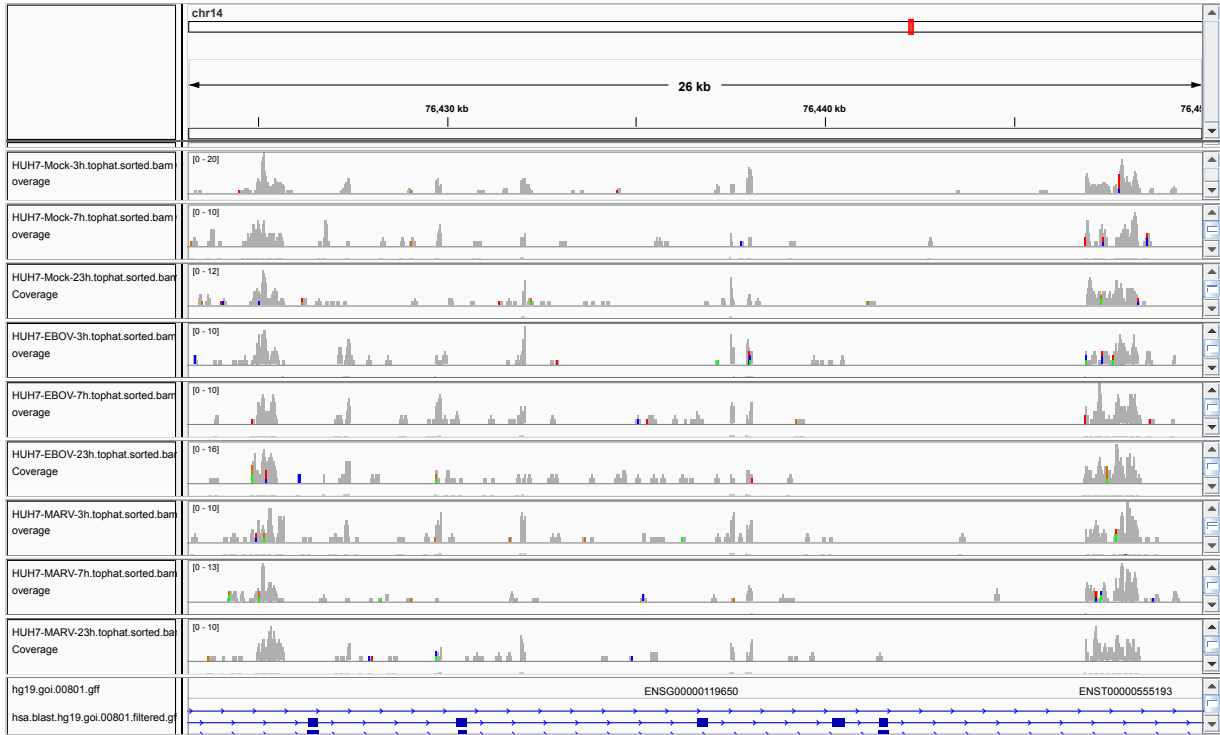


Figure 1: IGV Genome Browser screenshot of gene TGFB3.

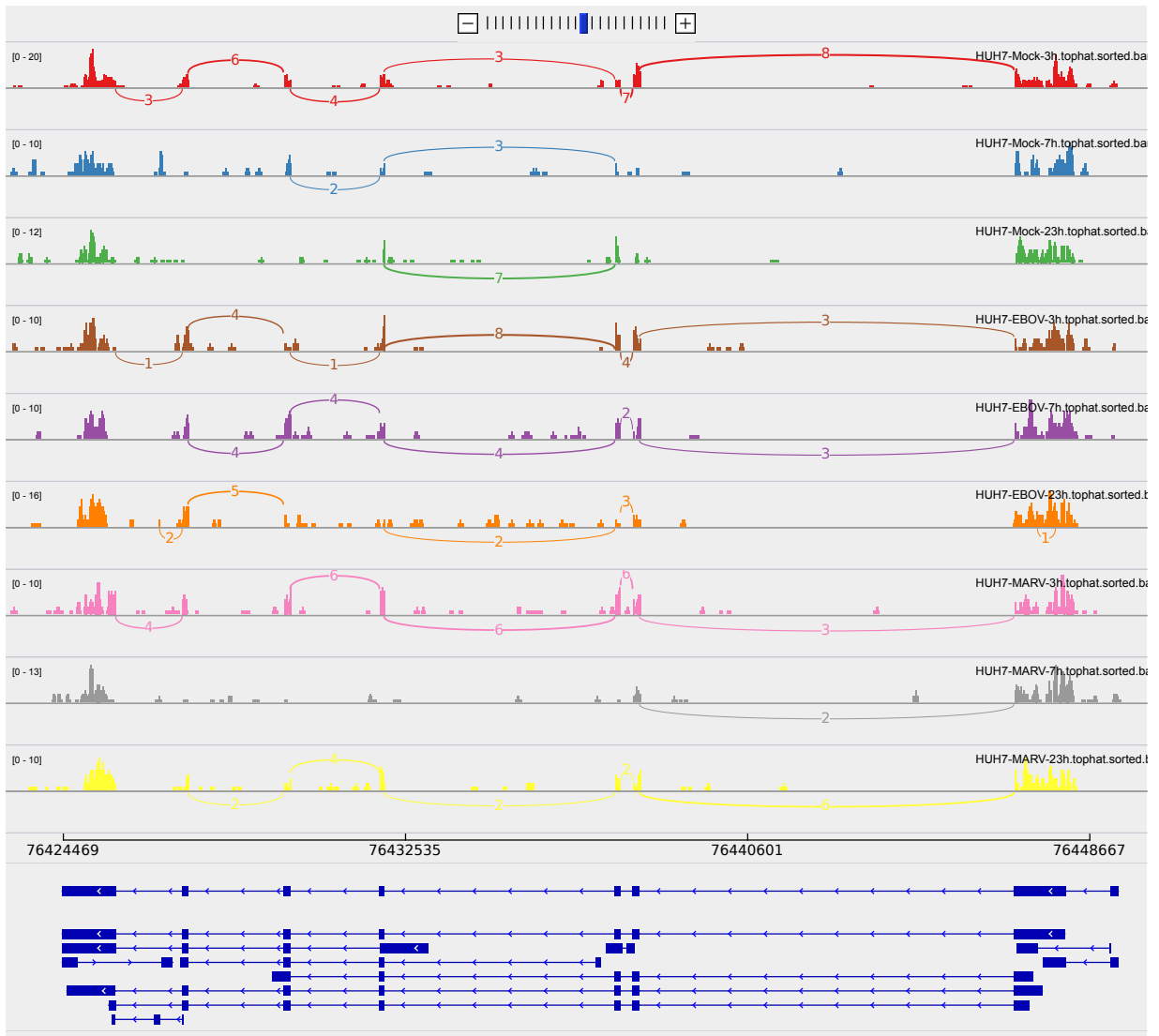


Figure 2: Sashimi plot of gene *TGFB3*.

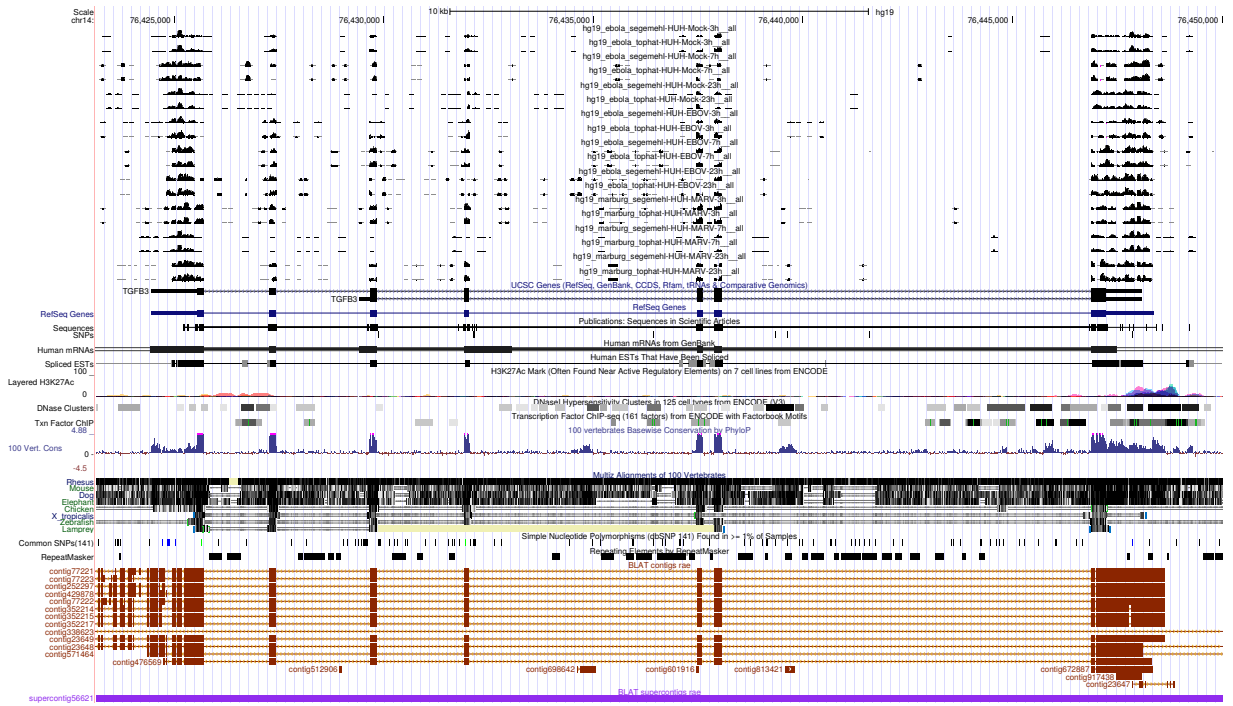


Figure 3: UCSC Genome Browser screenshot of gene *TGFB3*.