

1 RPS6KA4

This gene encodes a member of the RSK (ribosomal S6 kinase) family of serine/threonine kinases. This kinase contains 2 non-identical kinase catalytic domains and phosphorylates various substrates, including CREB1 and c-fos. Alternate transcriptional splice variants of this gene have been observed but have not been thoroughly characterized.

The gene RPS6KA4 is weakly expressed throughout human and bat datasets without significant changes in expression levels.

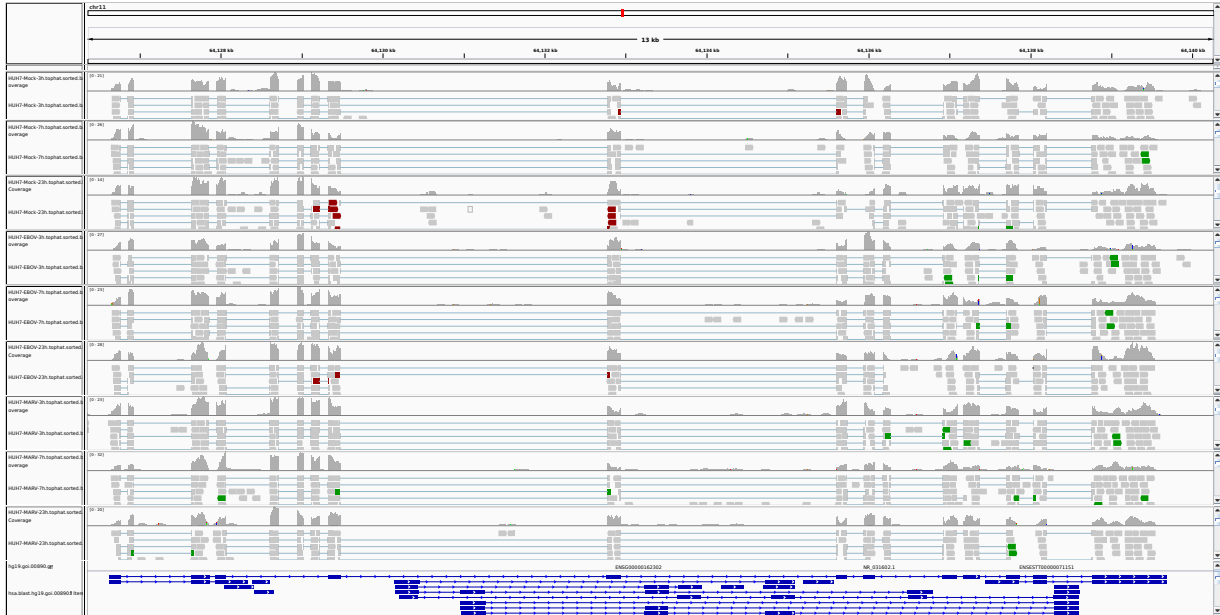


Figure 1: IGV Genome Browser screenshot of gene RPS6KA4.

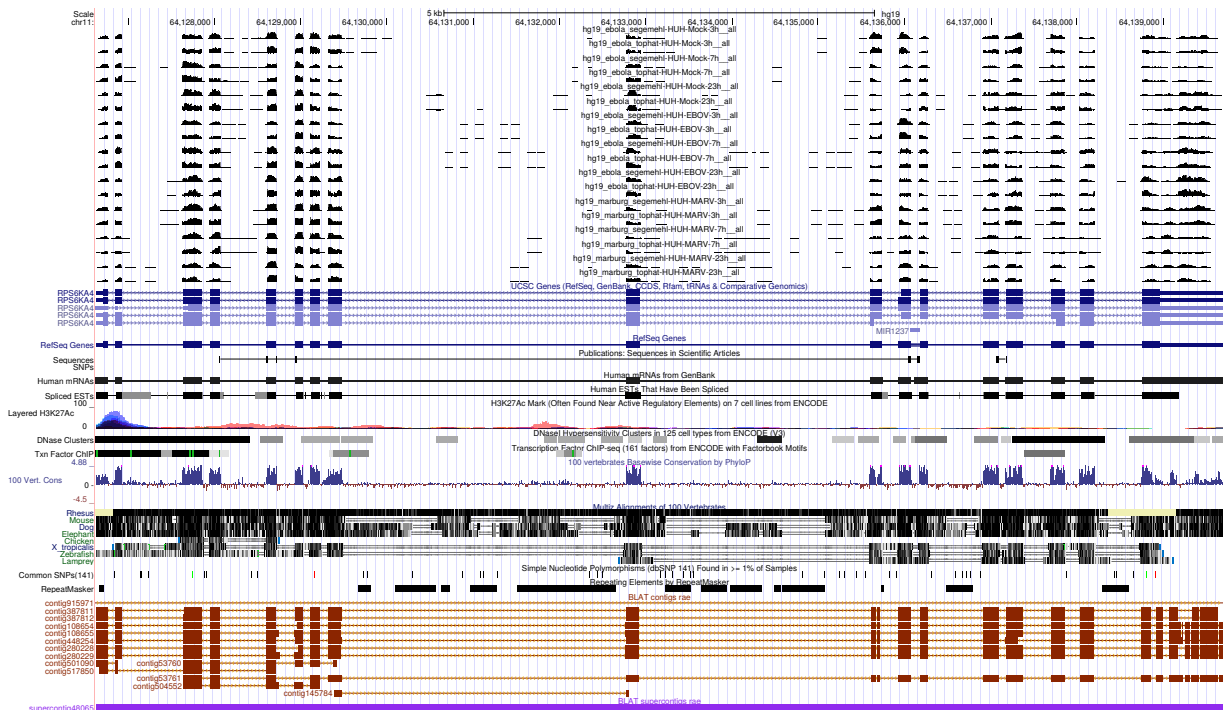


Figure 2: UCSC Genome Browser screenshot of gene RPS6KA4.