

1 SMAD3

The protein encoded by this gene belongs to the SMAD, a family of proteins similar to the gene products of the *Drosophila* gene ‘mothers against decapentaplegic’ (Mad) and the *C. elegans* gene Sma. SMAD proteins are signal transducers and transcriptional modulators that mediate multiple signaling pathways. This protein functions as a transcriptional modulator activated by transforming growth factor-beta and is thought to play a role in the regulation of carcinogenesis.

It is constantly expressed in human and bat.

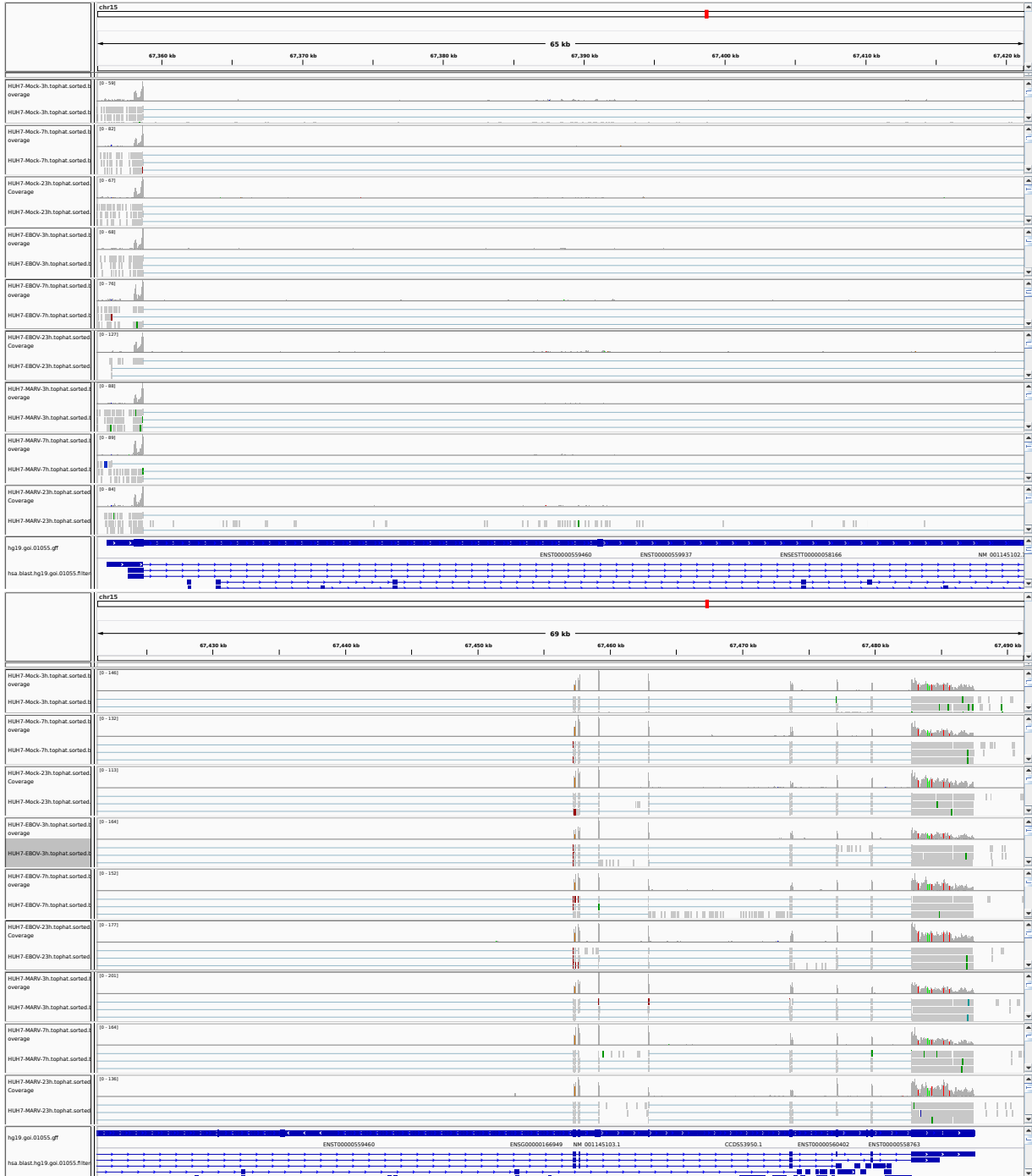


Figure 1: IGV Genome Browser screenshot of gene SMAD3.

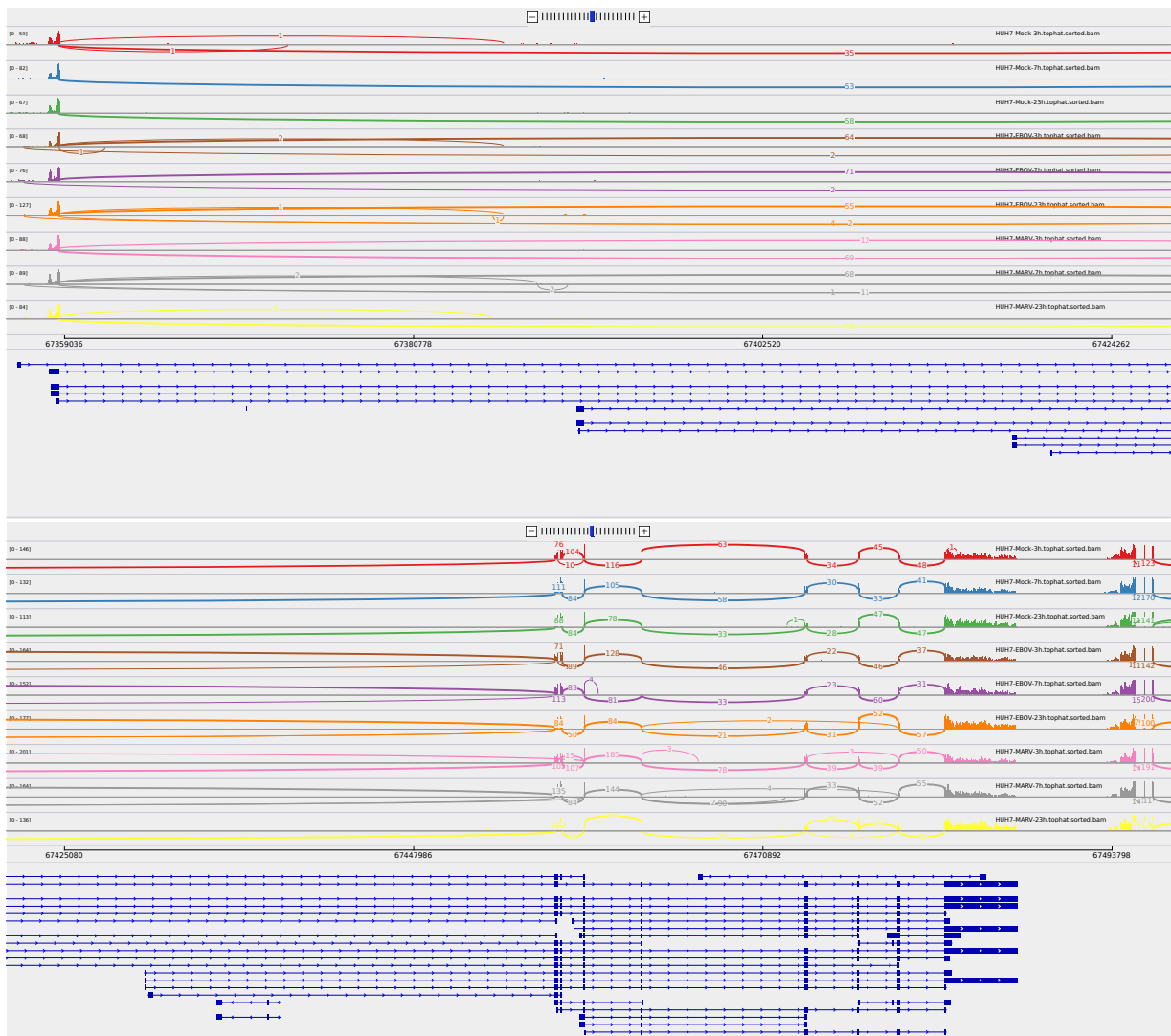


Figure 2: Sashimi plot of gene SMAD3.

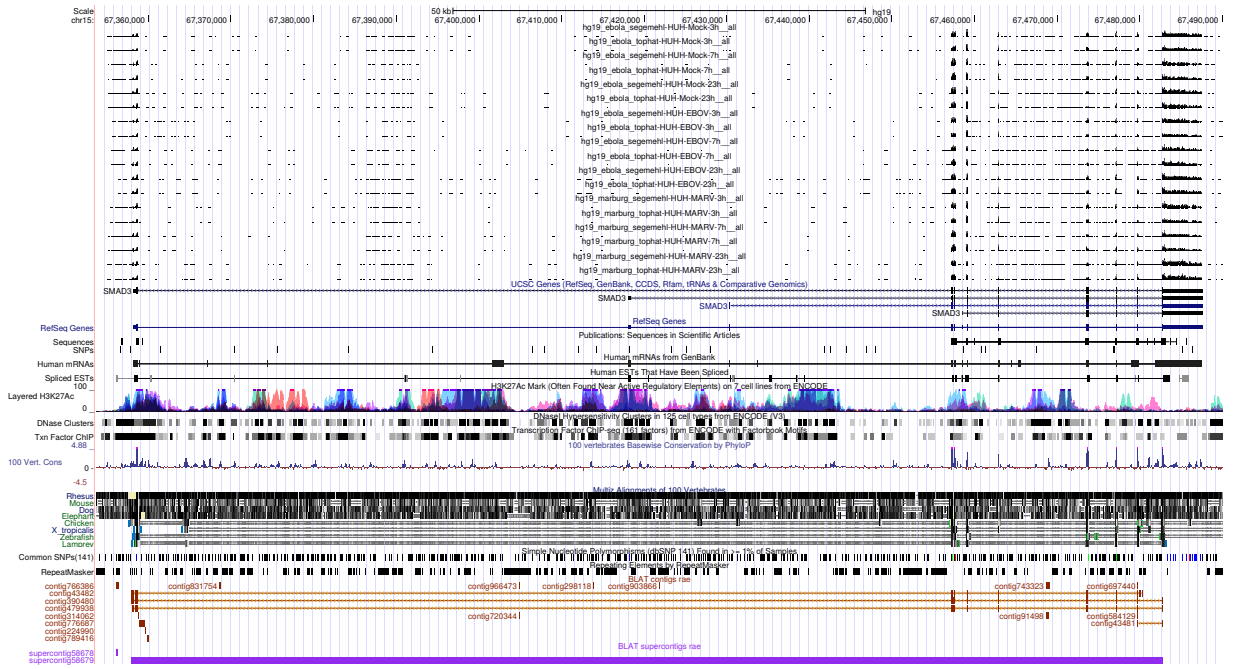


Figure 3: UCSC Genome Browser screenshot of gene SMAD3.