

# 1 ITGA4

The product of this gene belongs to the integrin alpha chain family of proteins. Integrins are heterodimeric integral membrane proteins composed of an alpha chain and a beta chain. This gene encodes an alpha 4 chain. Unlike other integrin alpha chains, alpha 4 neither contains an I-domain, nor undergoes disulfide-linked cleavage. Alpha 4 chain associates with either beta 1 chain or beta 7 chain.

ITGA4 is not expressed in human cells, in nor condition. No homolog in bat could be found.

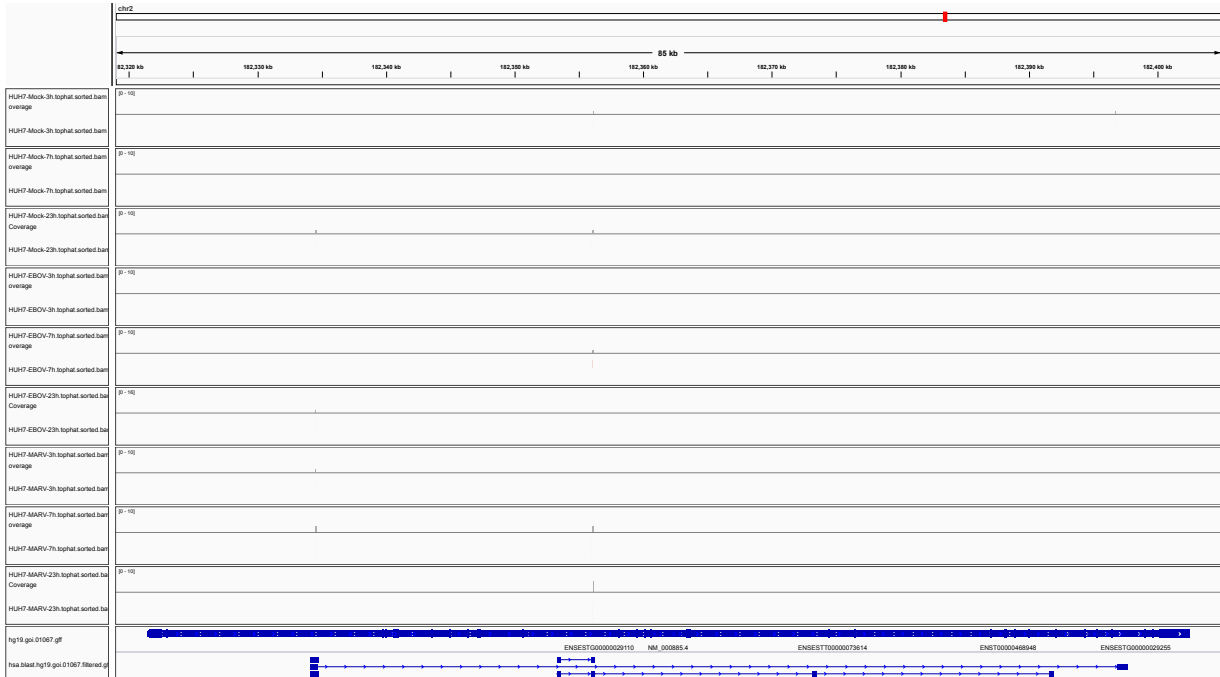


Figure 1: IGV Genome Browser screenshot of gene ITGA4.

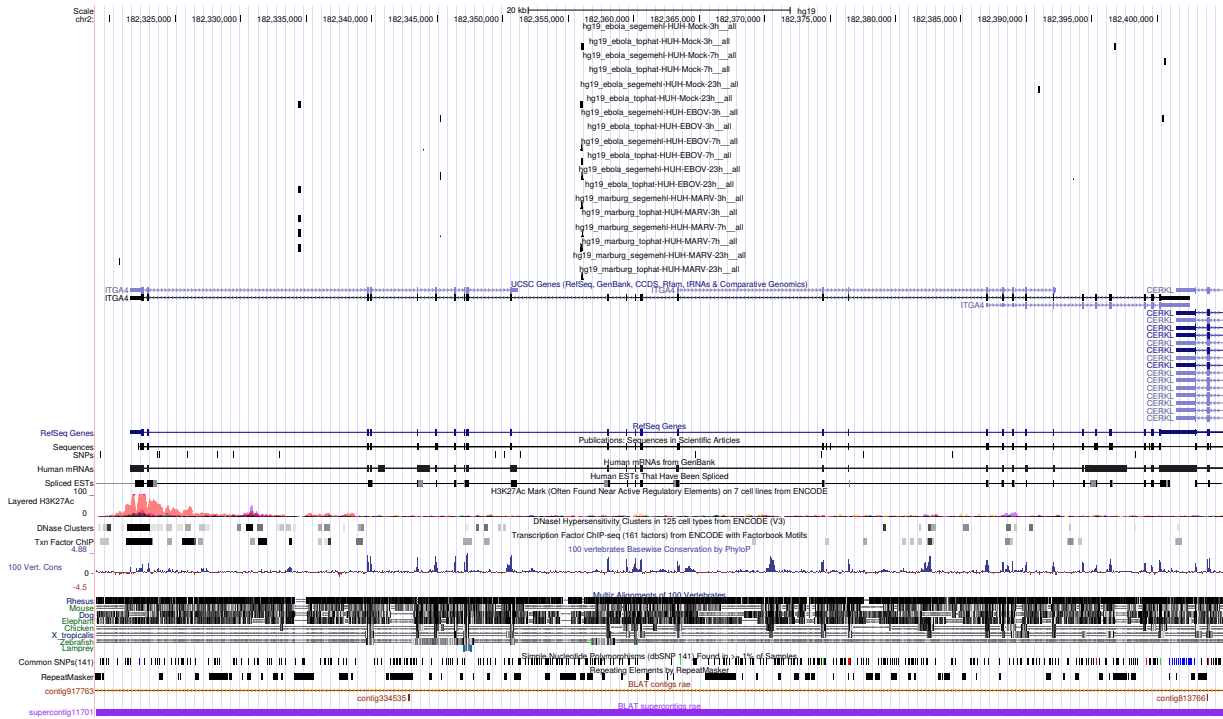


Figure 2: UCSC Genome Browser screenshot of gene ITGA4.